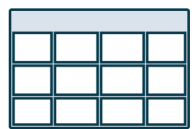
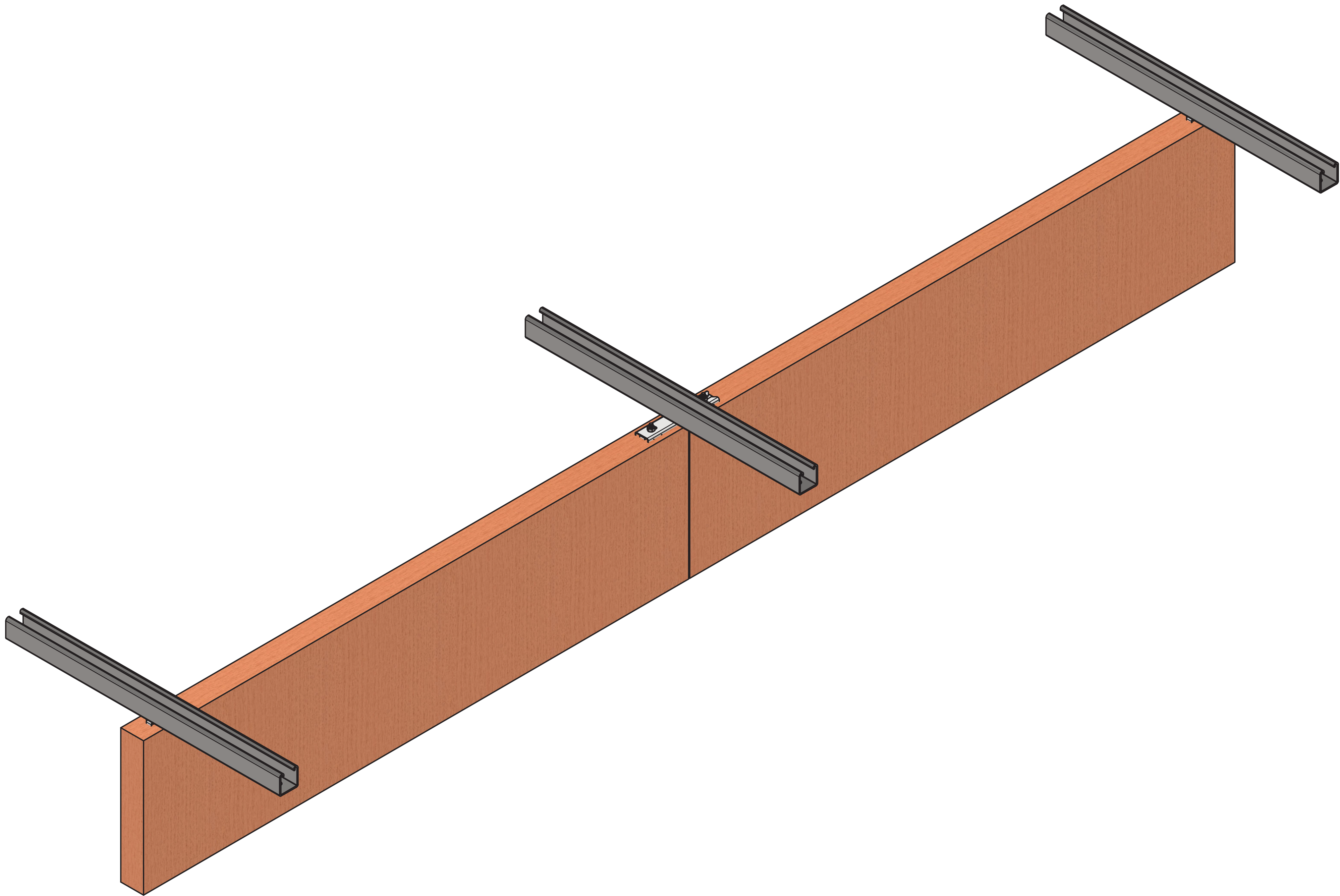


Direct Mount Baffle Attachments

SoundPly® and Rensa™ Acoustic Lighting

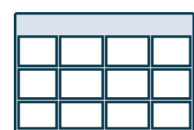


**NAVY
ISLAND**



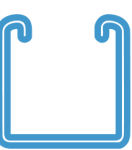
Baffle Options

Page 1



Hardware List

Page 2

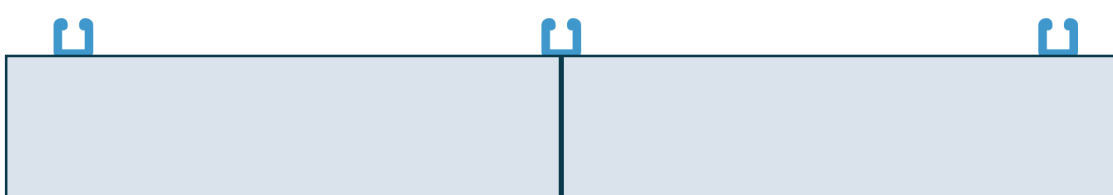


Strut Channel



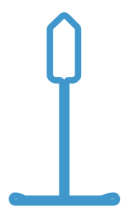
Individual Baffle

Page 3



Baffle in Series

Page 4

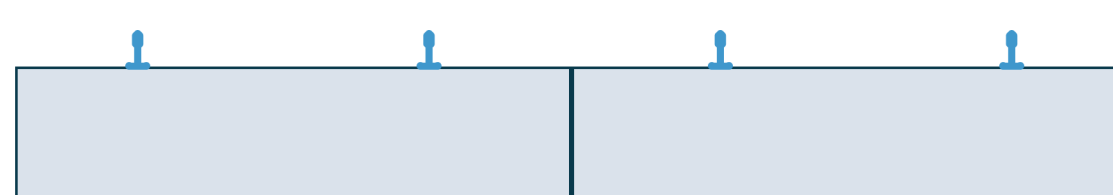


Ceiling Grid



Individual Baffle

Page 5

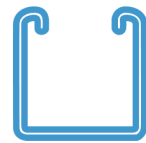
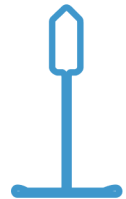


Baffle in Series

Page 6

Baffle Options

SoundPly® and Rensa™ Acoustic Lighting

	SOUNDPLY			RENSA ACOUSTIC LIGHTING		
	Ascend	Cella	Tilde	Ascend Lit	Cella Lit	Tilde Lit
Direct to Strut Channel 	✓	✓	✓	✓	✓	✓
Direct to Ceiling Grid 	✓	✓	✓	Direct to Strut Channel only	Direct to Strut Channel only	Direct to Strut Channel only

Hardware List

SoundPly® and Rensa™ Acoustic Lighting

Supplied by Navy Island

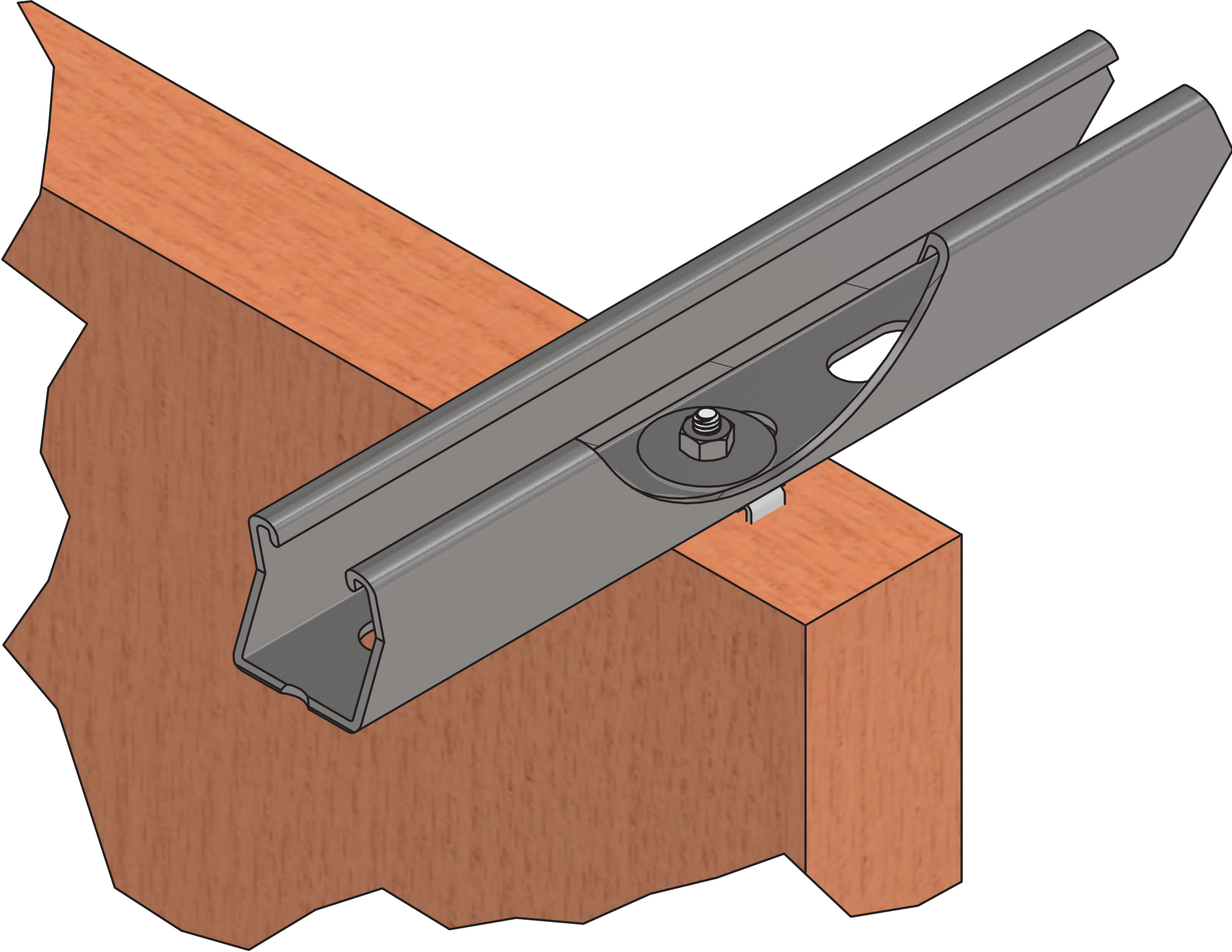
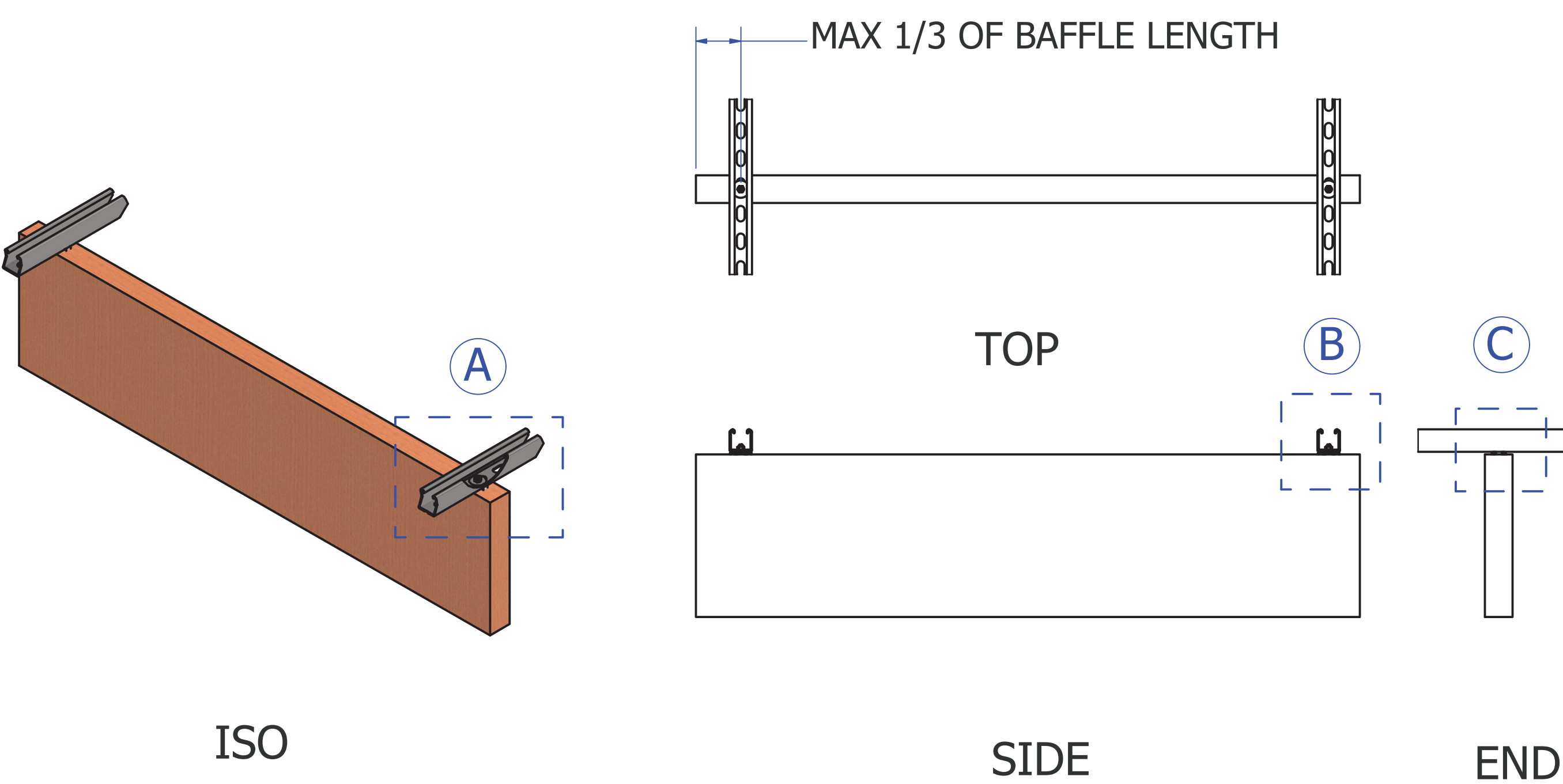
Name	Part Number
3M Dual Lock™	H303-1331
Bridge Plate Tall Post	H303-1360
Hex Nut 1/4"-20	HA03-1319
Screw for X-Hanger	HA01-1315
Washer 1.25" OD x 0.25" ID	HA02-1318
X-Hanger	H303-1322
X-Hanger Tall Post	H301-1346

Supplied by Others

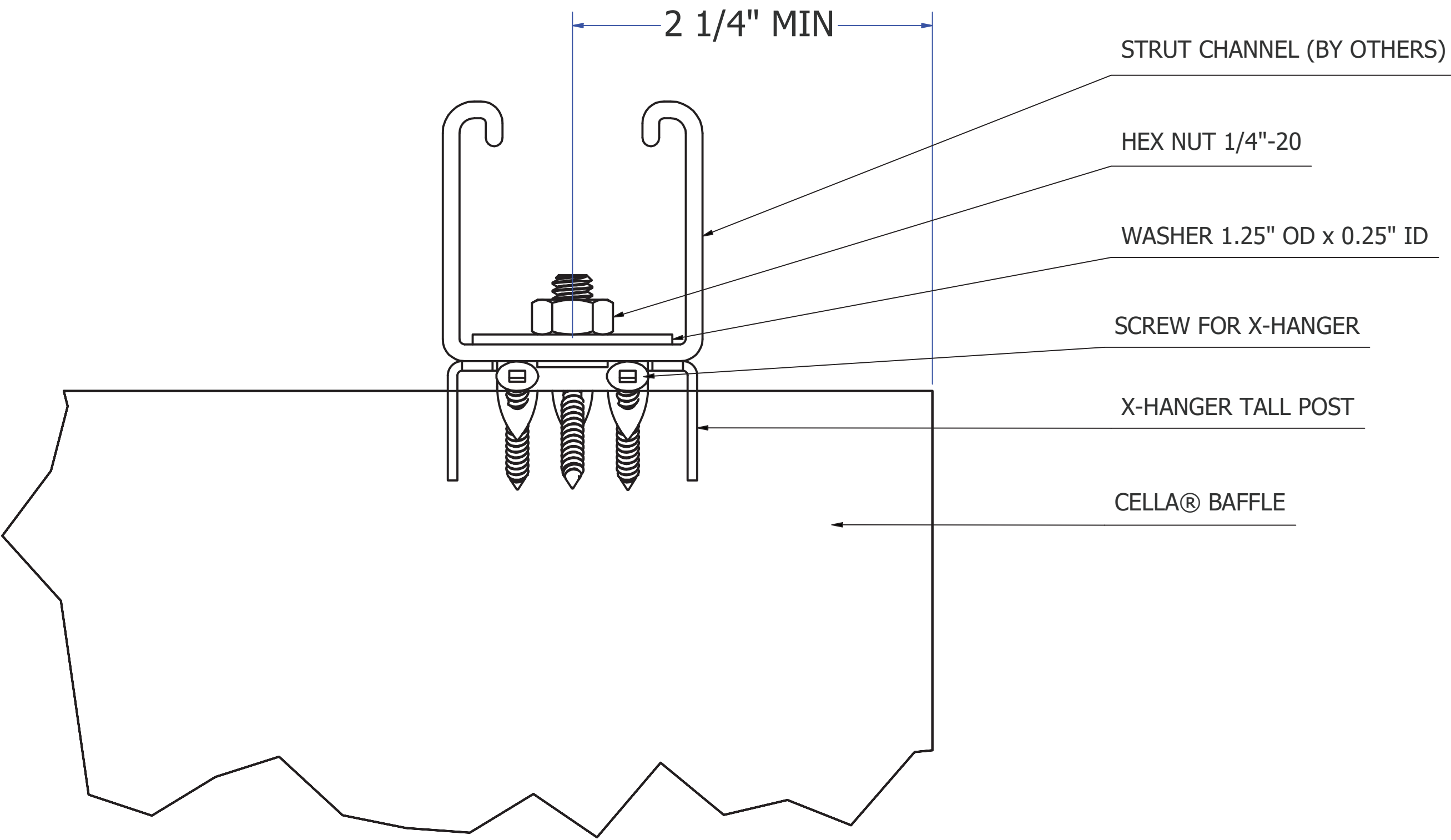
Name	Description
1/2" Metal Drilling Screws	#10 x 1/2" min, self-drilling metal screw Flanged hex head preferred
Ceiling Grid	As specified by client drawings
Strut Channel	Slotted strut channel, 1-5/8" wide

Individual Baffle to Unistrut

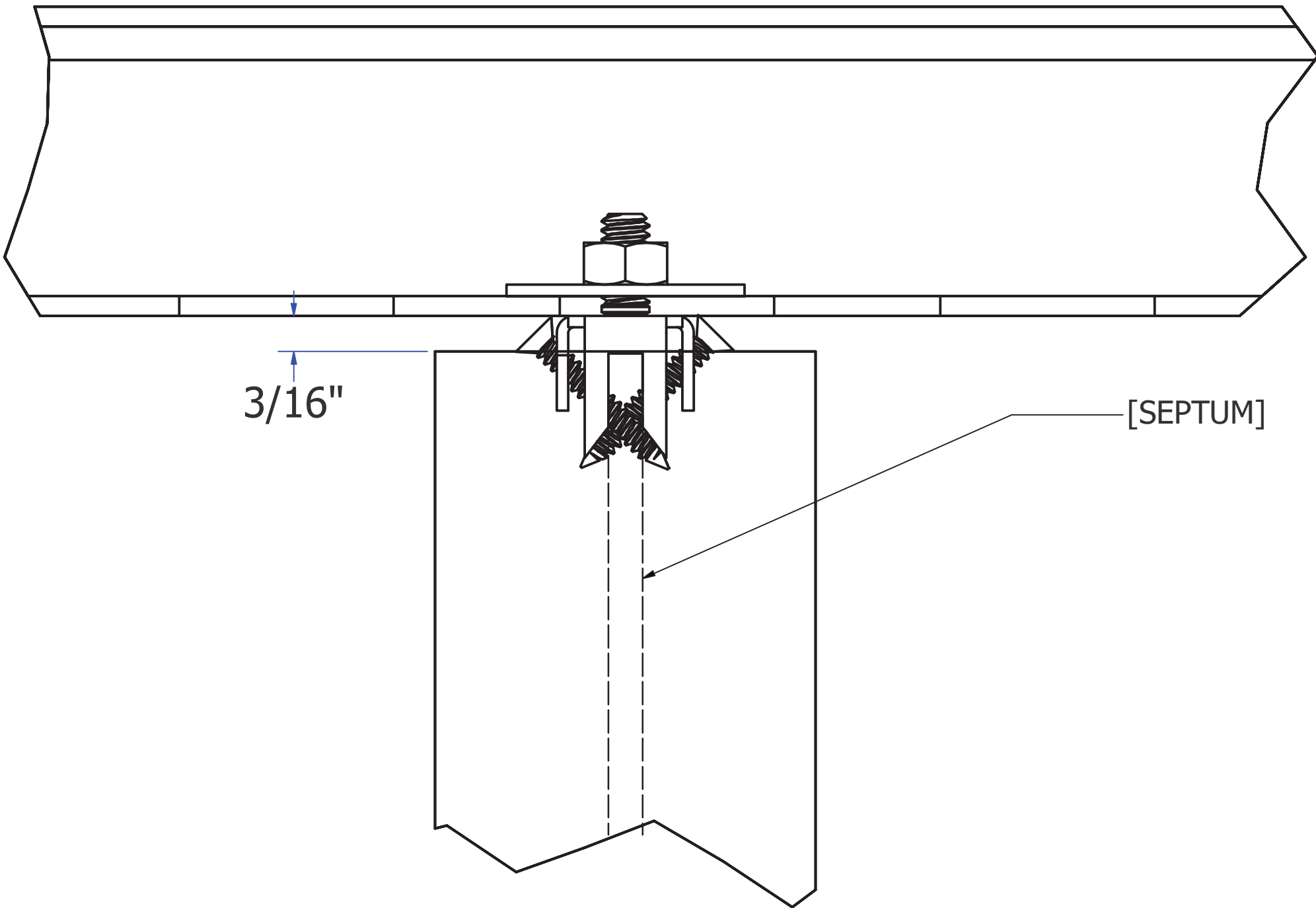
X-Hanger Tall Post Hardware



A ISO DETAIL - X-HANGER TALL POST ASSEMBLY



B SIDE DETAIL - X-HANGER TALL POST ASSEMBLY



C END DETAIL - X-HANGER TALL POST ASSEMBLY



These drawings have been created for illustrative purposes. The depiction of materials are not to be used as a submittal for that product.

SCALE BASED ON 24" x 36" SHEET SIZE.

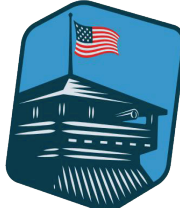
SUPPLIED BY NAVY ISLAND
CELLA® BAFFLE
HEX NUT 1/4"-20
SCREW FOR X-HANGER
WASHER 1.25" OD x 0.25" ID
X-HANGER TALL POST
SUPPLIED BY OTHERS
STRUT CHANNEL

Instructional Videos



Baffle in Series to Unistrut

X-Hanger Tall Post with Bridge Plate Tall Post Hardware



NAVY ISLAND

These drawings have been created for illustrative purposes. The depiction of materials are not to be used as a submittal for that product.

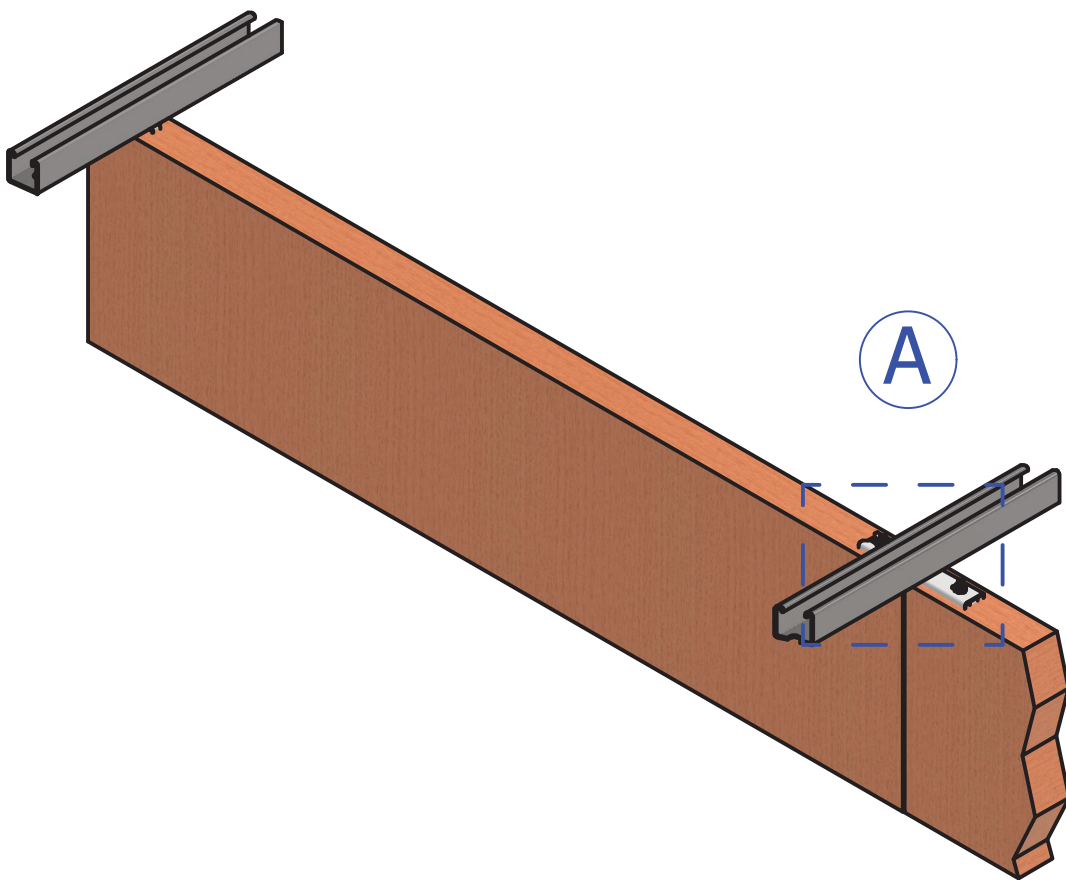
SCALE BASED ON 24" x 36" SHEET SIZE.

SUPPLIED BY NAVY ISLAND
3M DUAL LOCK™
BRIDGE PLATE TALL POST
CELLA® BAFFLE
HEX NUT 1/4"-20
SCREW FOR X-HANGER
WASHER 1.25" OD x 0.25" ID
X-HANGER TALL POST
SUPPLIED BY OTHERS
STRUT CHANNEL

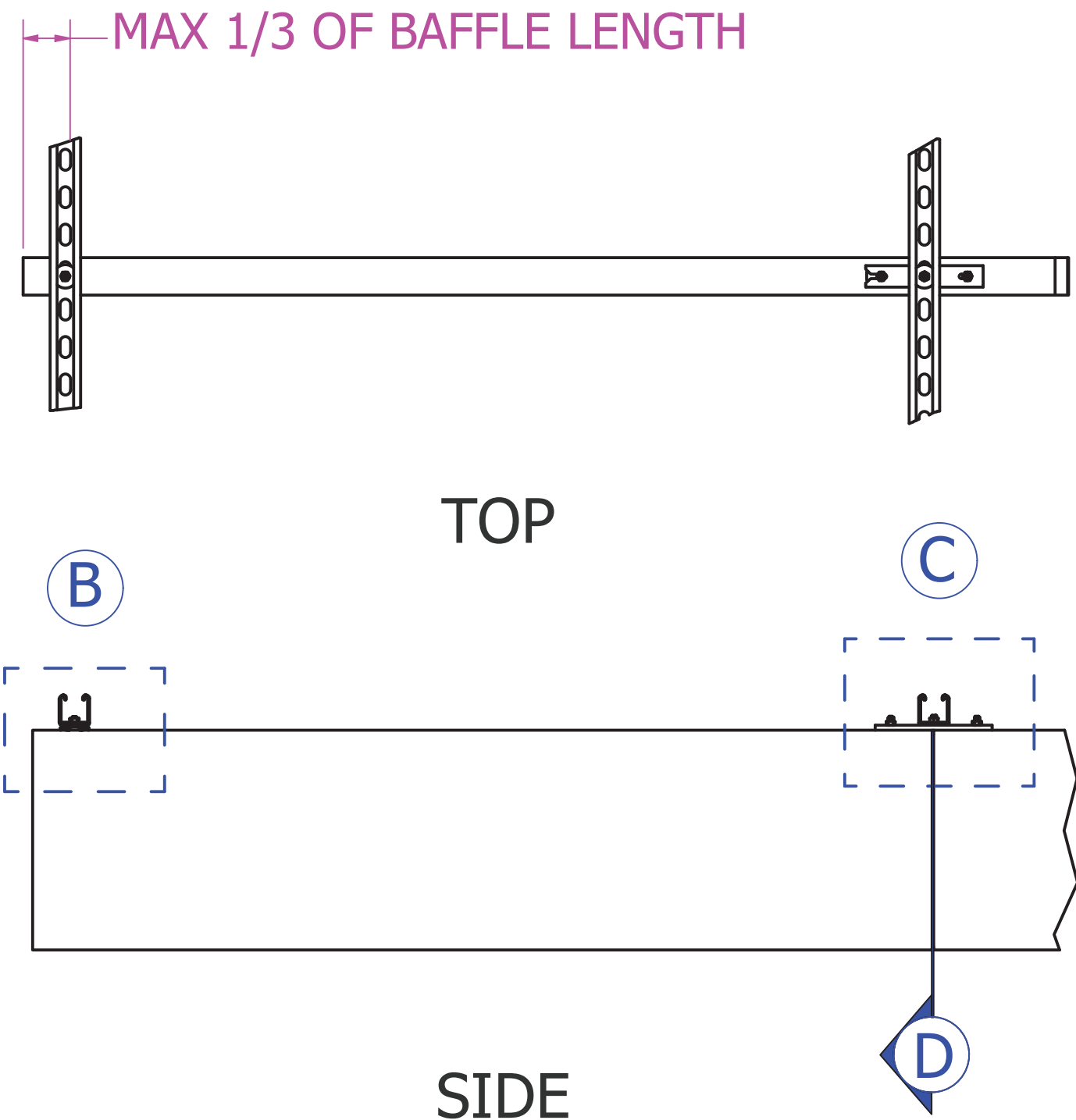
Instructional Videos



Page 4
Revision B
01-AUG-2023

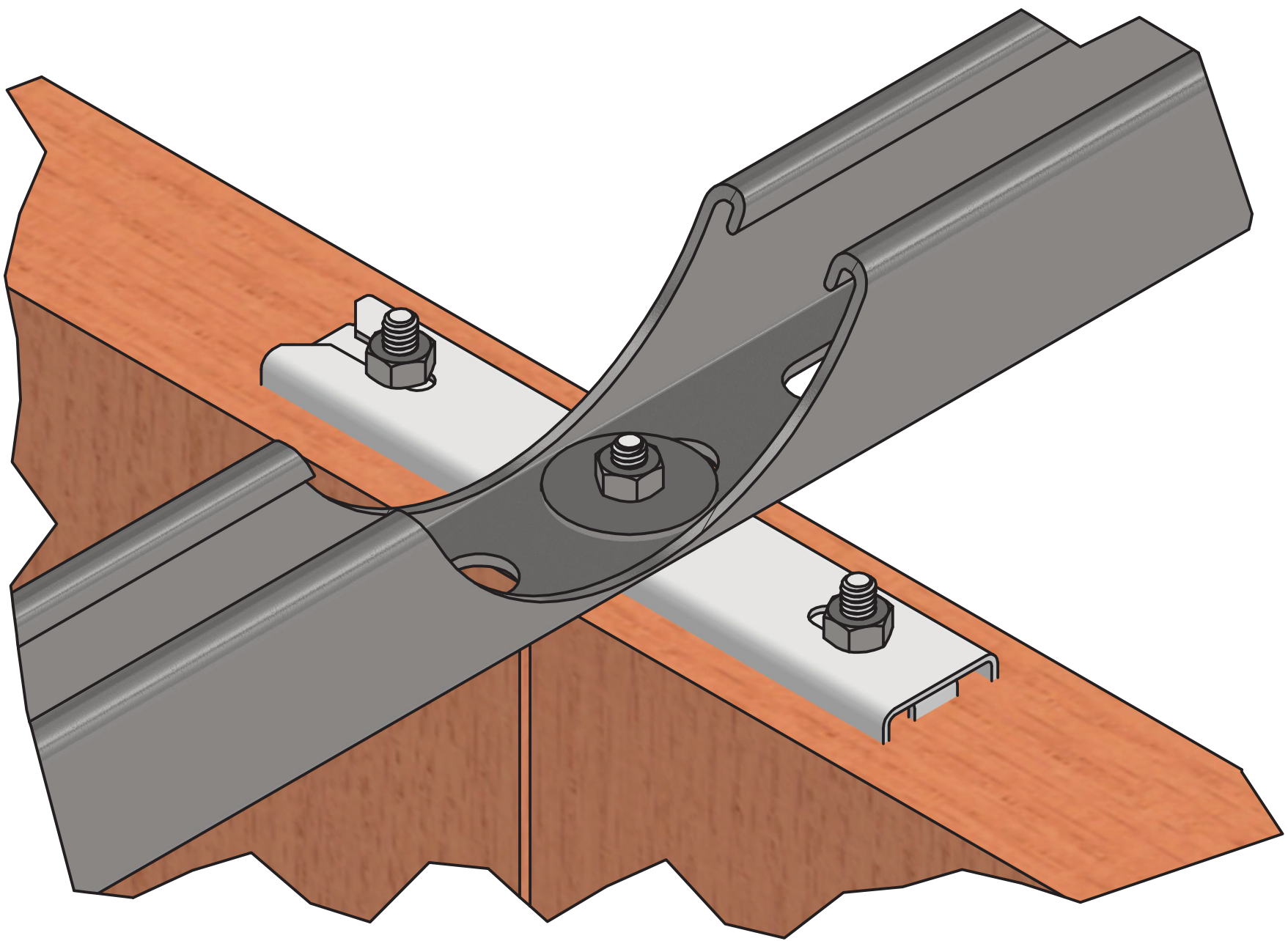


ISO

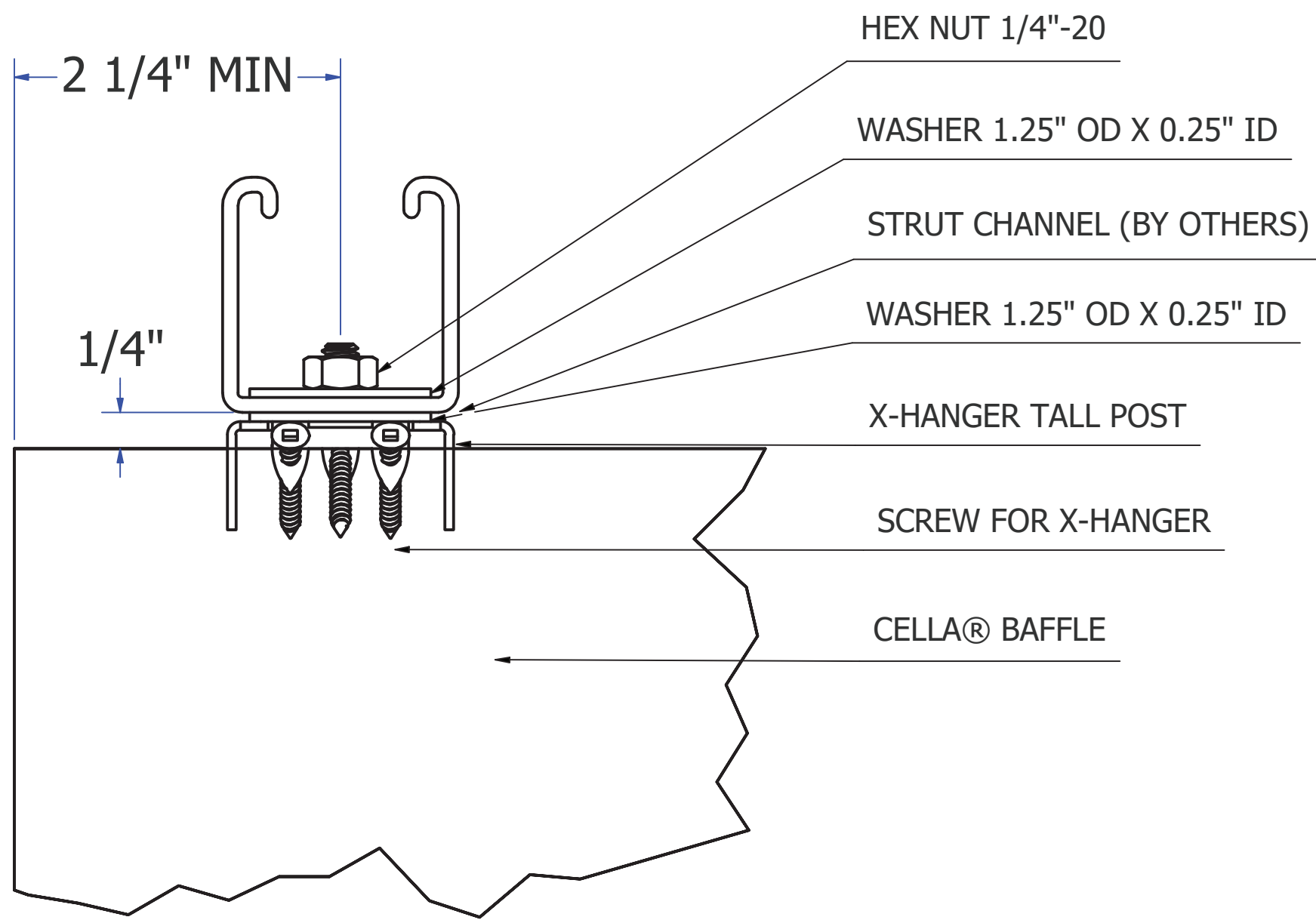


TOP

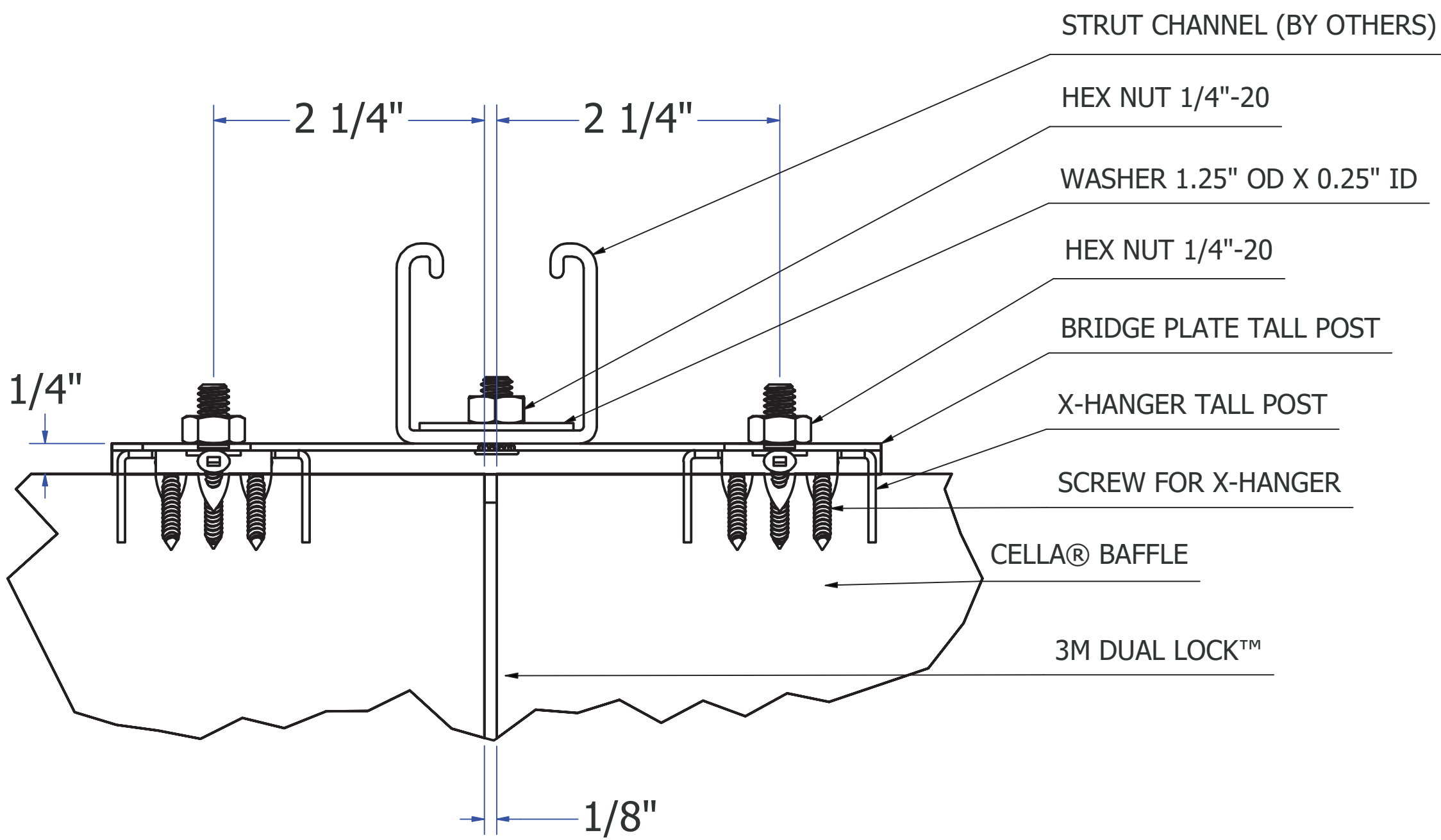
SIDE



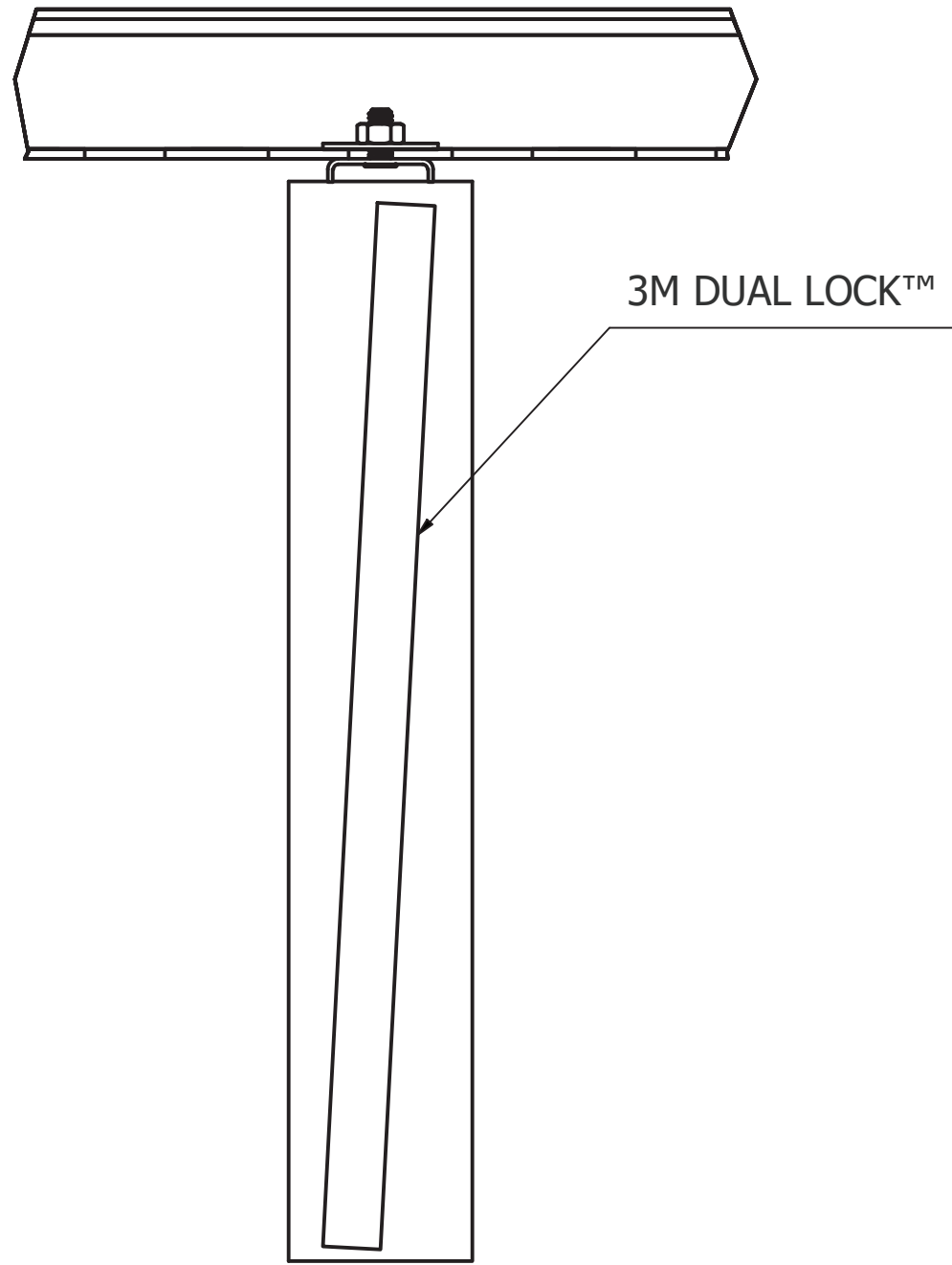
A ISO DETAIL - BRIDGE PLATE TALL POST ASSEMBLY



B SIDE DETAIL - X-HANGER TALL POST ASSEMBLY



C SIDE DETAIL - BRIDGE PLATE TALL POST ASSEMBLY



D END SECTION - 3M DUAL LOCK-™ ASSEMBLY

Individual Baffle to Ceiling Grid

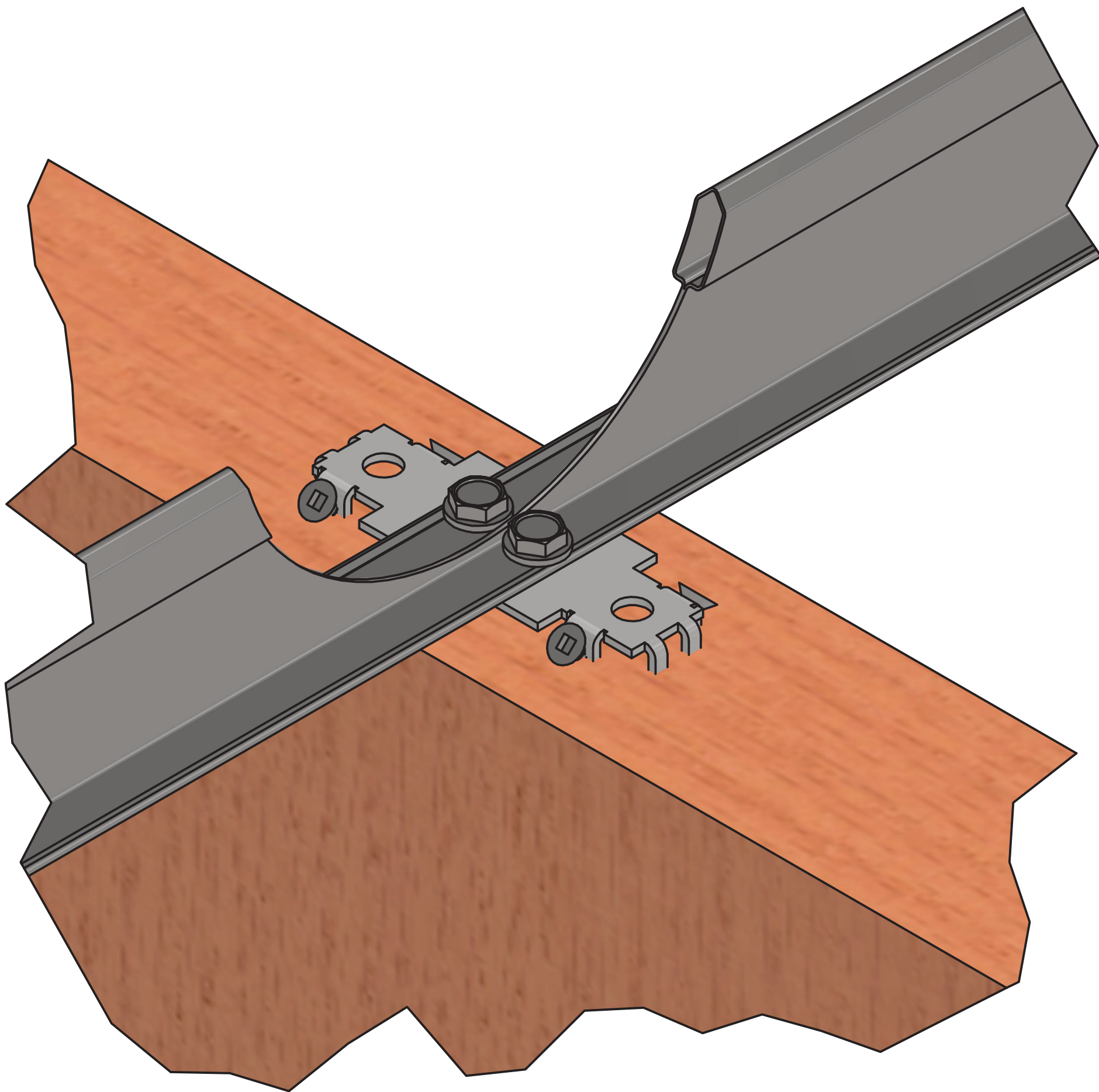
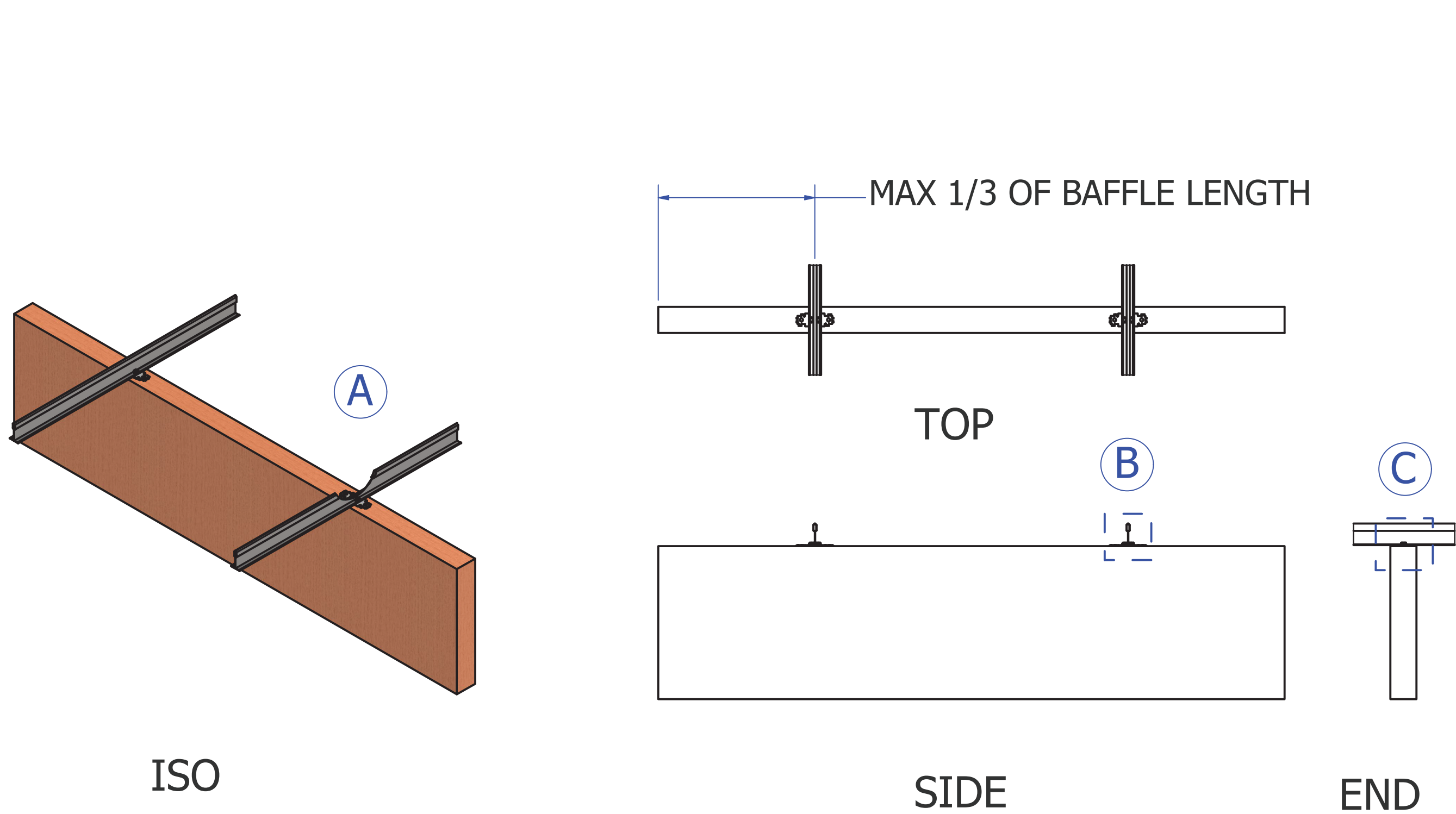
X-Hanger Hardware



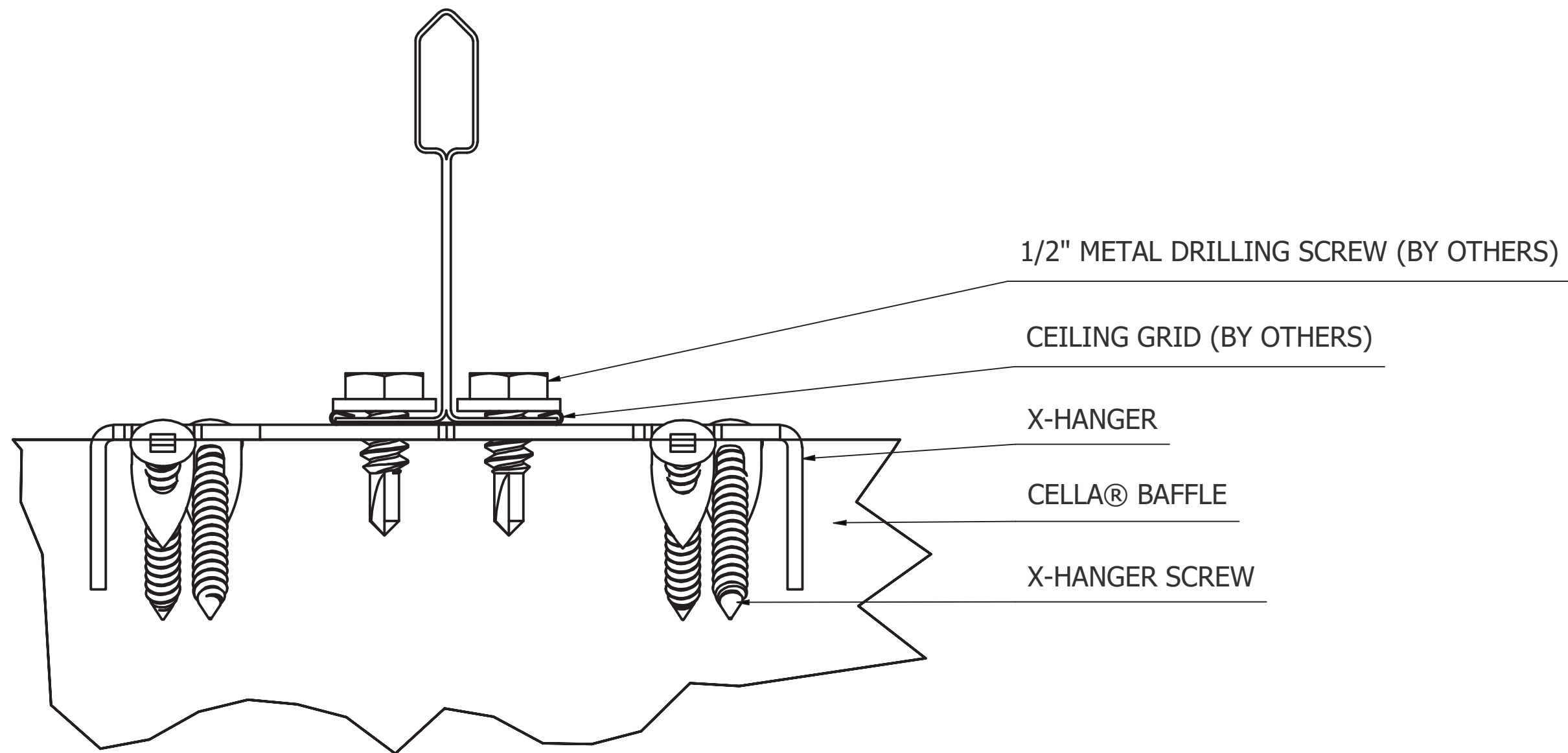
These drawings have been created for illustrative purposes. The depiction of materials are not to be used as a submittal for that product.

SCALE BASED ON 24" x 36" SHEET SIZE.

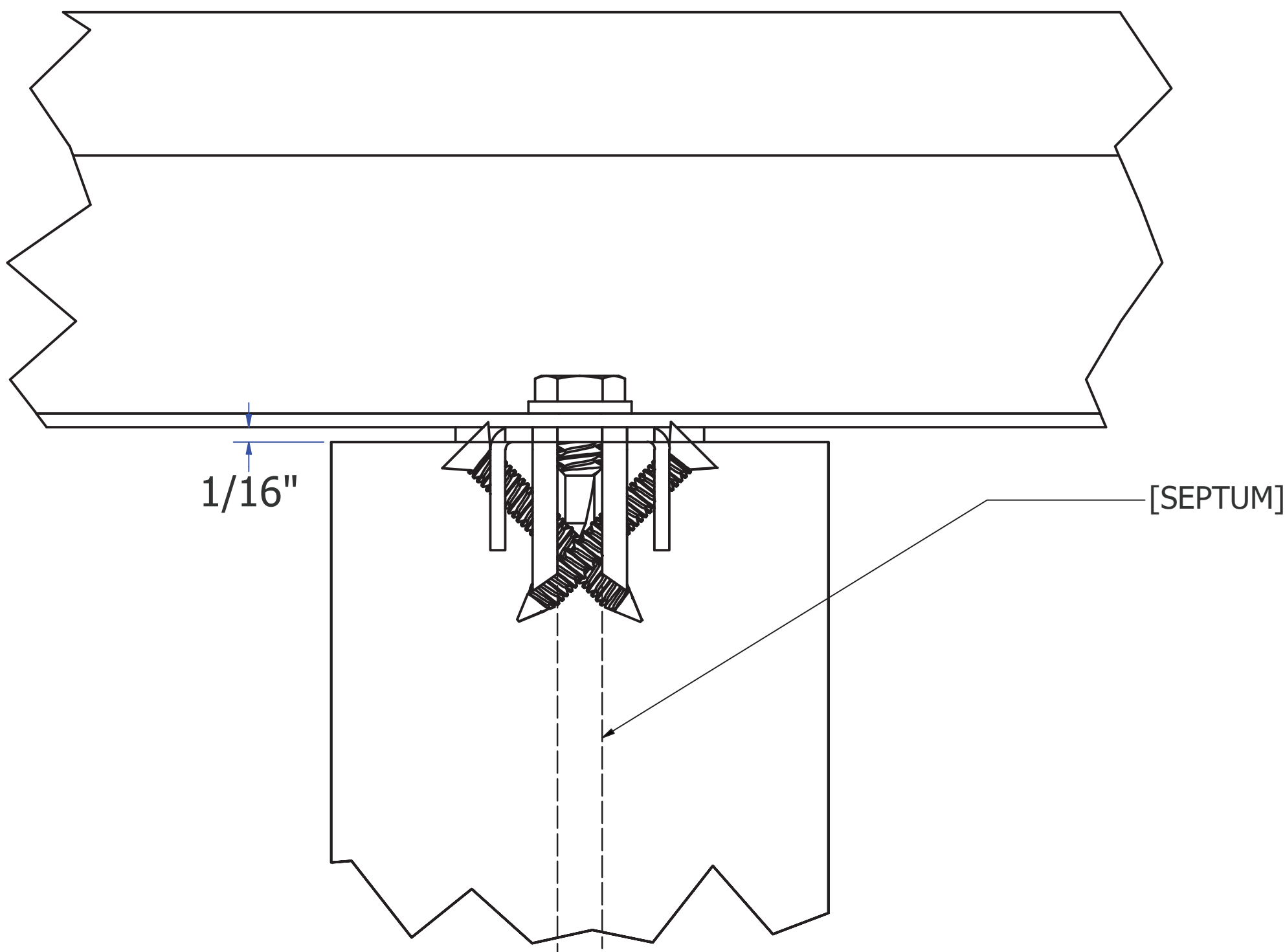
SUPPLIED BY NAVY ISLAND
SCREW FOR X-HANGER
X-HANGER
CELLA® BAFFLE
SUPPLIED BY OTHERS
1/2" METAL DRILLING SCREW
CEILING GRID



A ISO DETAIL - X-HANGER ASSEMBLY



B SIDE DETAIL - X-HANGER ASSEMBLY



C END DETAIL - X-HANGER ASSEMBLY

Instructional Videos



Baffle in Series to Ceiling Grid

X-Hanger Hardware



NAVY ISLAND

These drawings have been created for illustrative purposes. The depiction of materials are not to be used as a submittal for that product.

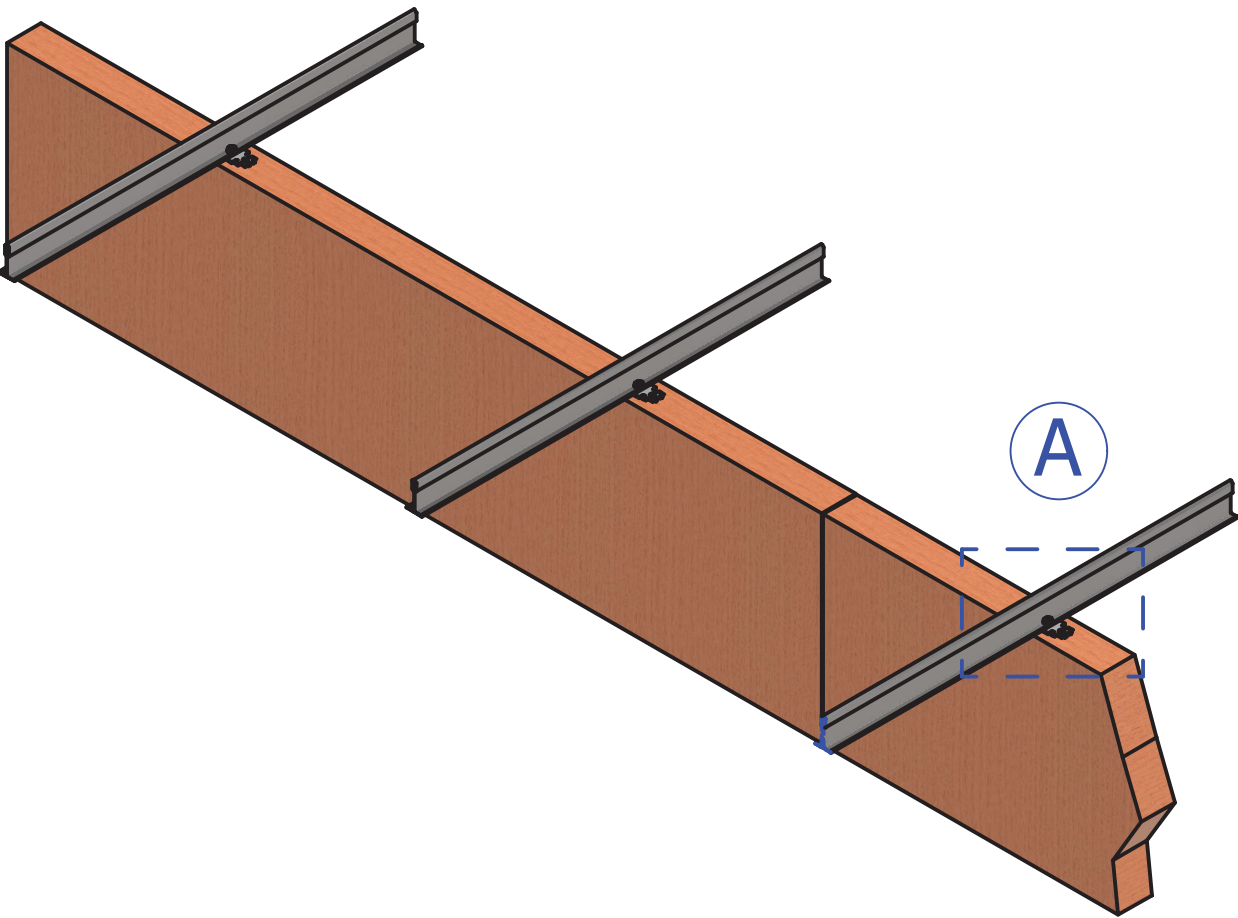
SCALE BASED ON 24" x 36" SHEET SIZE.

SUPPLIED BY NAVY ISLAND
3M DUAL LOCK™
CELLA® BAFFLE
SCREW FOR X-HANGER
X-HANGER
SUPPLIED BY OTHERS
1/2" METAL DRILLING SCREW
CEILING GRID

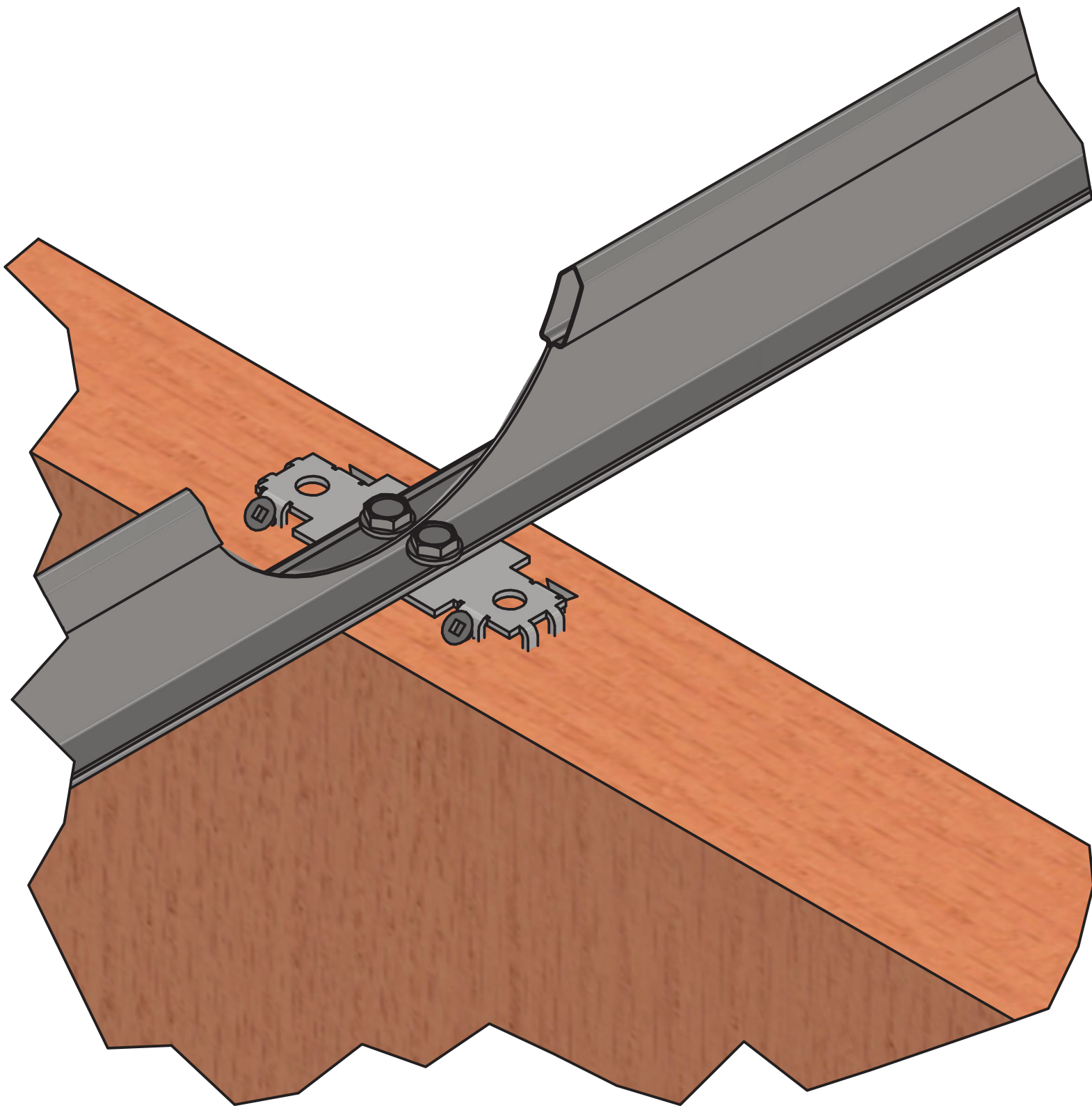
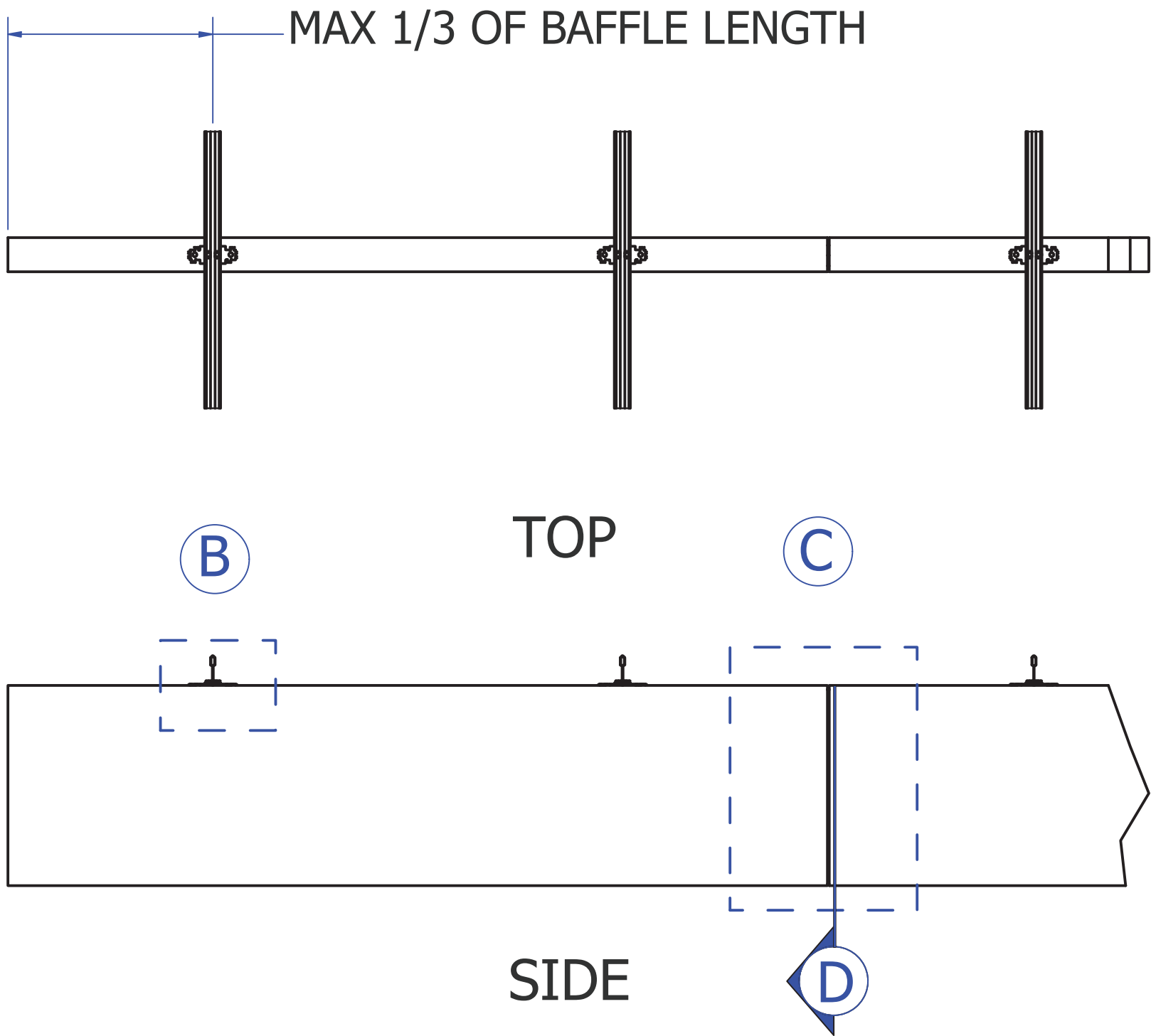
Instructional Videos



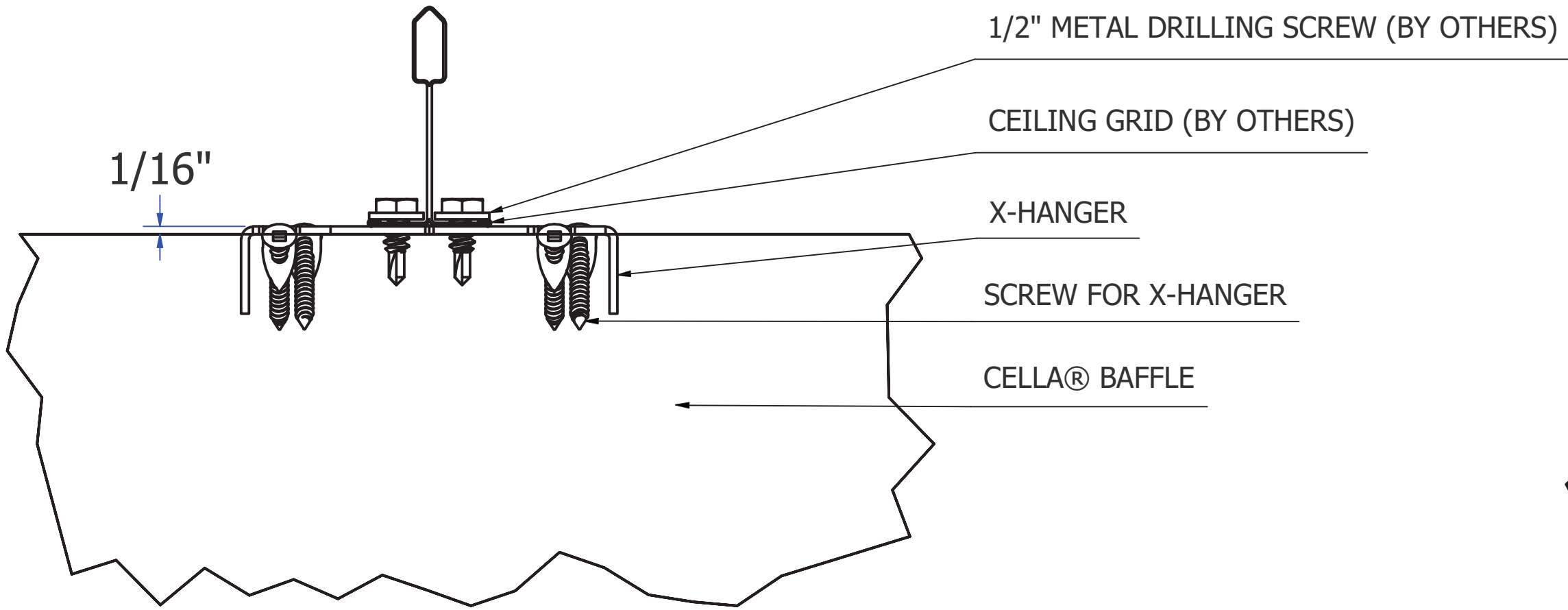
Page 6
Revision B
01-AUG-2023



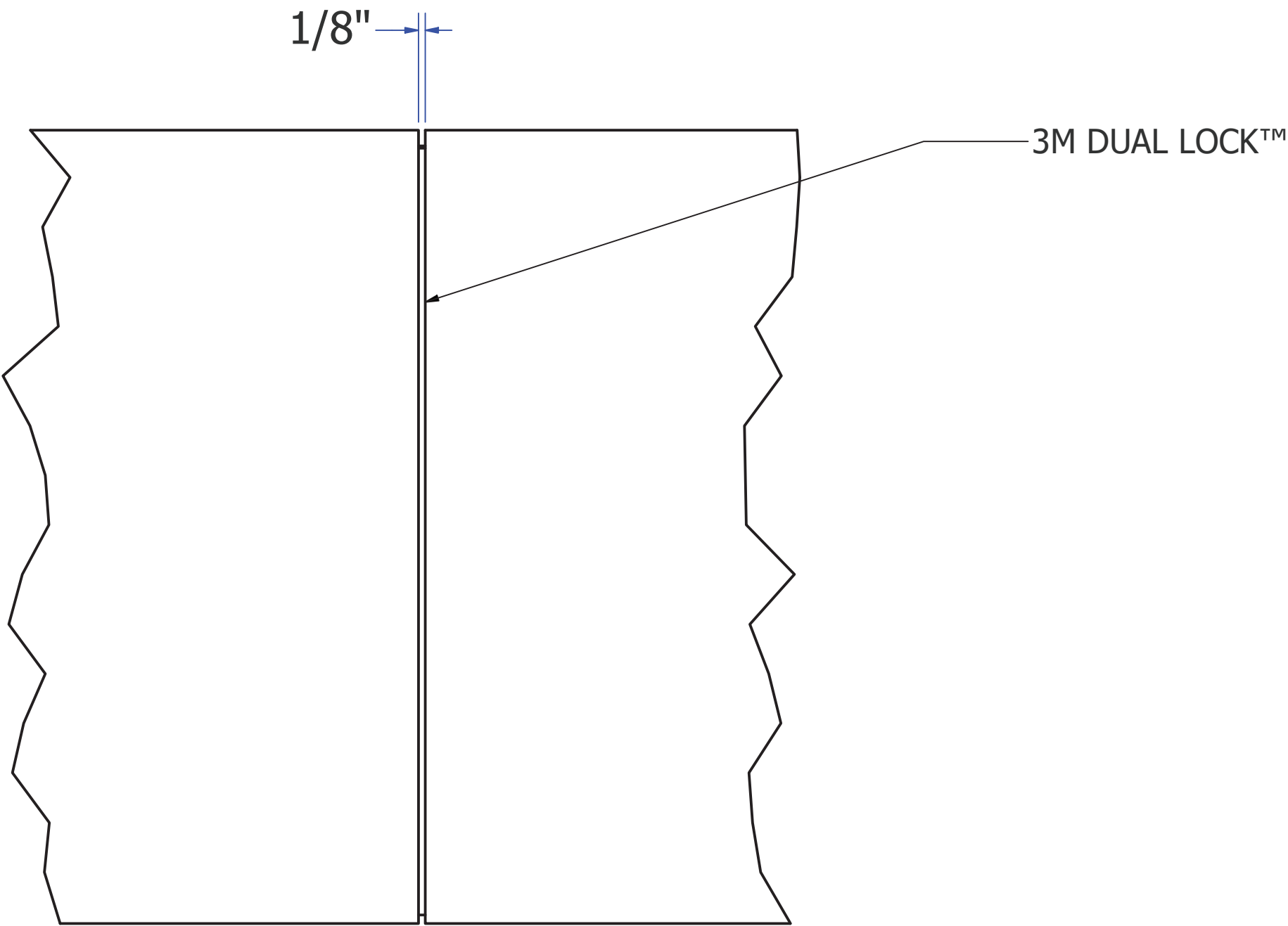
ISO



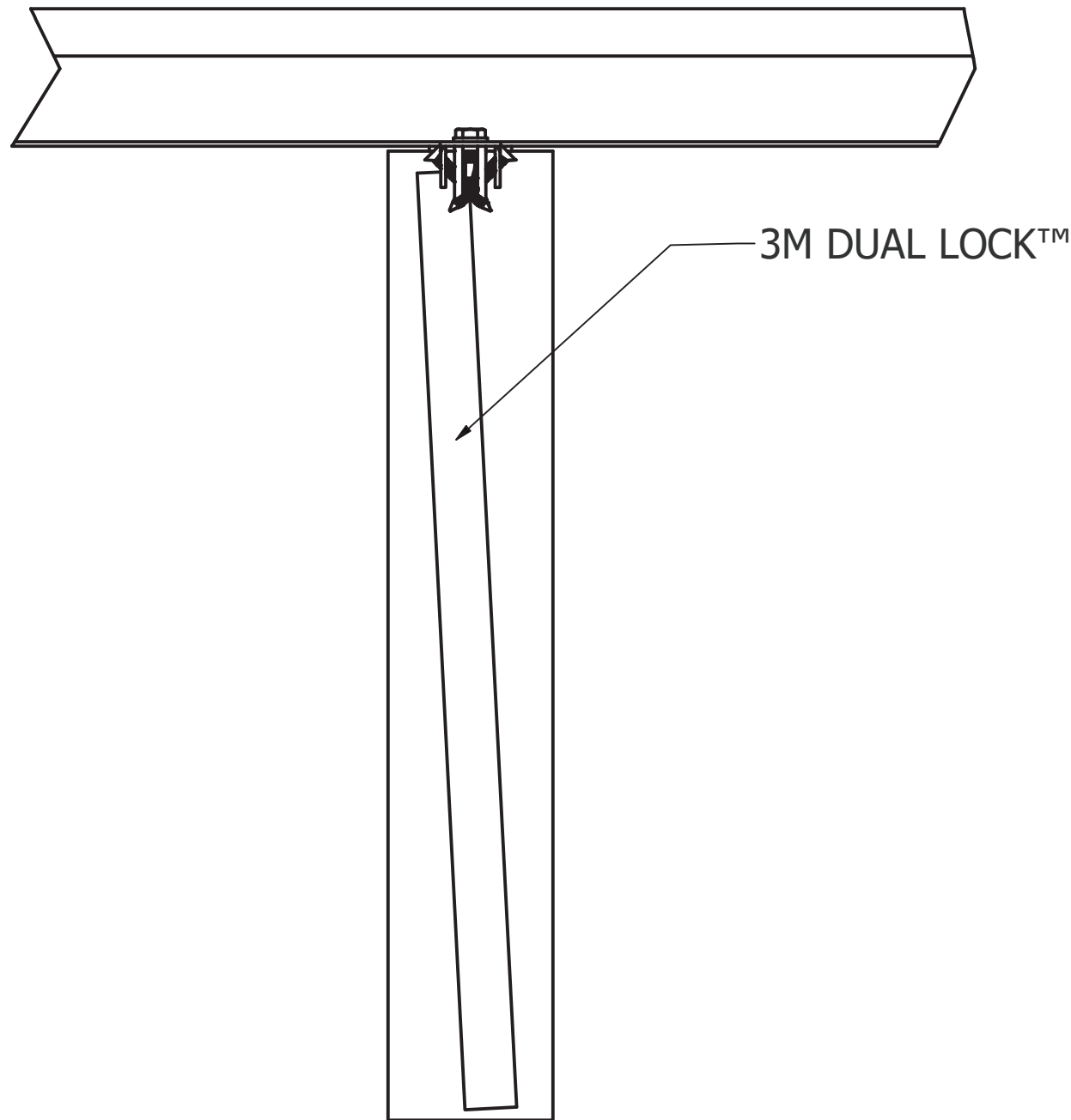
A ISO DETAIL - X-HANGER ASSEMBLY



B SIDE DETAIL - X-HANGER ASSEMBLY



C SIDE DETAIL - 3M DUAL LOCK™ ASSEMBLY



D END SECTION - 3M DUAL LOCK™ ASSEMBLY