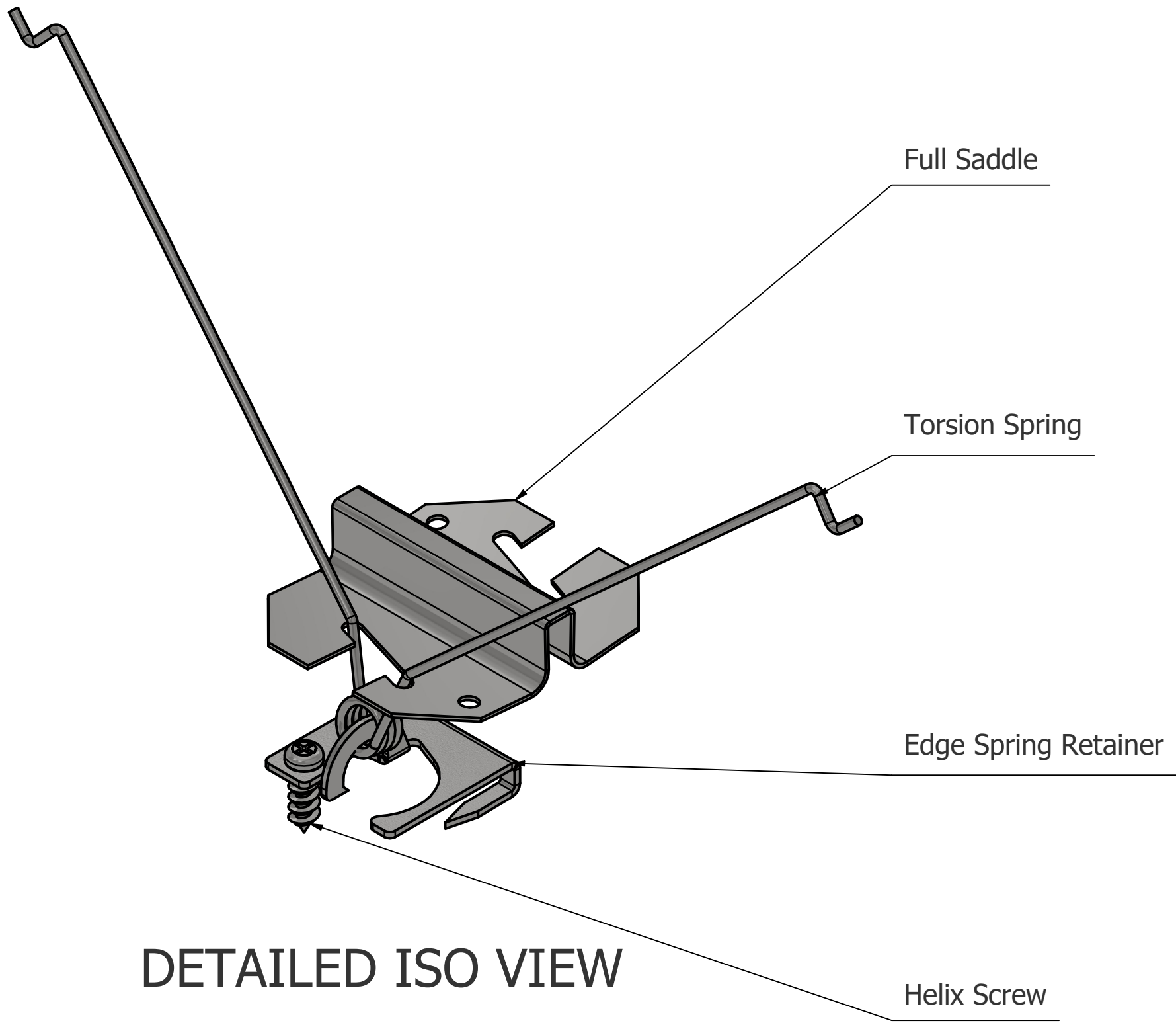
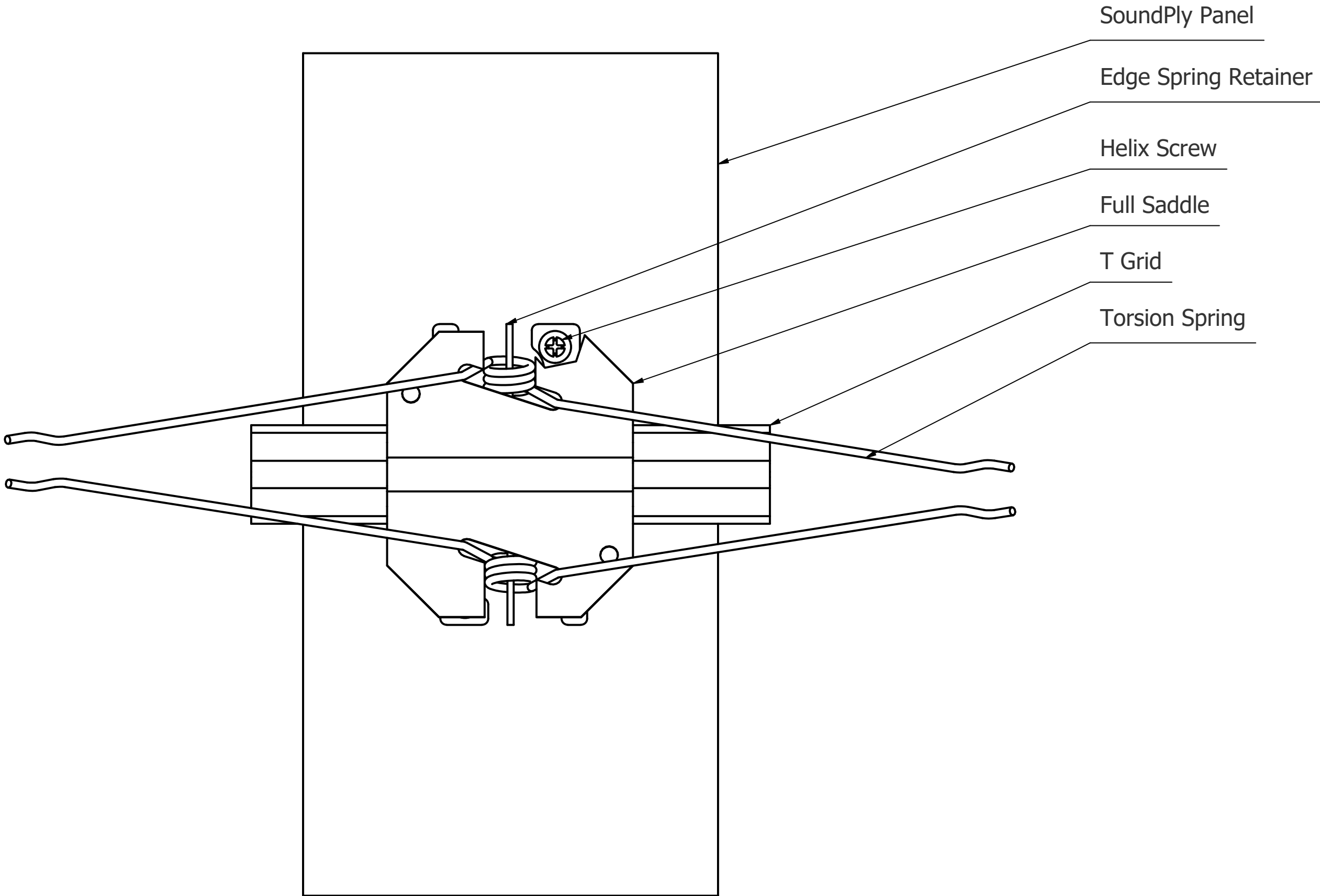


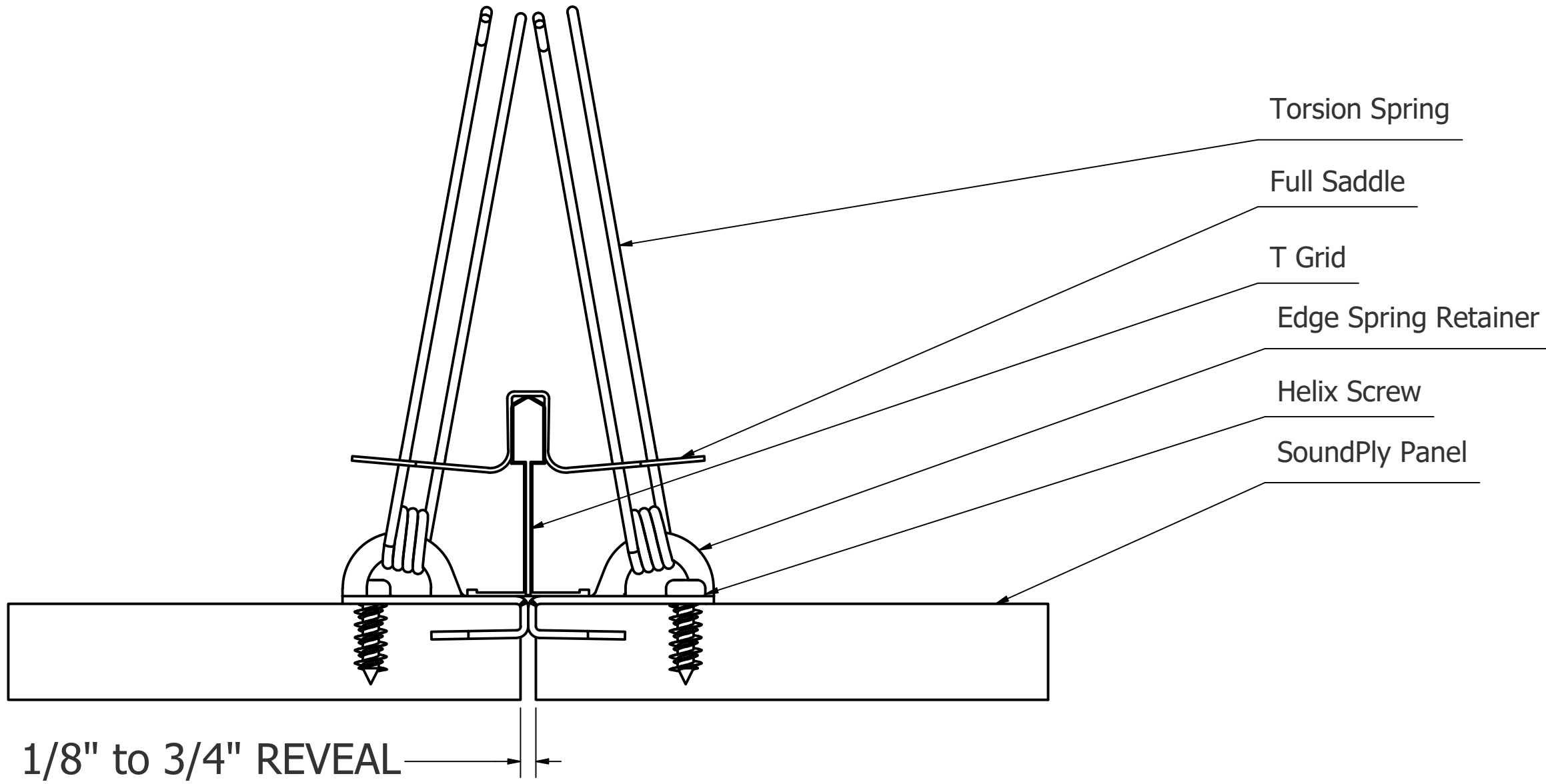
ISO VIEW



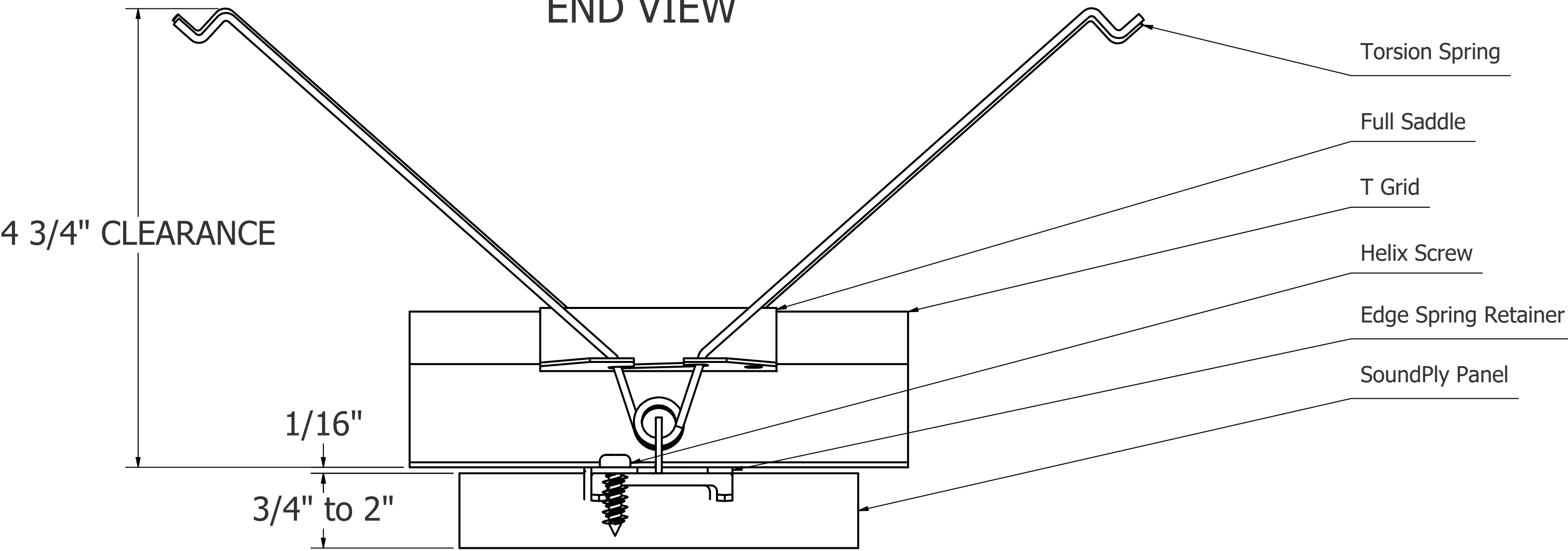
DETAILED ISO VIEW




TOP VIEW



END VIEW



SIDE VIEW



275 Marie Avenue East
West St. Paul, MN 55118
www.NavyIsland.com
www.SoundPly.com
(651) 451-4454

SCALE BASED ON 24" x 36" SHEET SIZE.

These drawings have been created for the sole use of Navy Island, Inc. The depiction of materials that are not supplied by NII are not to be used as a submittal for that product.

Installation of NII's products, including hardware, that does not meet NII's guidelines are void of warranty and are not the responsibility of Navy Island, Inc.

T-grid, hardware or z-bar layouts are examples only. Installation contractor is responsible for actual grid layout and all cut-out size and location coordination.

Navy Island is not responsible for accuracy of information from, or coordination with, trades not directly contracted to Navy Island.

SHEET TITLE

Torsion Spring Mounting Detail

GRID RECOMMENDATIONS

USG DONN	ZXLA26 OR DX26	12' HD MAIN
	ZXLA24 OR DX426	4' HD CROSS TEE
	ZXLA224	2' HD CROSS TEE

ARMSTRONG PRELUDE	7301	12' HD MAIN
	XL7341	4' HD CROSS TEE
	XL8320	2' HD CROSS TEE

PART NUMBER	TITLE
H101-1292	Torsion Spring
H101-0548	Full Saddle
H101-0811	Edge Spring Retainer
HA05-0951	Helix Screw
	Soundply Panel
	T grid Supplied by others

DRAWN BY JGR