



BAFFLE CONNEX

FIELD-CUT AND ASSEMBLED CUSTOM ARRAY SYSTEM

INSTALLATION INSTRUCTIONS

TABLE OF CONTENTS

1 INTRODUCTION

- Hardware
- Baffle Identification
- General Procedure

2 LAYOUT & CONSTRAINTS

- Kit Options
- Main Constraints
- Cross Member Constraints
- Angle Constraints

3 SLOT JIG

- Components
- Usage

4 CUTTING SLOTS

- Alignment
- Cutting

5 INSTALLING TAB LOCKS

6 HANGING

- Hanging Mains
- Attaching Cross Members

7 ANGLED BAFFLES

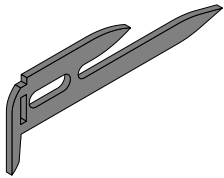
8 TWIN TAB LOCKS

9 RENSA LIT BAFFLES

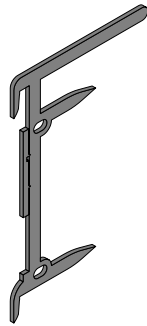
10 CROSS MEMBER LENGTH

- Example Case
- Cross Member Length Tables

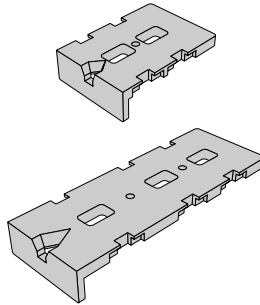
1.1 SUPPLIED HARDWARE



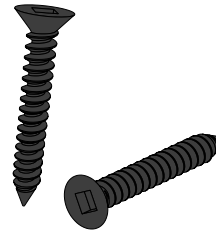
TAB LOCK



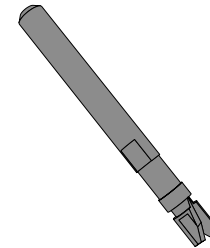
**TWIN TAB
LOCK**



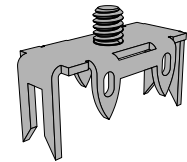
SLOT JIGS



#7 SCREWS

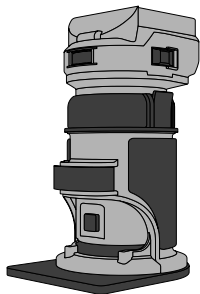


**1/4" ROUTER
BIT**

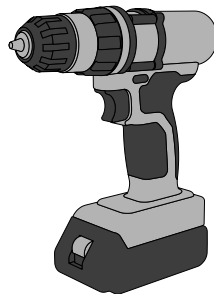


**HANGING
HARDWARE**

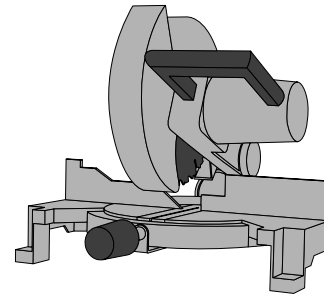
REQUIRED TOOLS



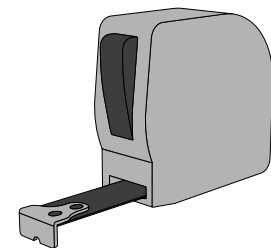
ROUTER



SCREW GUN



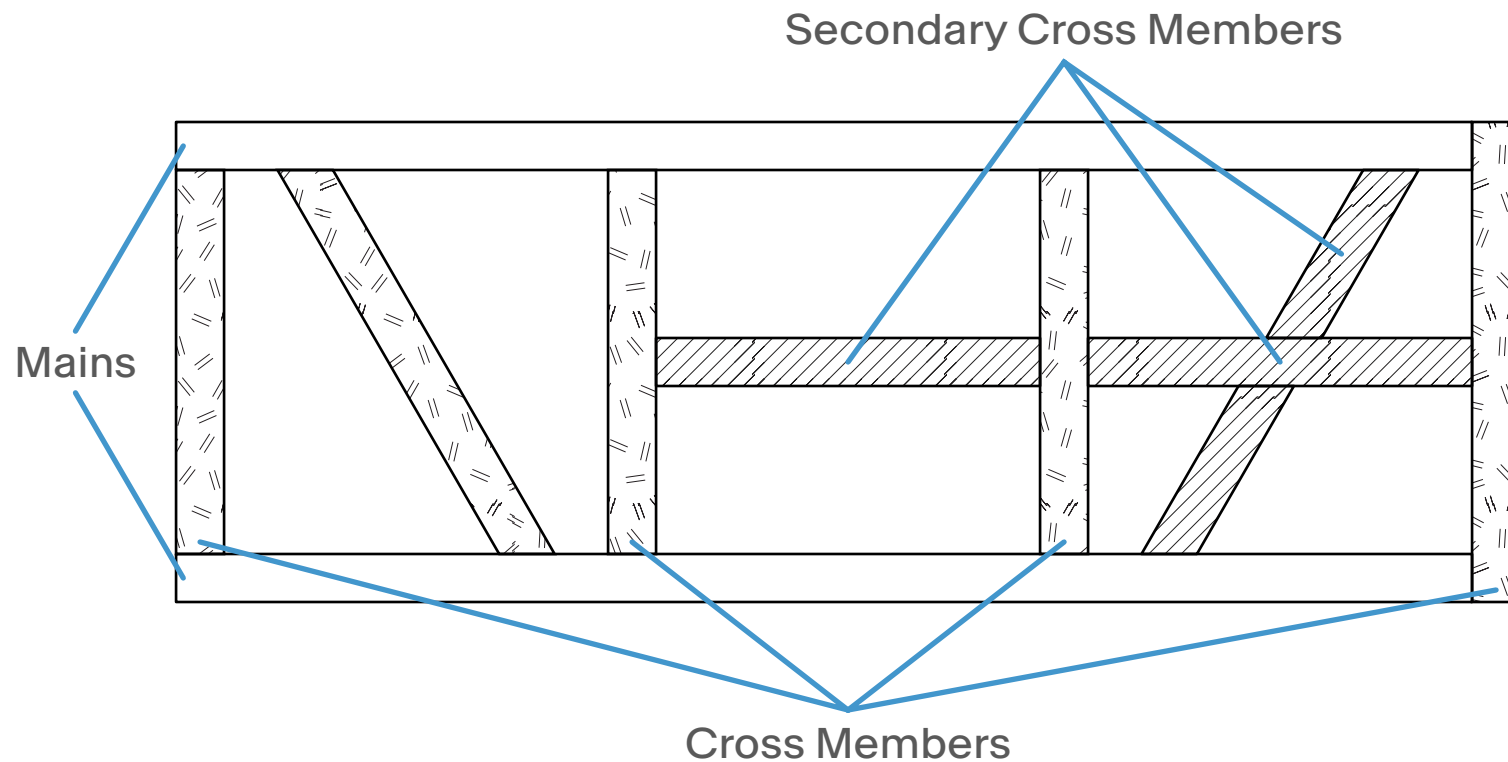
**COMPOUND
MITER SAW**



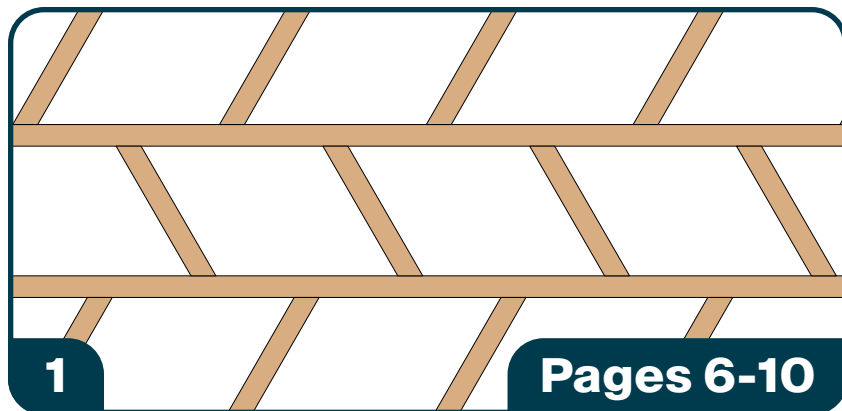
TAPE MEASURE

1.2 BAFFLE IDENTIFICATION

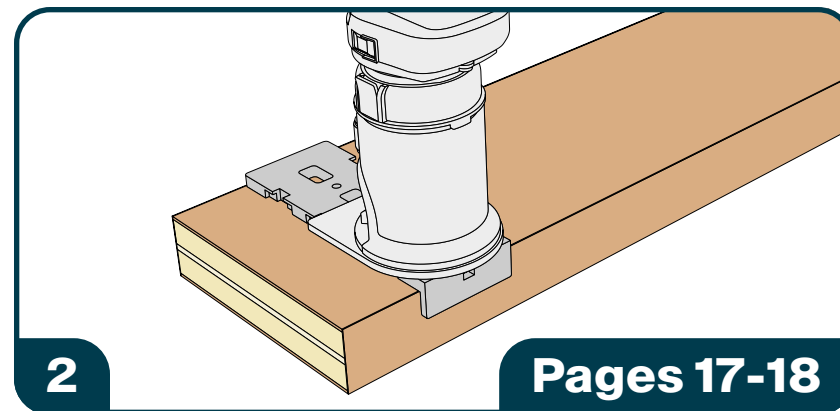
- Mains support the array
- Cross Members are hung on Mains
- Secondary Cross Members connect to other Cross Members



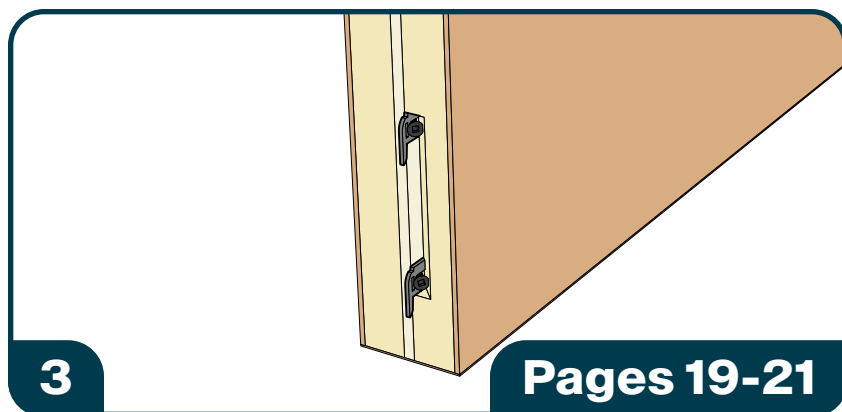
1.3 GENERAL PROCEDURE



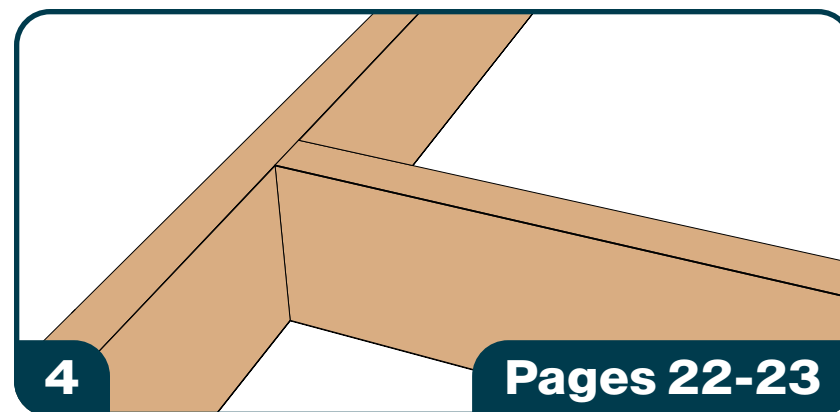
Plan layout and cut baffles



Cut slots in Mains



Insert Tab Locks in Cross Members



Hang and connect baffles

2.1 | LAYOUT OPTIONS

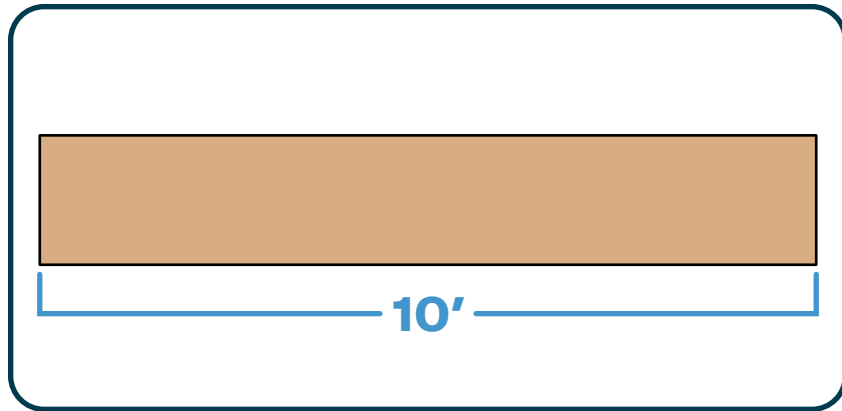
STANDARD KITS

- Follow provided layout to create array
- Baffles come with pre-cut slots and hardware installed
- Can be adjusted as needed in the field

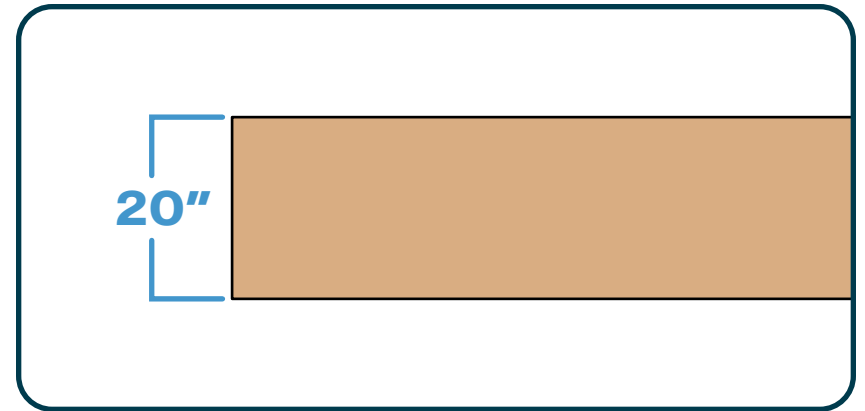
CUSTOM ARRAYS

- Any layout created following the limitations on the next pages

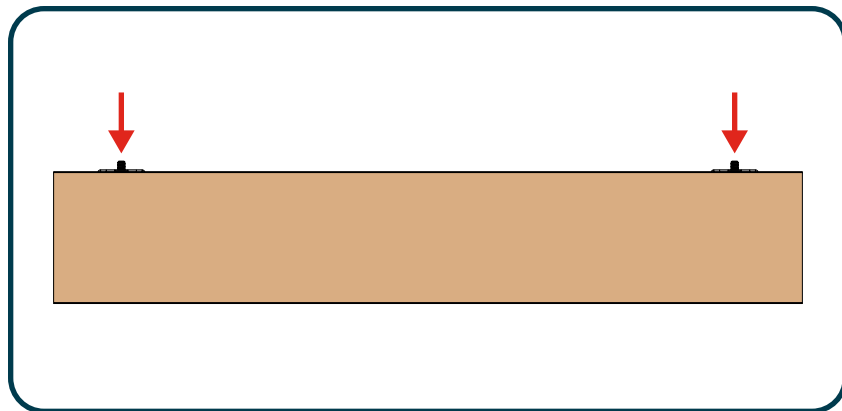
2.2 MAIN CONSTRAINTS



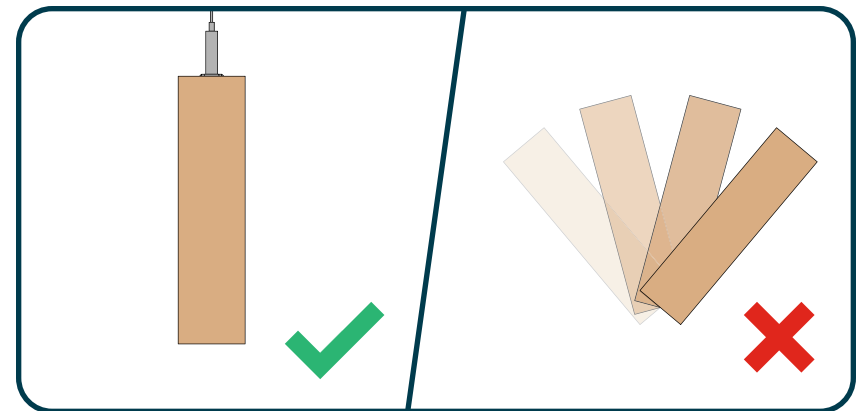
Max Length: 10'



Max Height: 20"

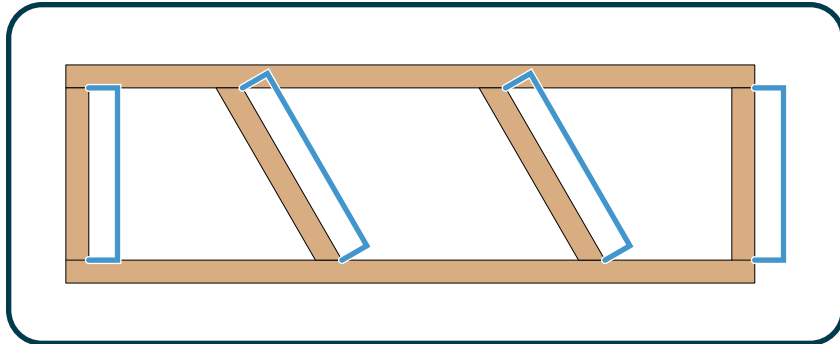


One X-Hanger at each end



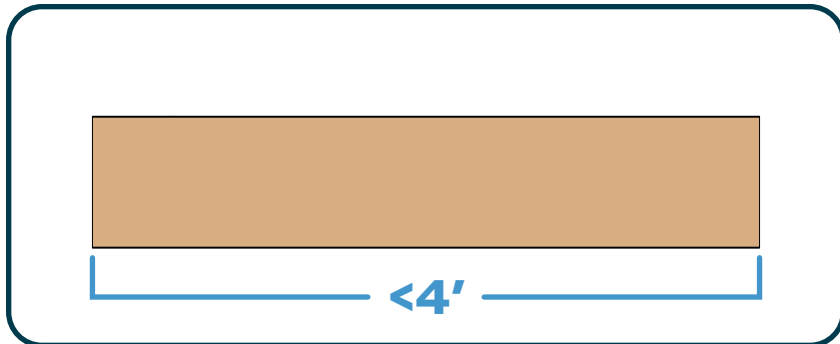
Hung Vertically

2.3 CROSS MEMBER CONSTRAINTS

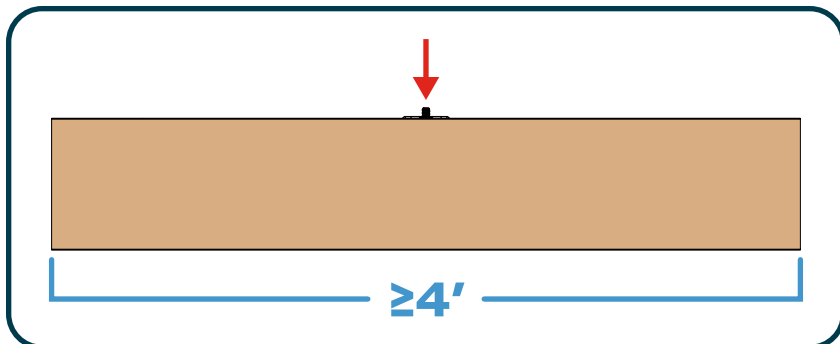


The total allowable Cross Member length that can go between two Mains depends on the weight of the system.

Refer to [Section 10](#) for more information.



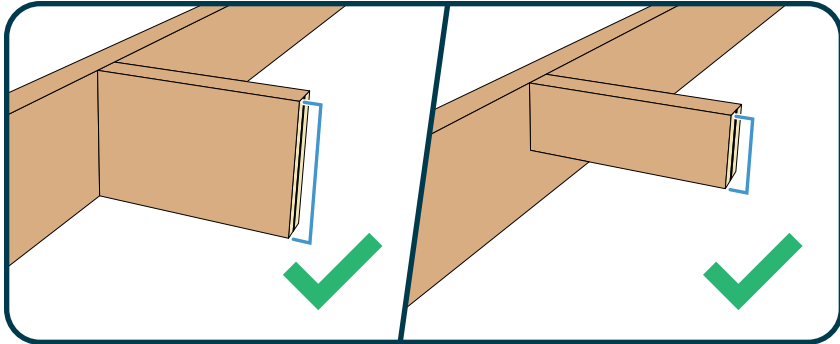
Cross Members under 4' long do not need extra support unless they exceed the weight limit determined by the total allowable Cross Member length.



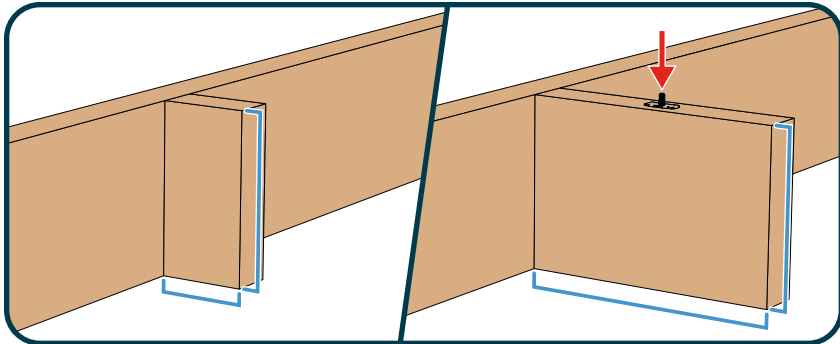
Cross Members over 4' long must be supported with an X-Hanger.

2.3

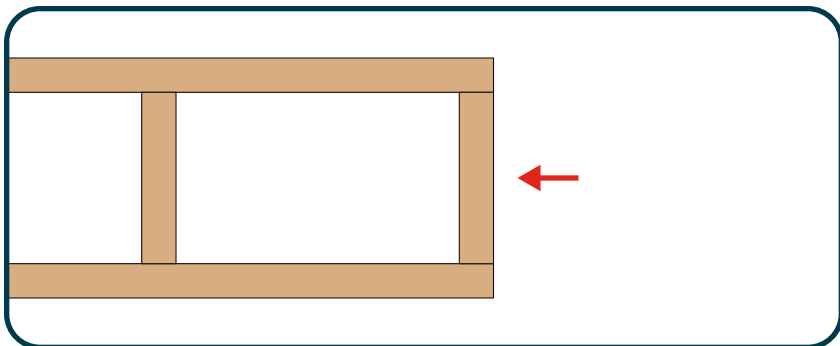
CROSS MEMBER CONSTRAINTS



Cross Members can be the same height as or shorter than the Mains.

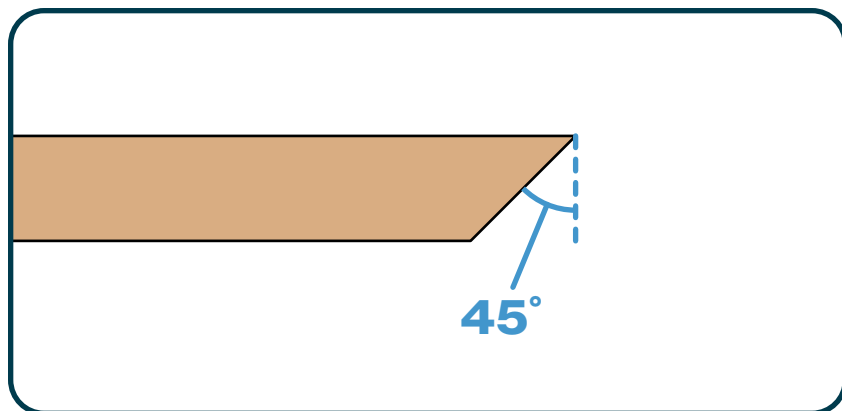
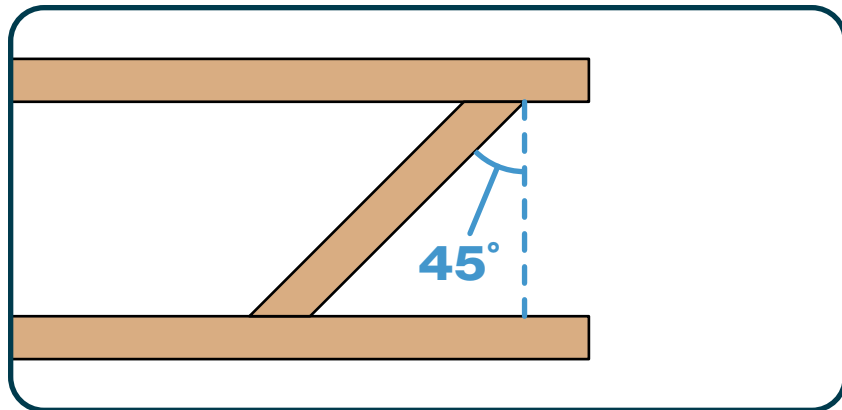


Floating ends that are longer than they are tall must be supported with an X-hanger.

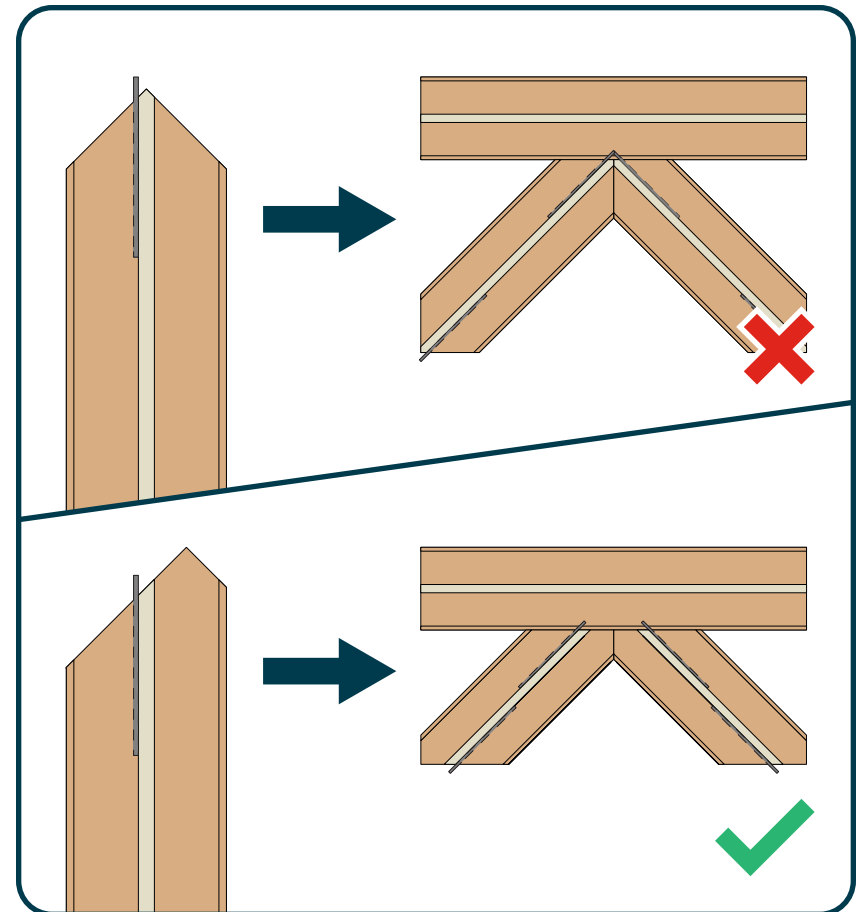


Cross Members at the end of a row should sit between Mains.

2.4 | ANGLE CONSTRAINTS



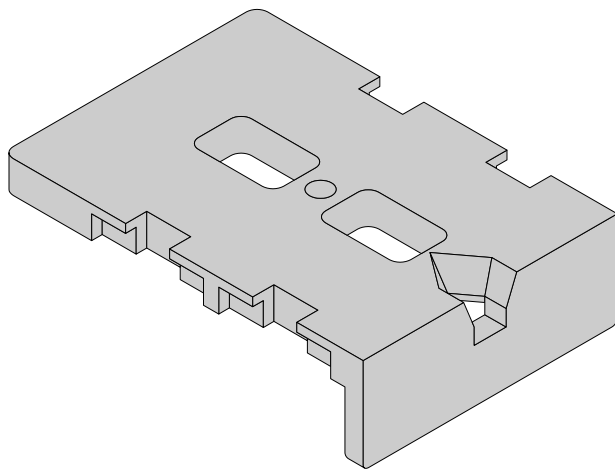
Max Angle: 45 Degrees



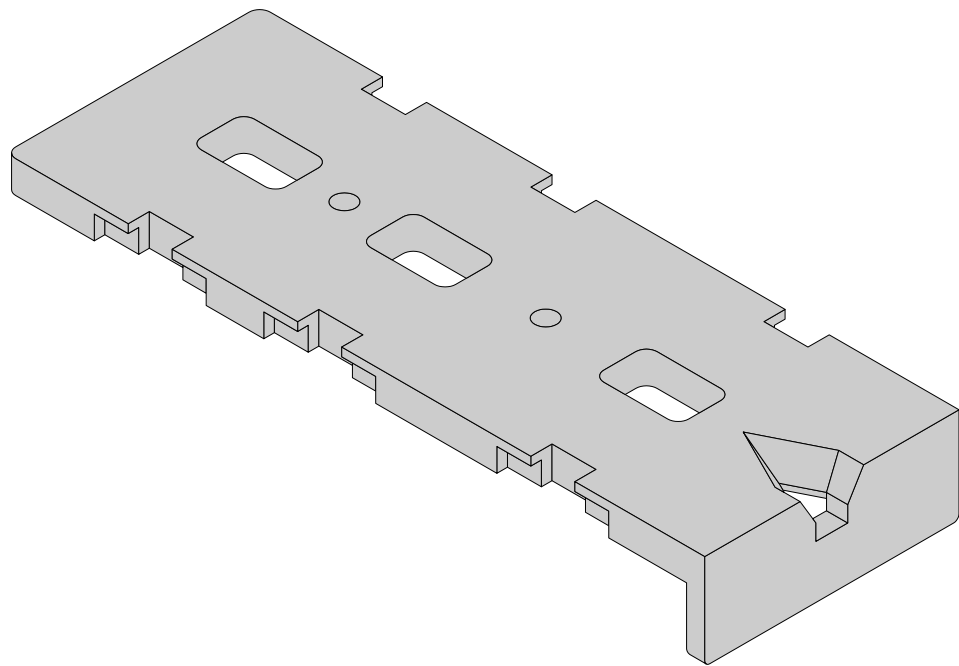
It is not recommend to angle both sides of a cross member. Extra precautions must be taken in the field to ensure cuts and tabs align properly to Mains.

3.1 | SLOT JIG

Used for creating slots in baffles and aligning Tab Locks on end of baffle

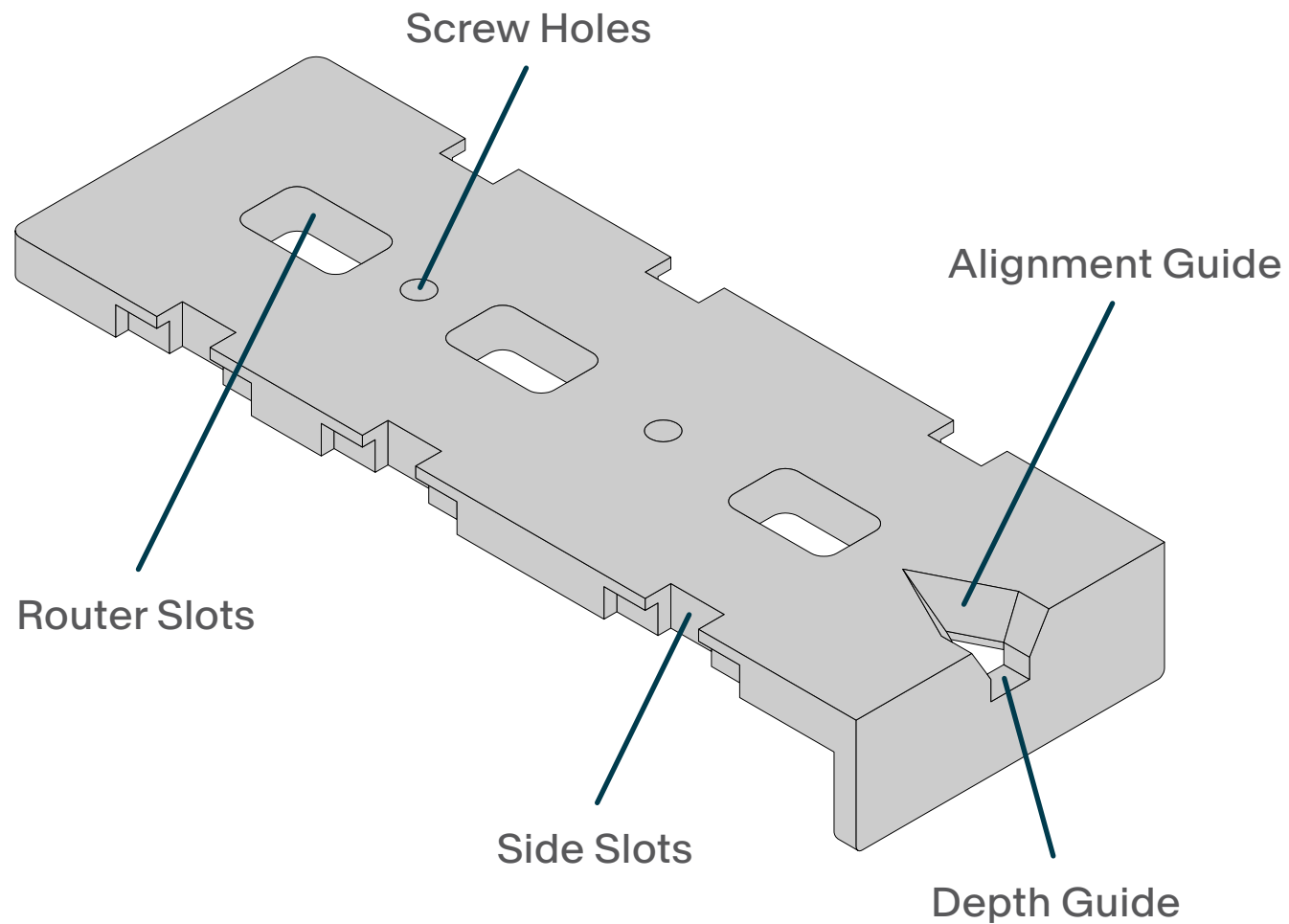


SHORT SLOT JIG



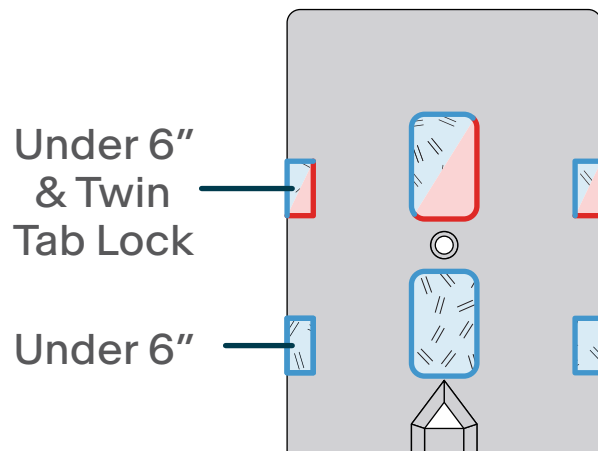
STANDARD SLOT JIG

3.2 SLOT JIG COMPONENTS

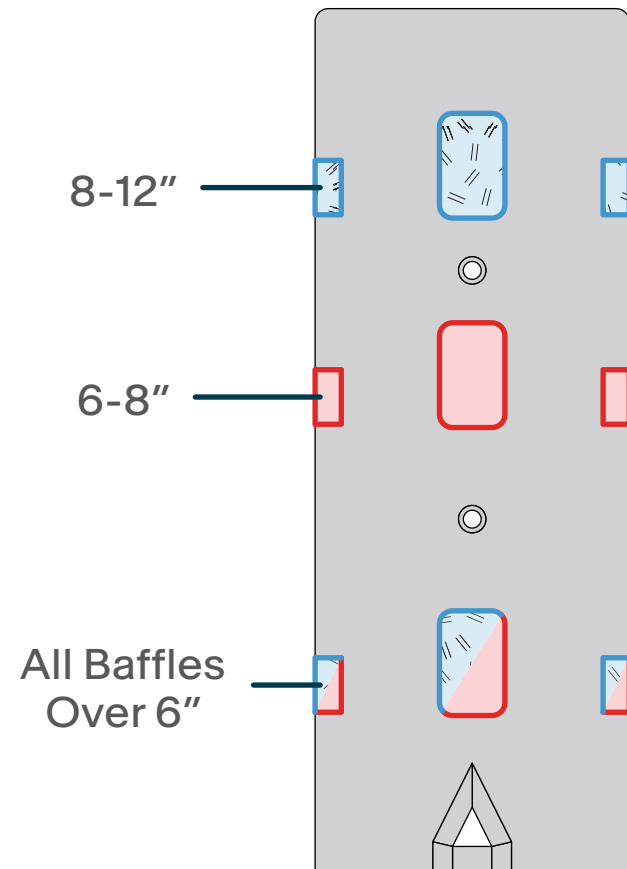


3.3 SLOT JIG - SLOTS

- Slots correspond to baffle heights
- Only cut the slots necessary for the height of the baffles being used

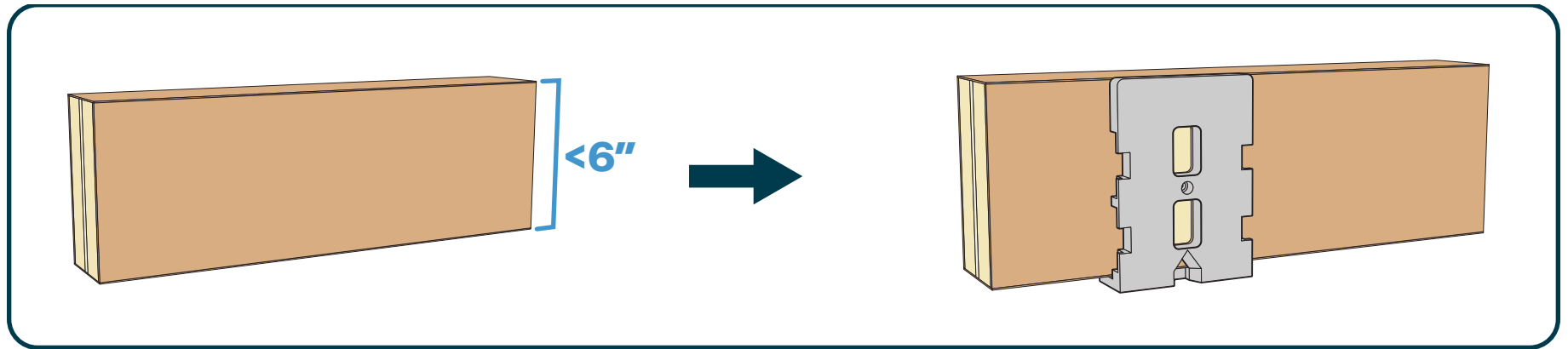


SHORT SLOT JIG

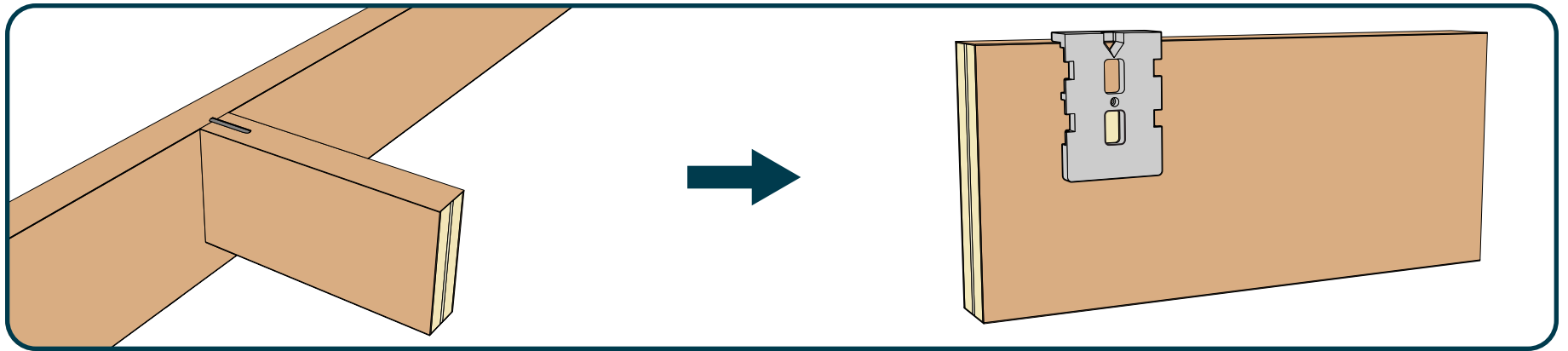


STANDARD SLOT JIG

3.4 SHORT SLOT JIG

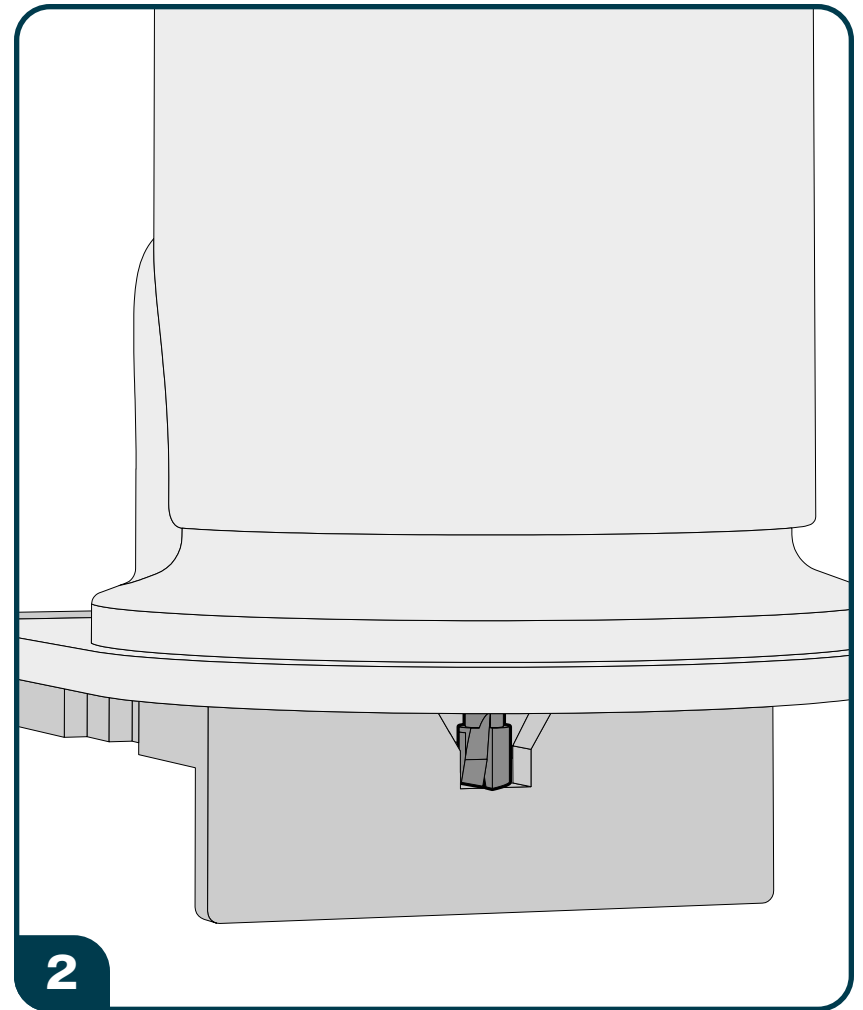
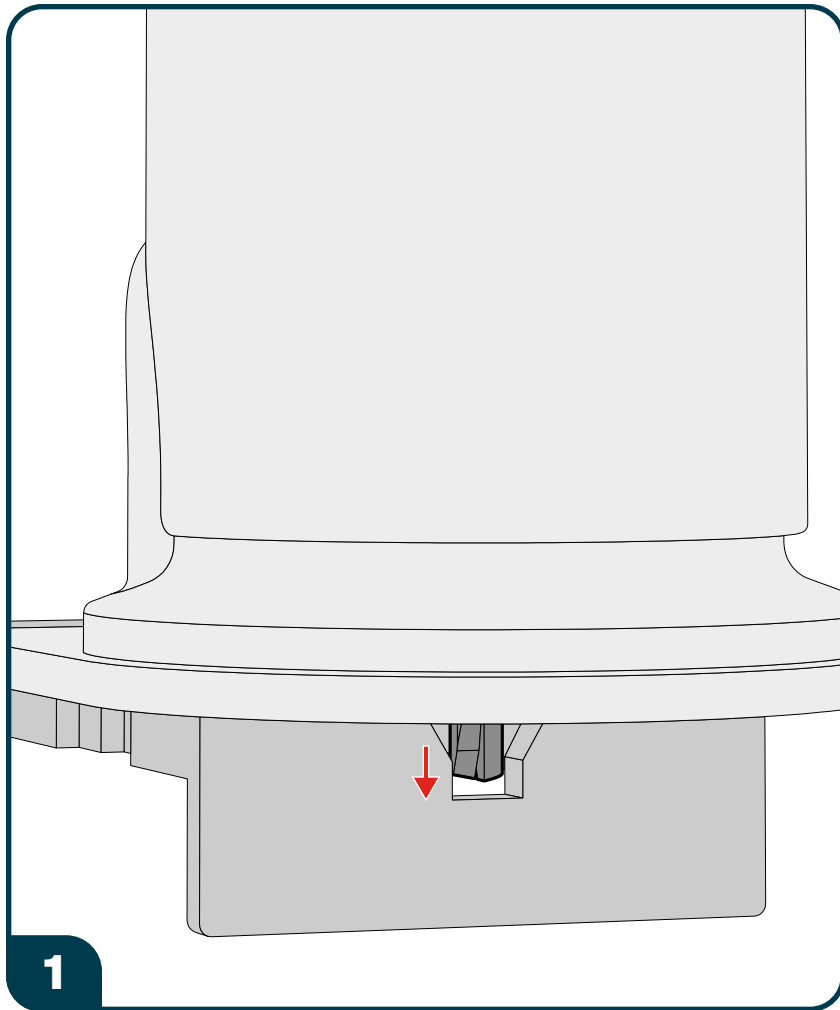


For baffles under 6" tall, align Jig at bottom and cut both slots



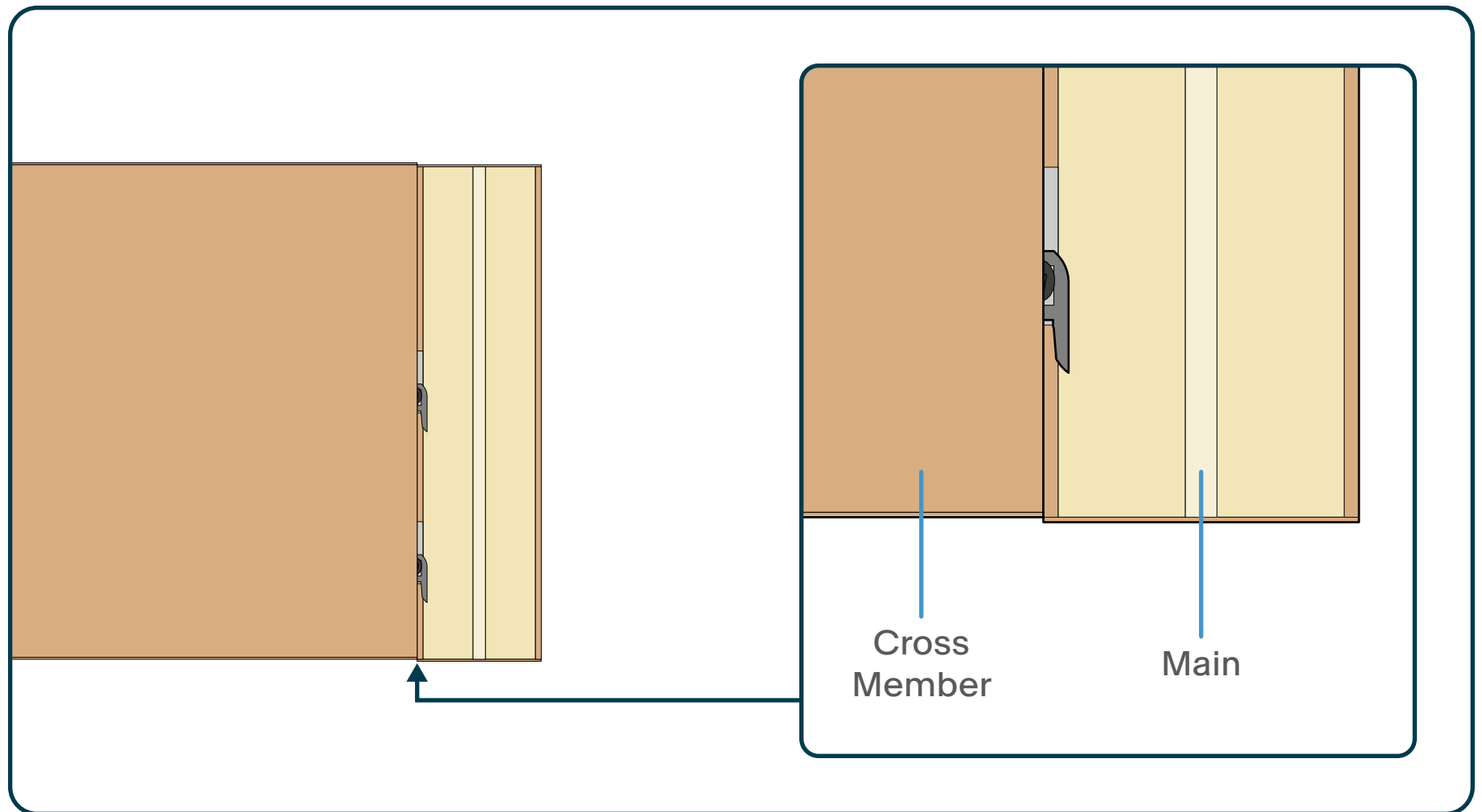
For Cross Members shorter than Mains, align Jig at top and cut lower slot

3.5 SETTING ROUTER DEPTH



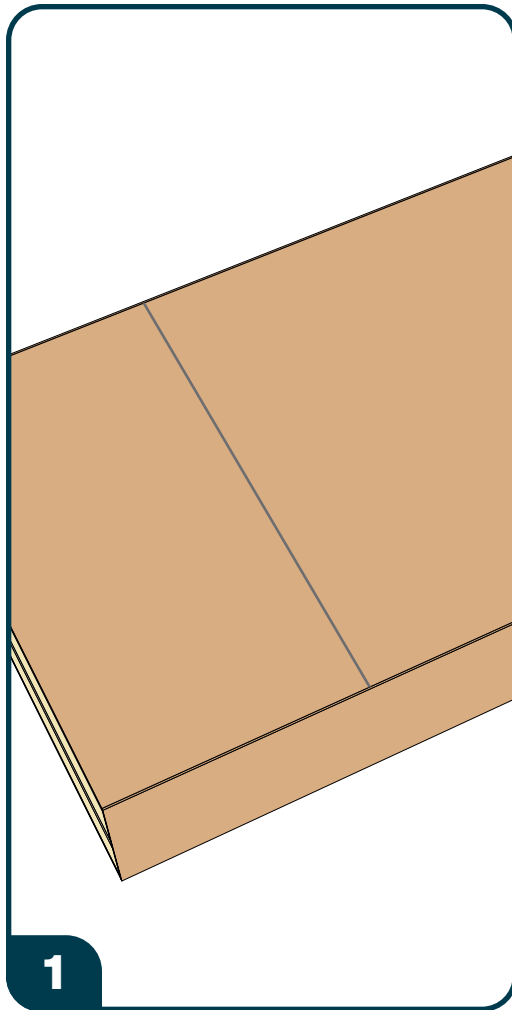
Use Depth Guide on Slot Jig to set provided 1/4" pattern bit to proper cutting depth

3.6 SLOT JIG OFF SET

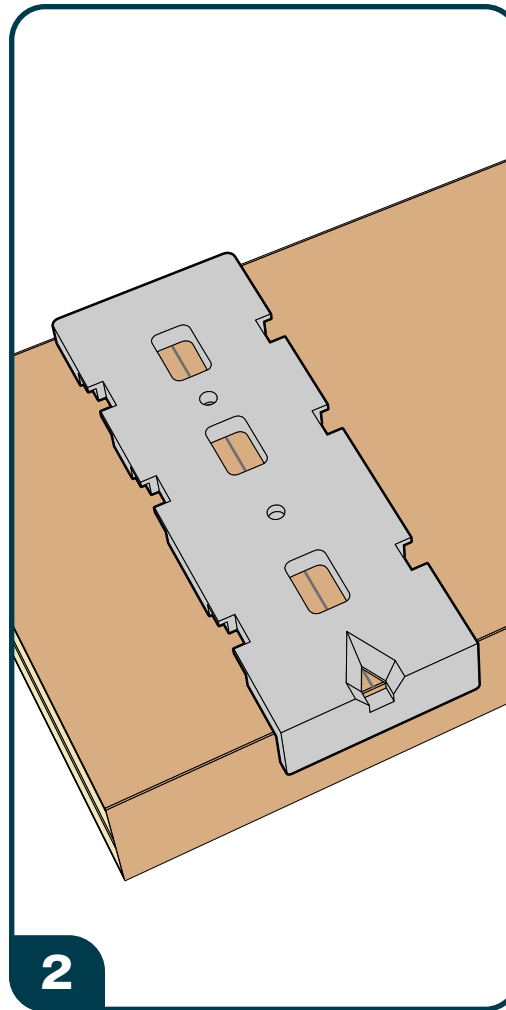


Slot Jigs are designed to align bottom of Cross Members $\frac{1}{32}$ " higher than the bottom of Mains to prevent core material from being visible.

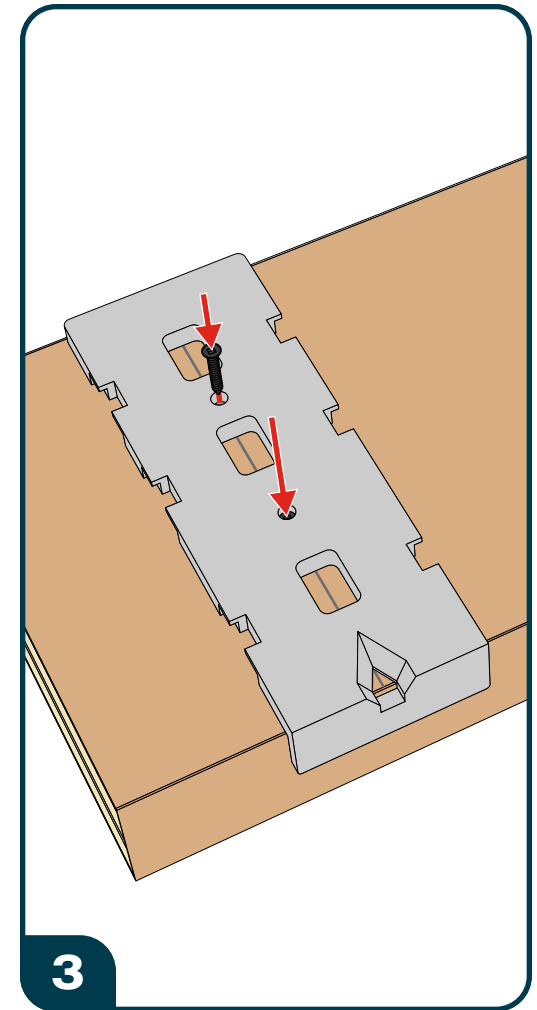
4.1 | SLOT JIG ALIGNMENT



Mark center of Cross Member on Mains

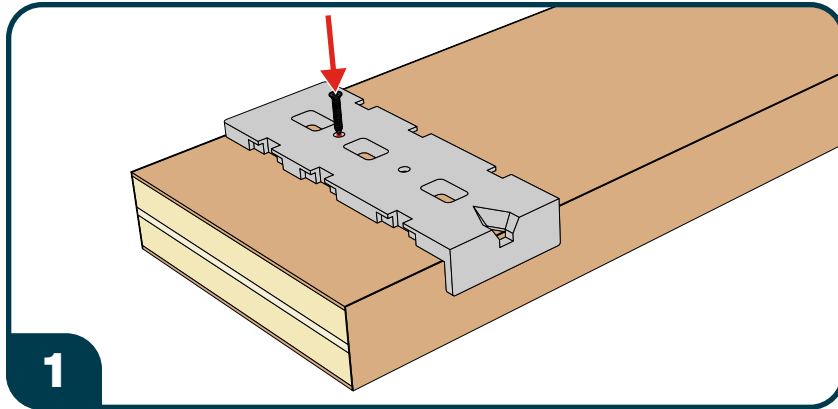


Align Jig with mark and bottom of Baffle

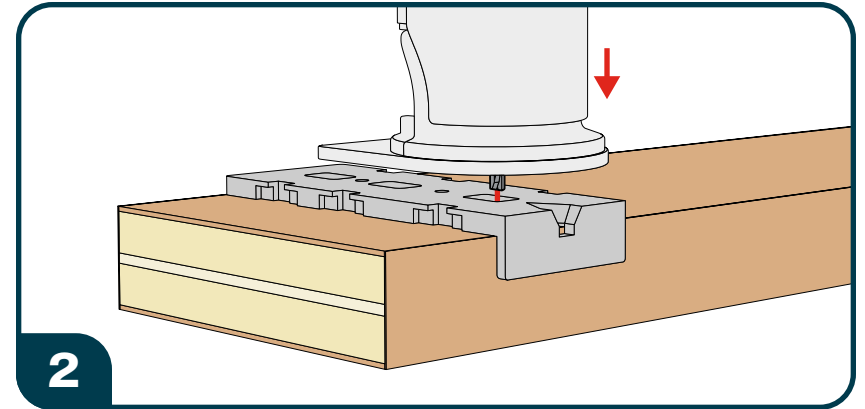


Attach with #7 Screws

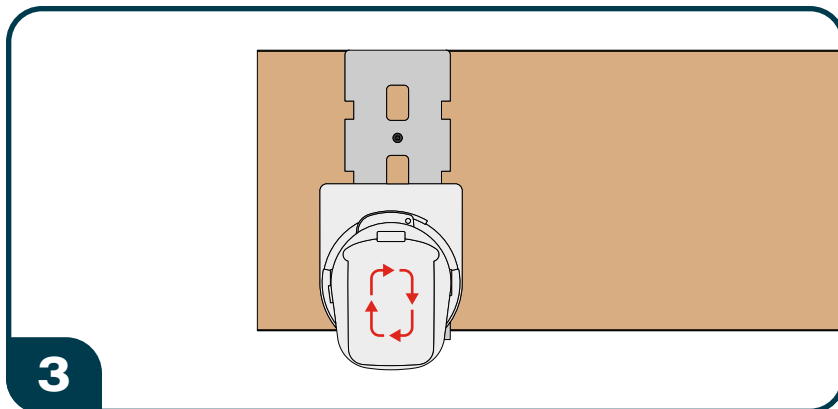
4.2 CUTTING SLOTS



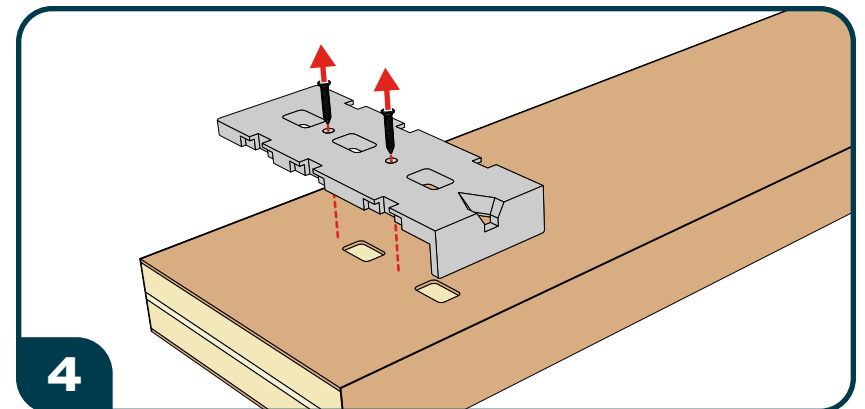
Attach Slot Jig with #7 screws



Plunge router into center of hole

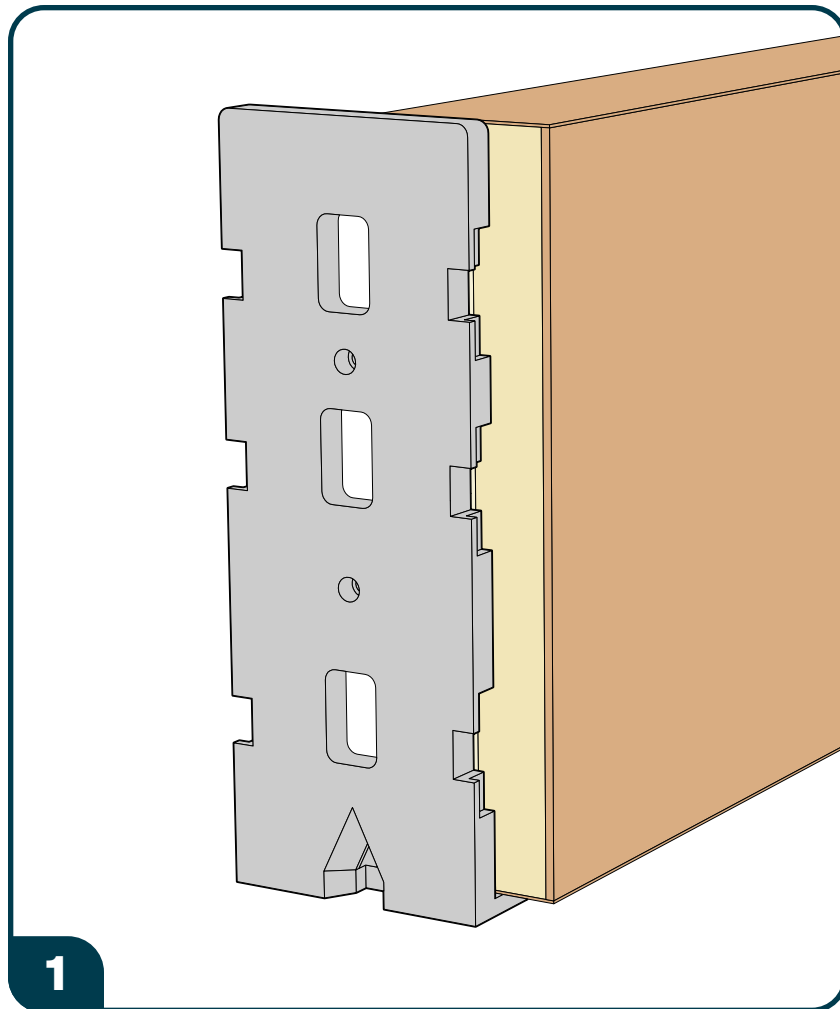


Trace hole with router bit

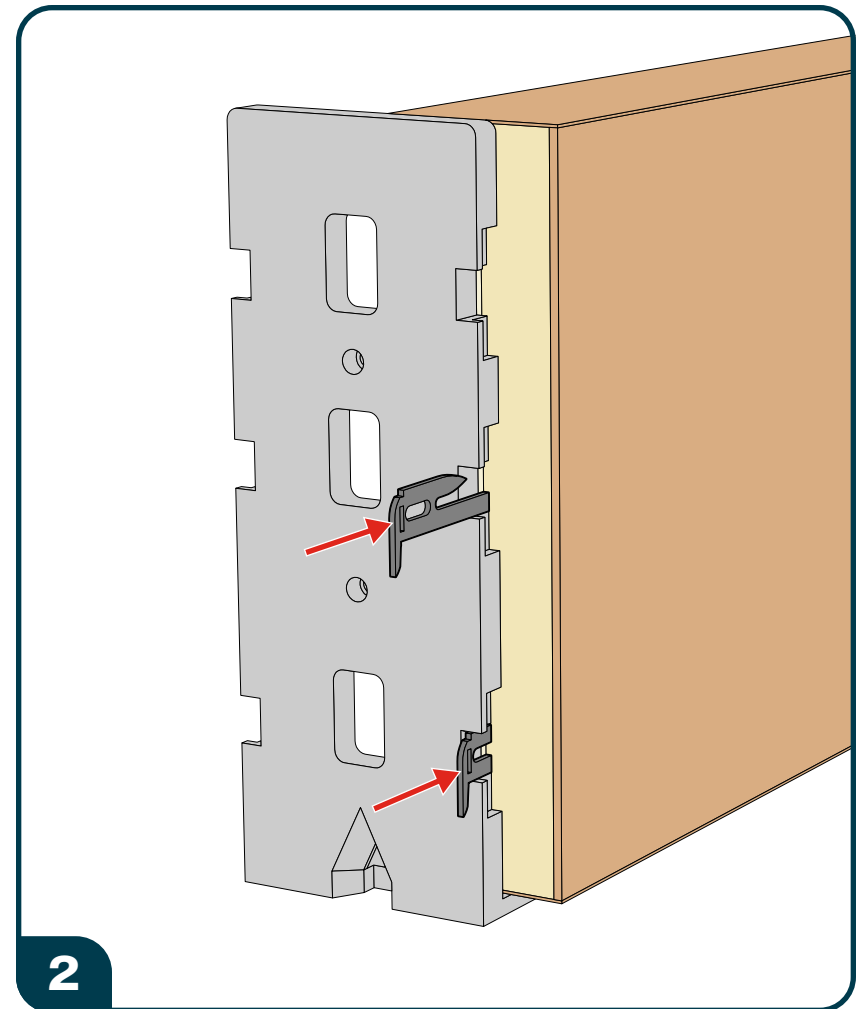


Remove screws and Slot Jig

5.1 INSTALLING TAB LOCKS

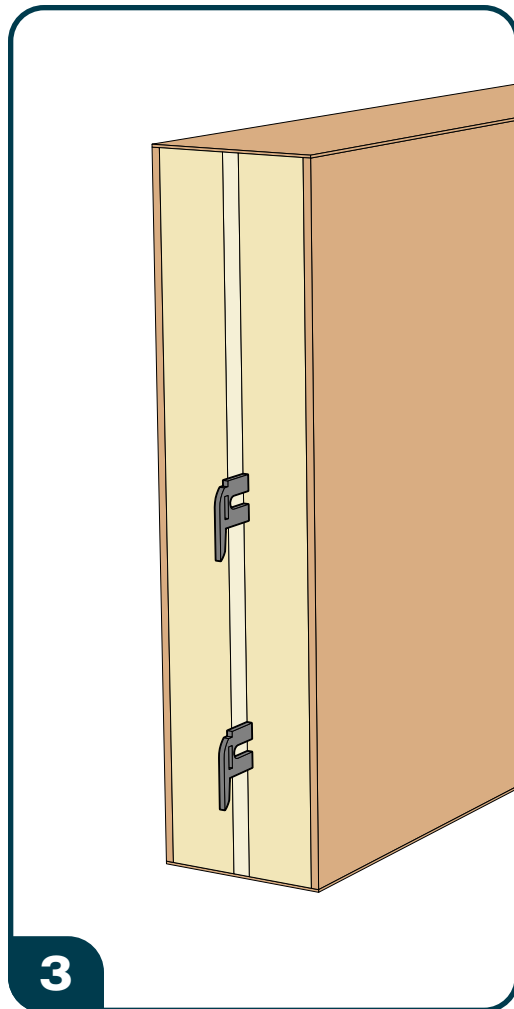


Align Slot Jig to end of baffle and septum

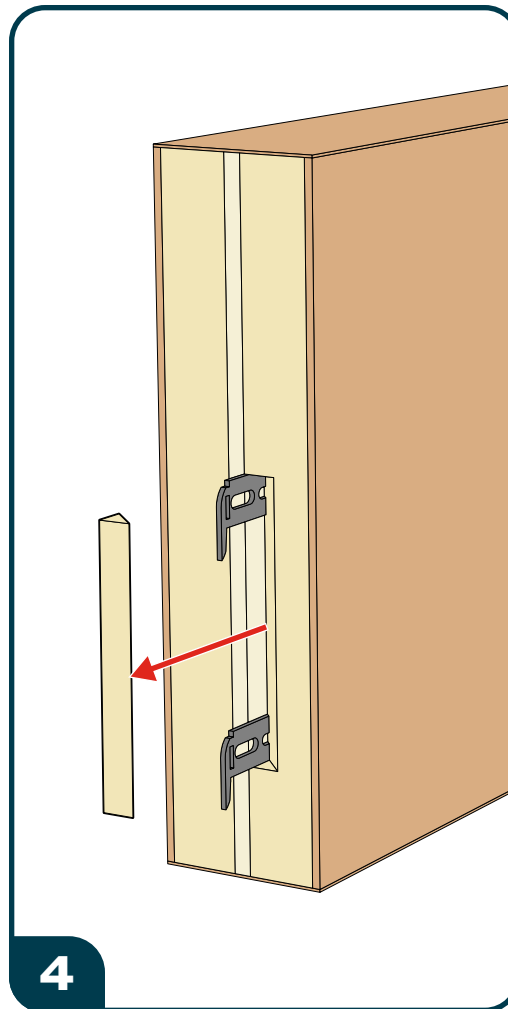


Insert Tab Locks flush with septum using Slot Jig as guide

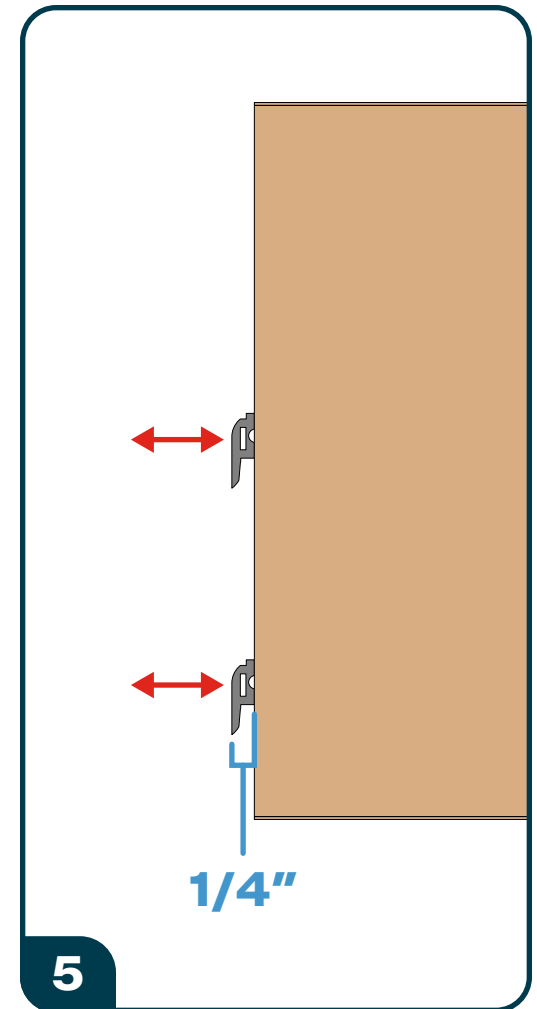
5.1 INSTALLING TAB LOCKS



Remove Slot Jig

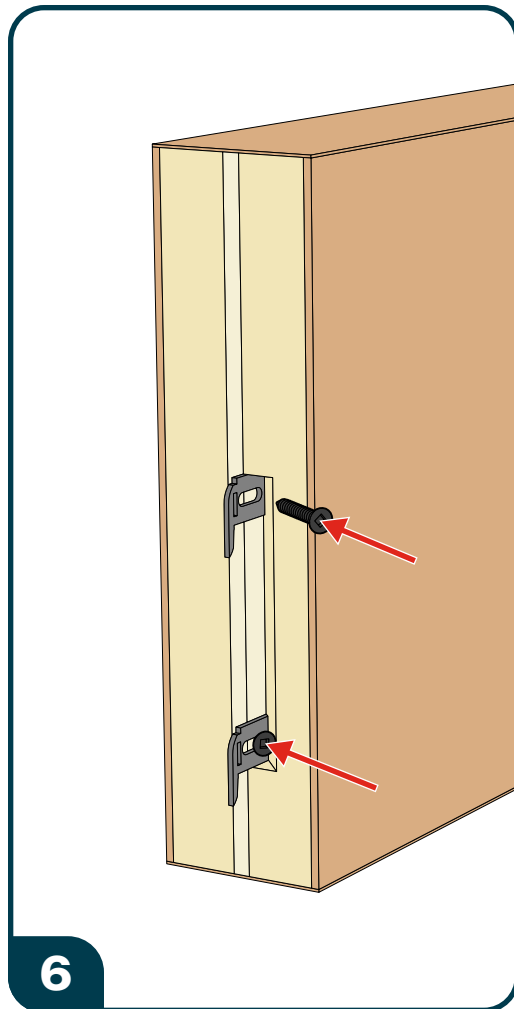


Cut away core around Tab Lock to reveal screw slot

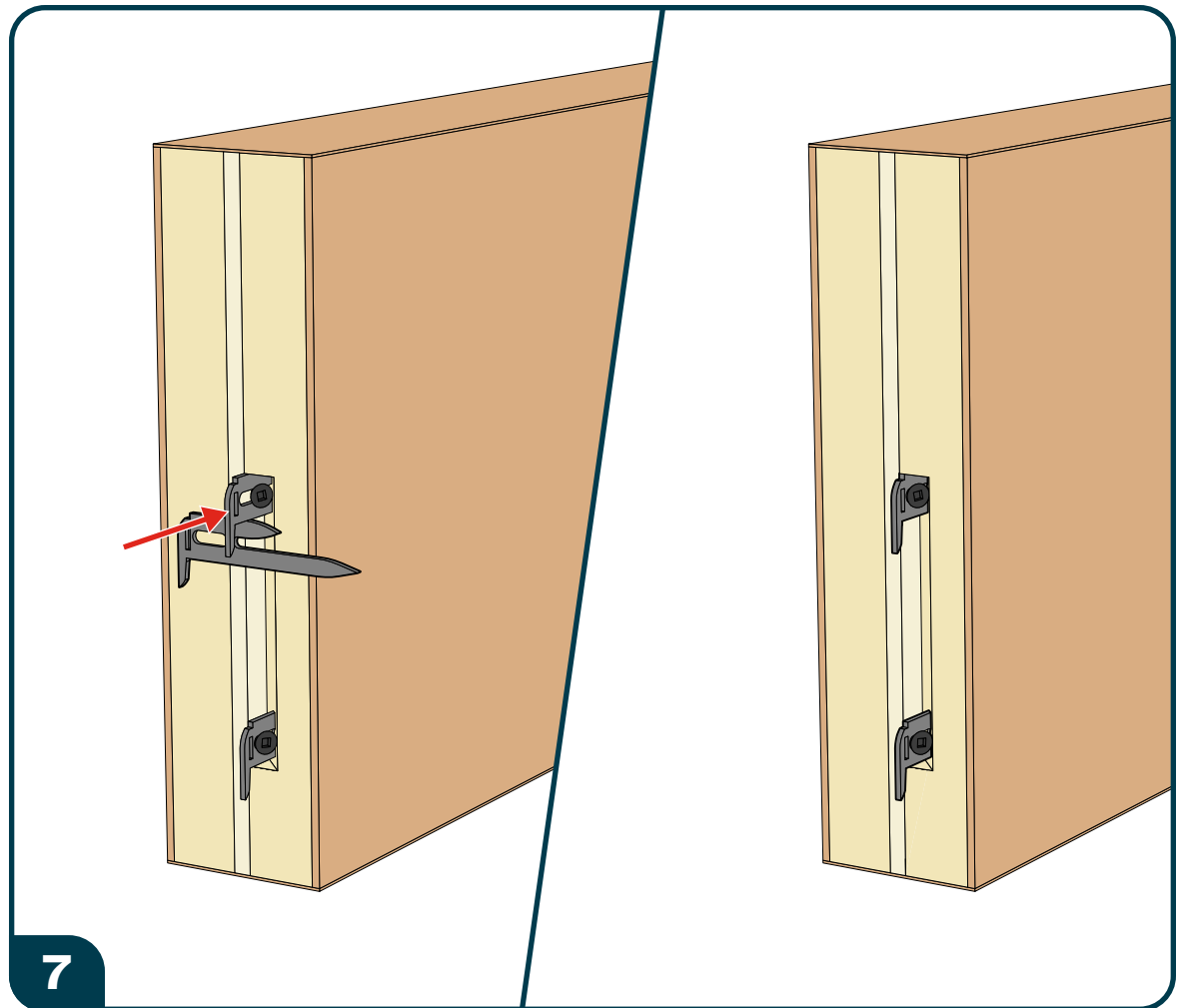


Adjust Tab Locks so they extend 1/4" past end

5.1 INSTALLING TAB LOCKS

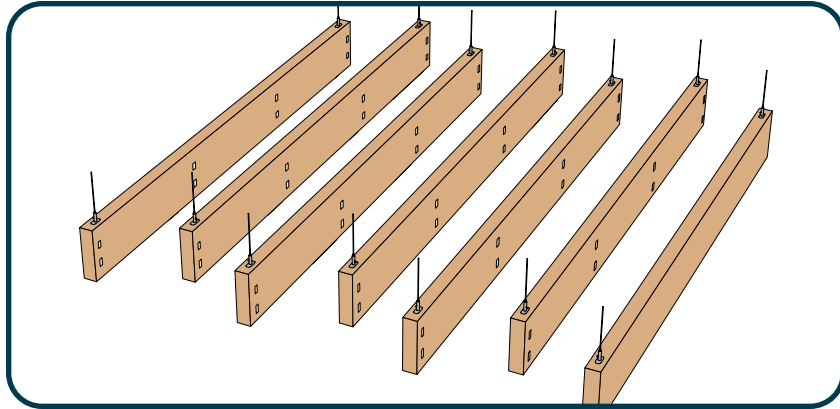


Attach to septum with
#7 screws

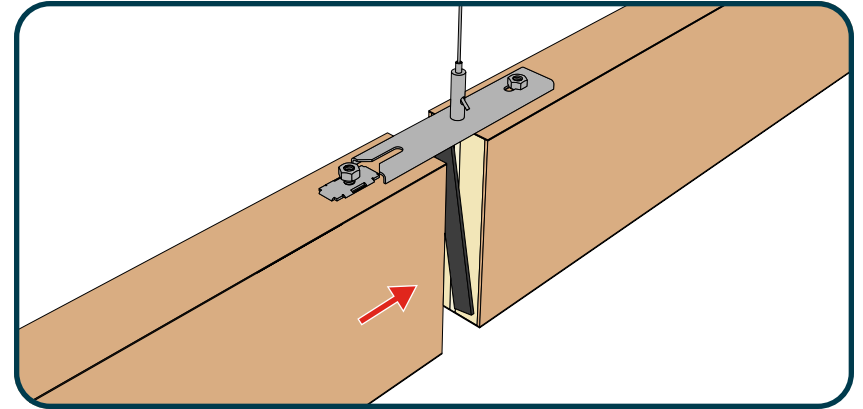


Position an extra Tab Lock under hook to use as a spacer
for pushing Tab Locks to proper depth

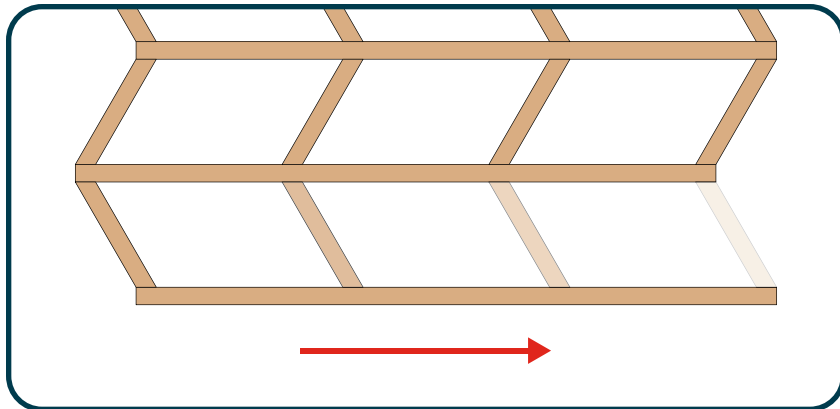
6.1 HANGING BAFFLES



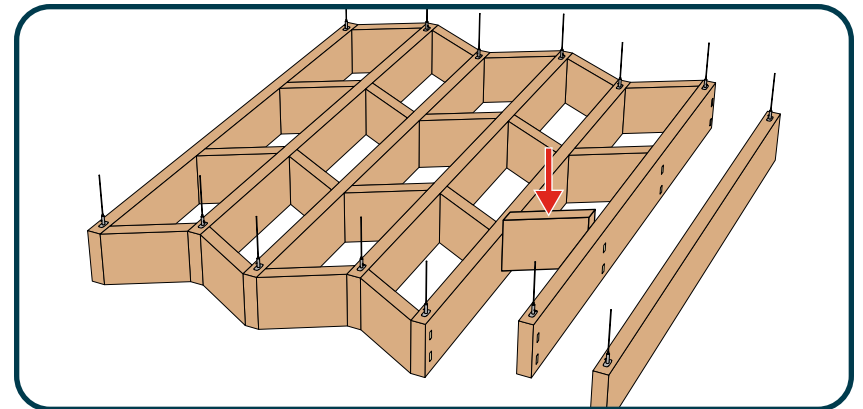
Hang Mains following Baffle Install Instructions ensuring correct location and orientation



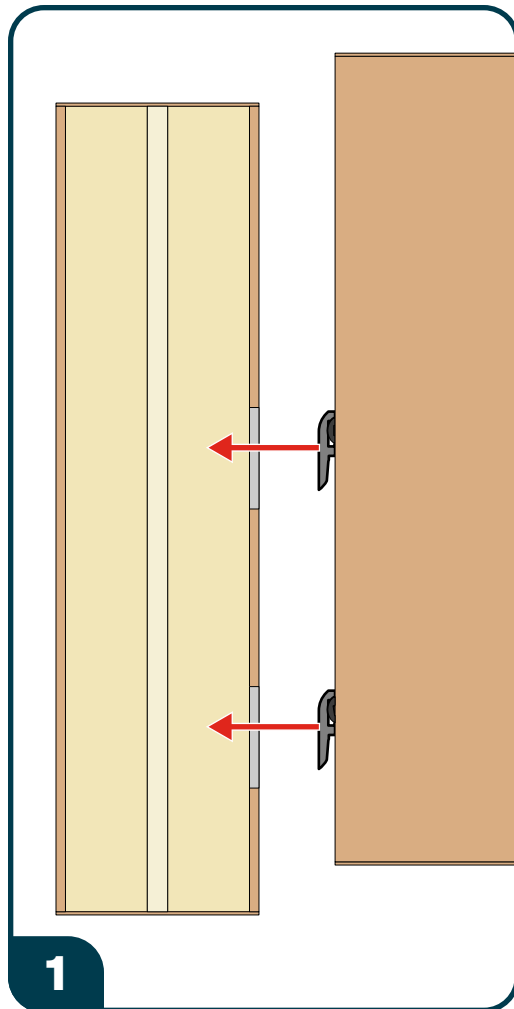
Use Bridge Plates with Dual Lock for Mains aligned end to end



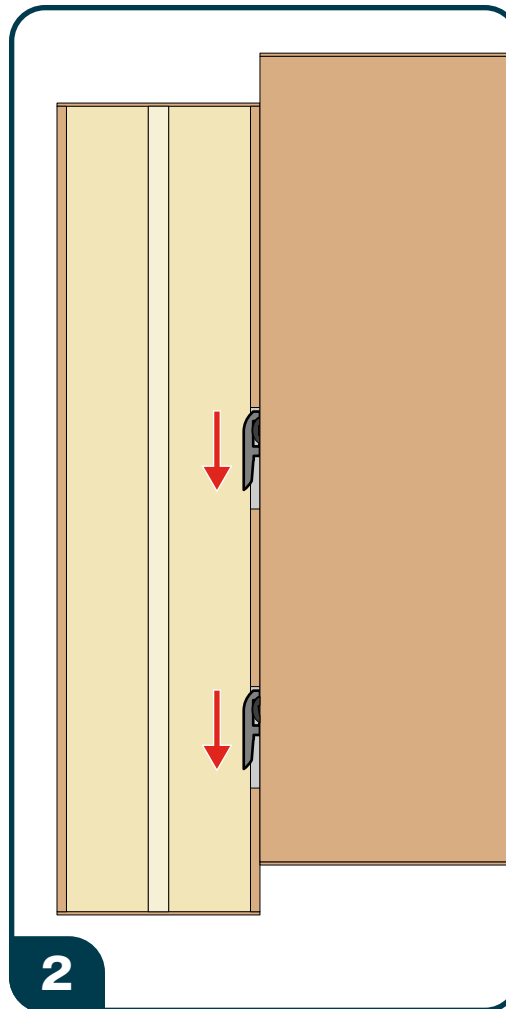
Install Cross Members moving from one end of the Mains to the other



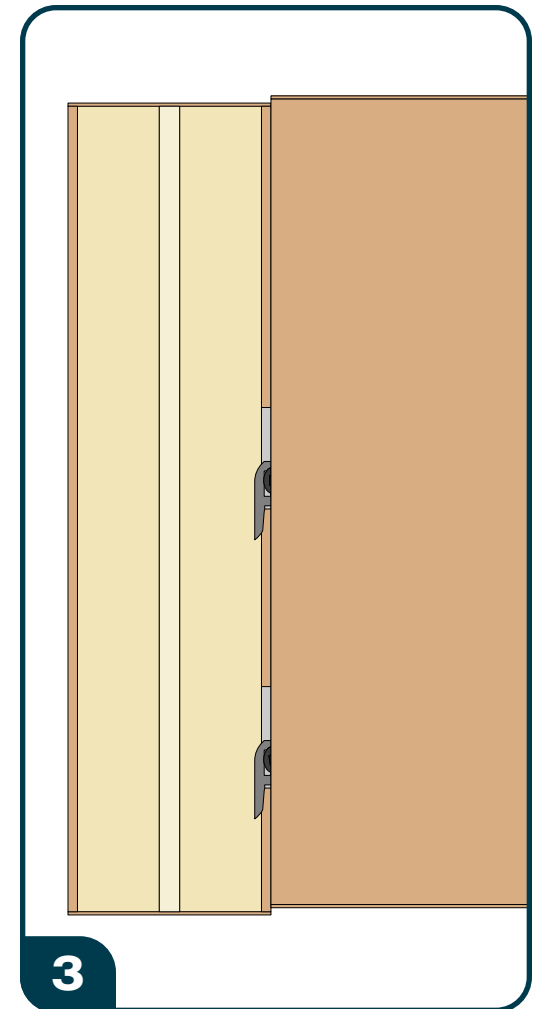
6.2 ATTACHING CROSS MEMBERS



Align Tab Locks to slots

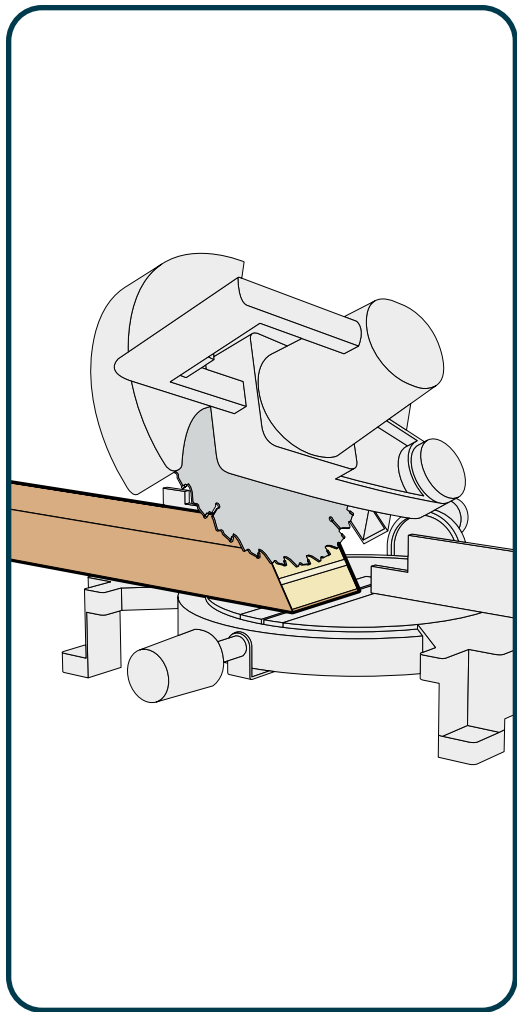


Press tabs into slots

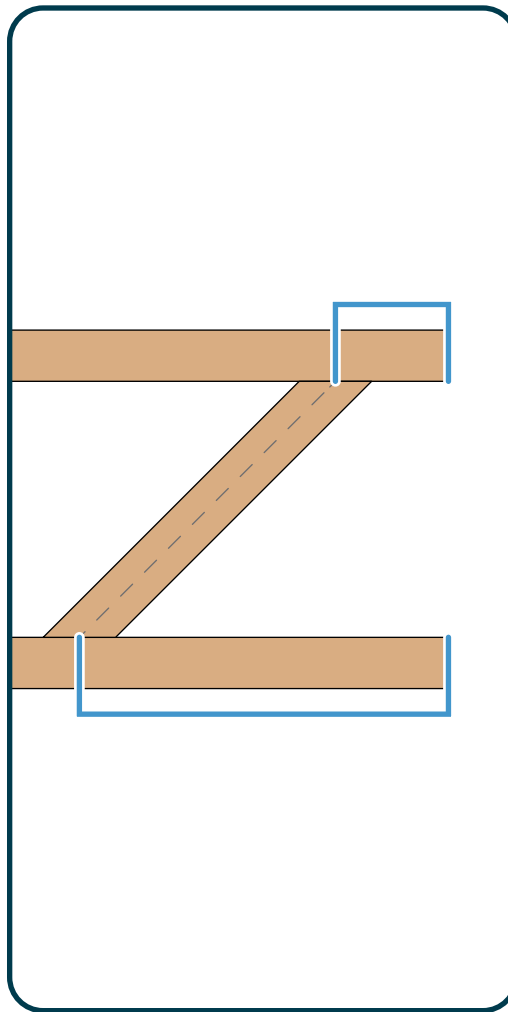


Push down to lock in place

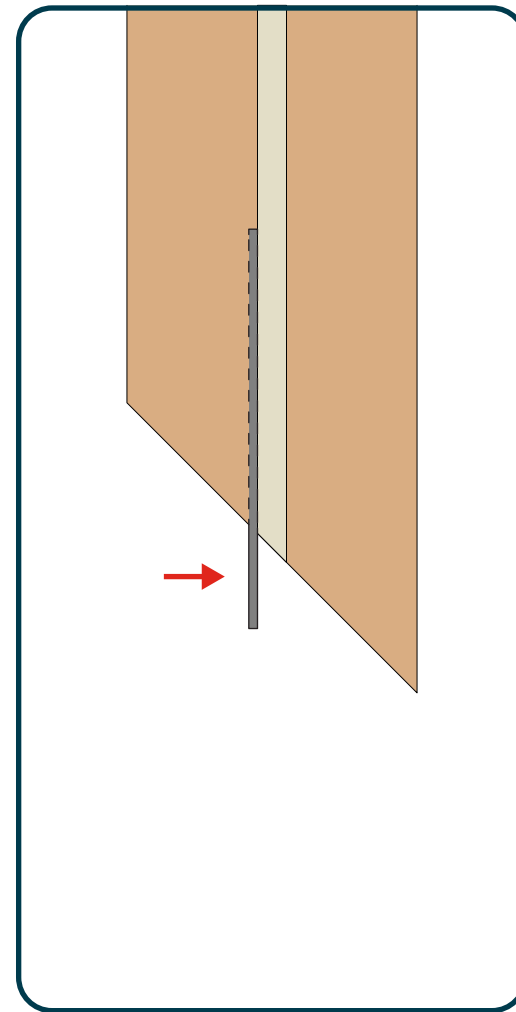
7.1 ANGLED BAFFLES



Cut angles using miter saw

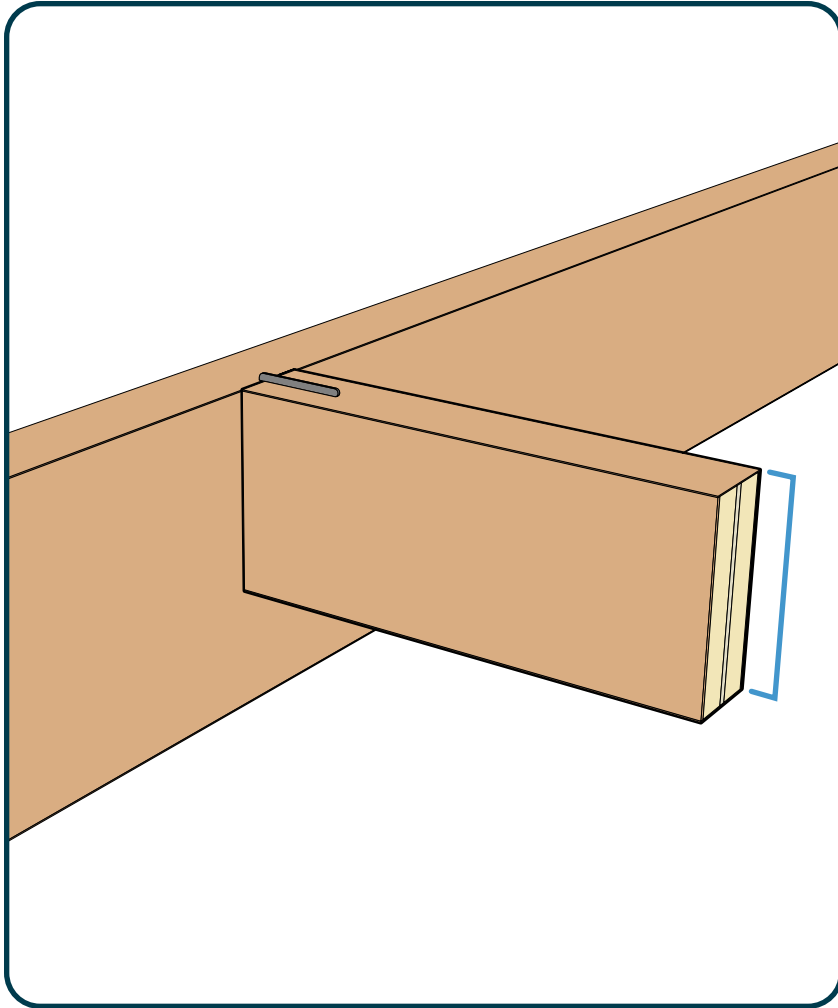


Slots should be placed at center of angled baffle

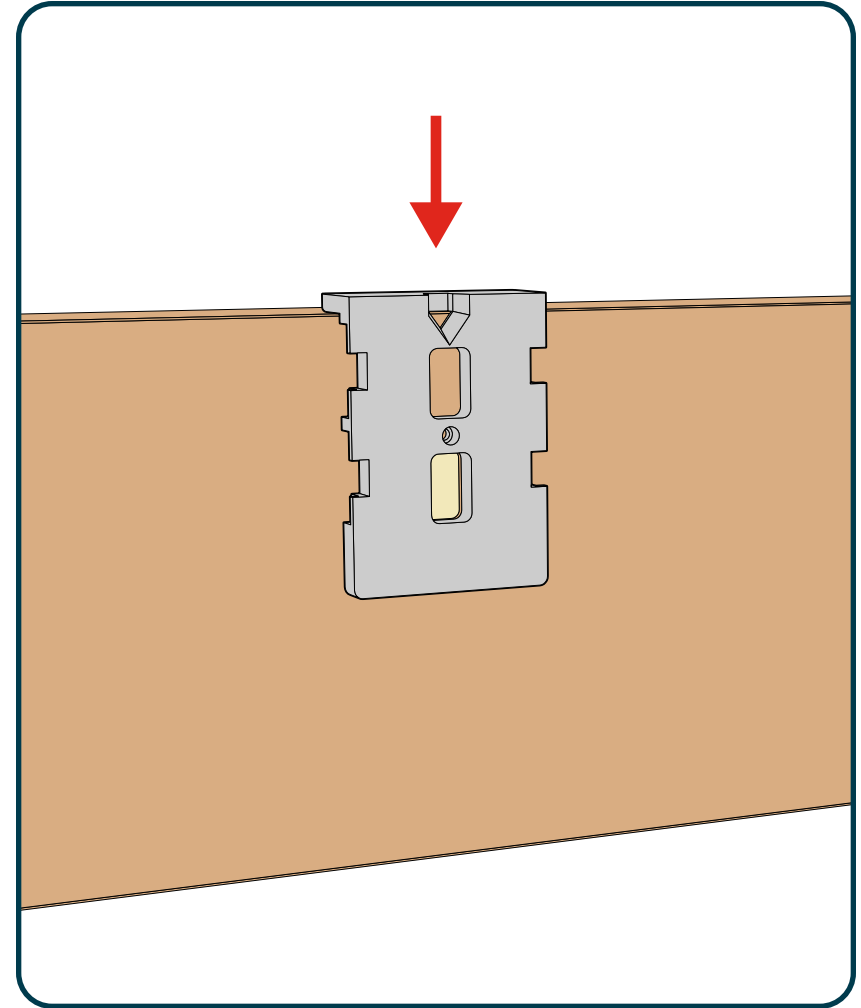


Install Tab Locks at short side of septum

8.1 TWIN TAB LOCK

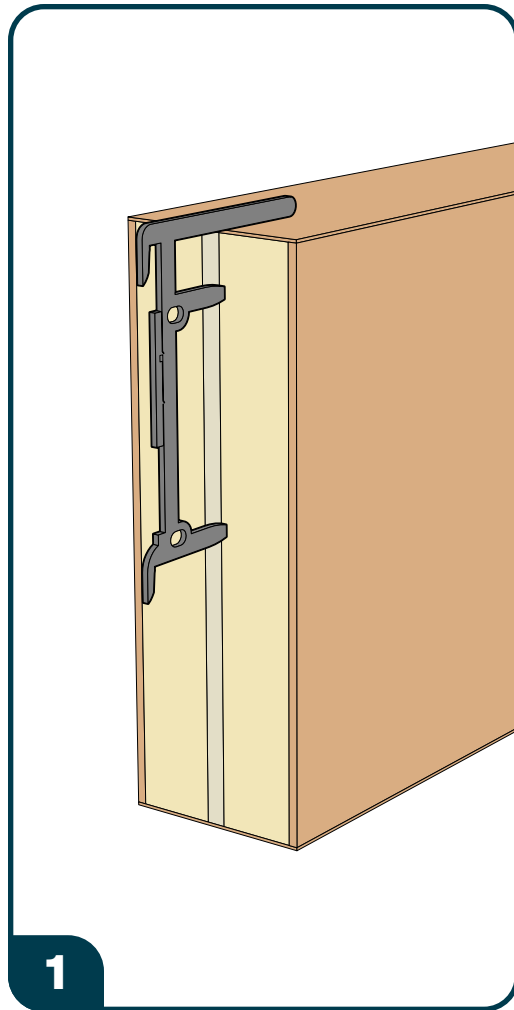


Twin Tab Locks are used when Cross Members are shorter in height than Mains

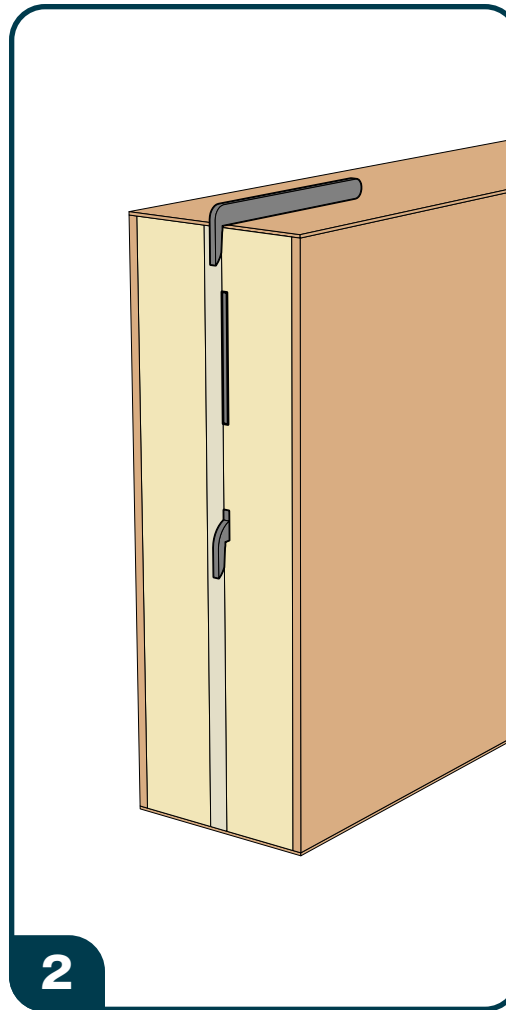


Align Short Slot Jig at top of Main and cut lower slot

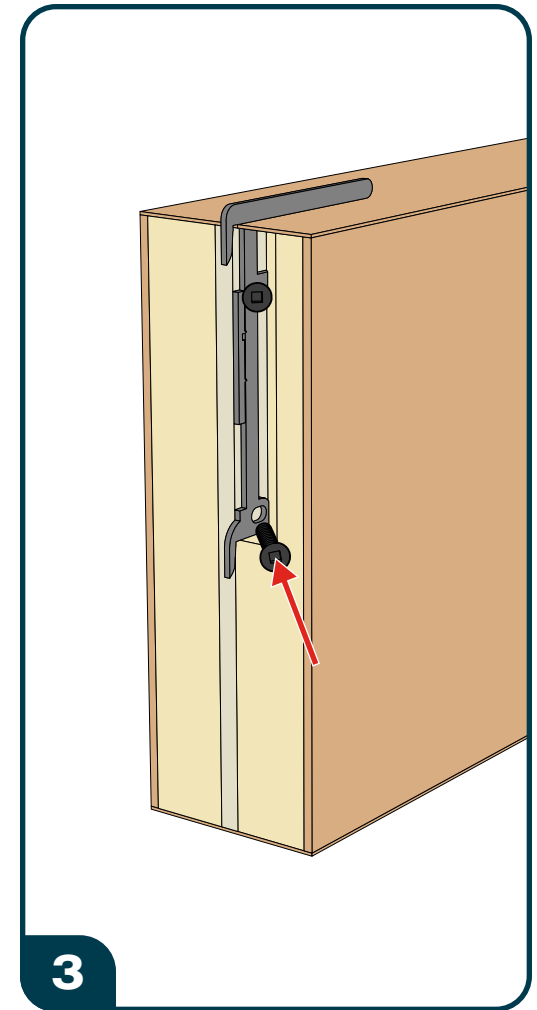
8.2 INSTALLING TWIN TAB LOCK



Insert Twin Tab Lock flush with septum, aligning flange to top of baffle

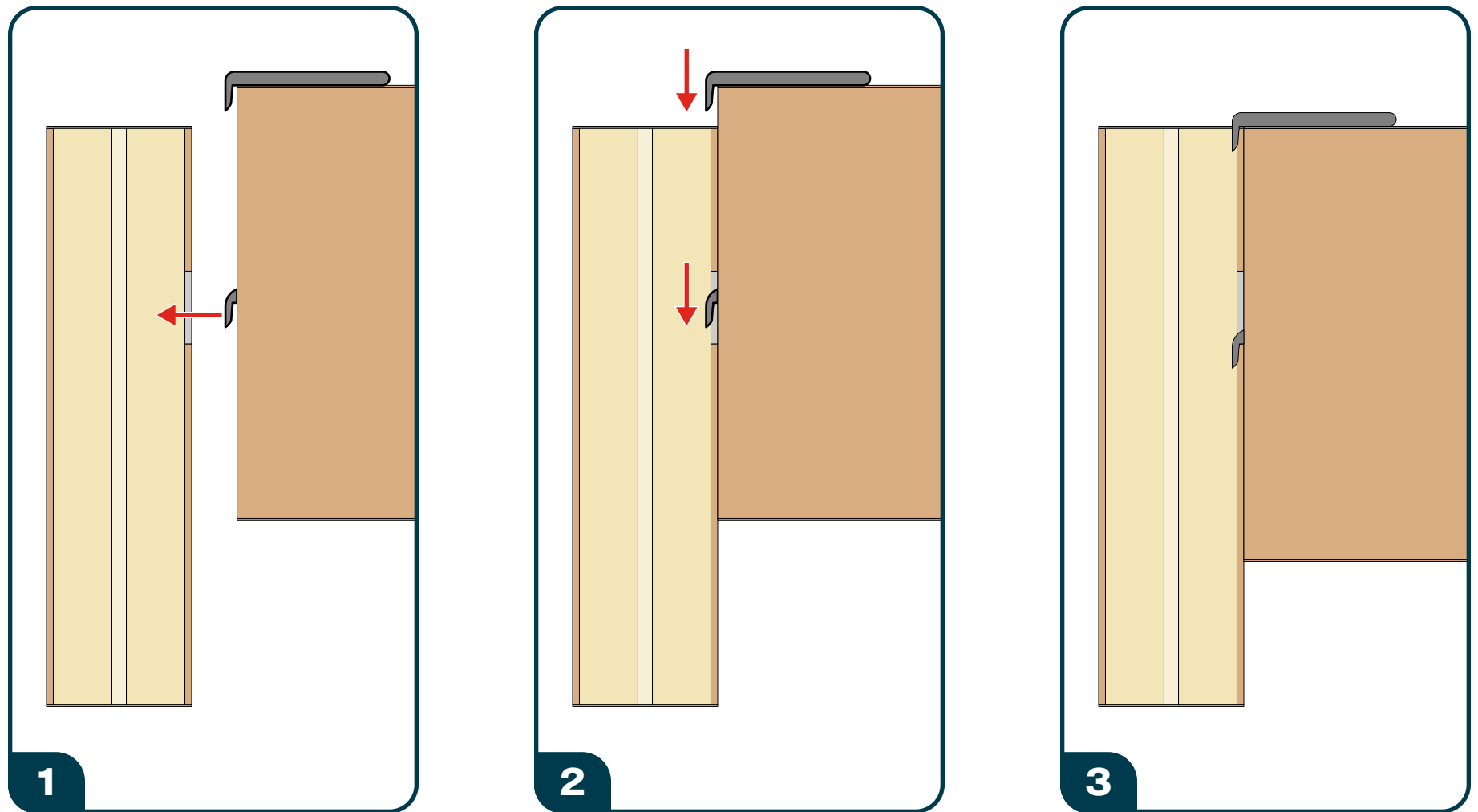


Push in until tab on back sits flush with end of baffle



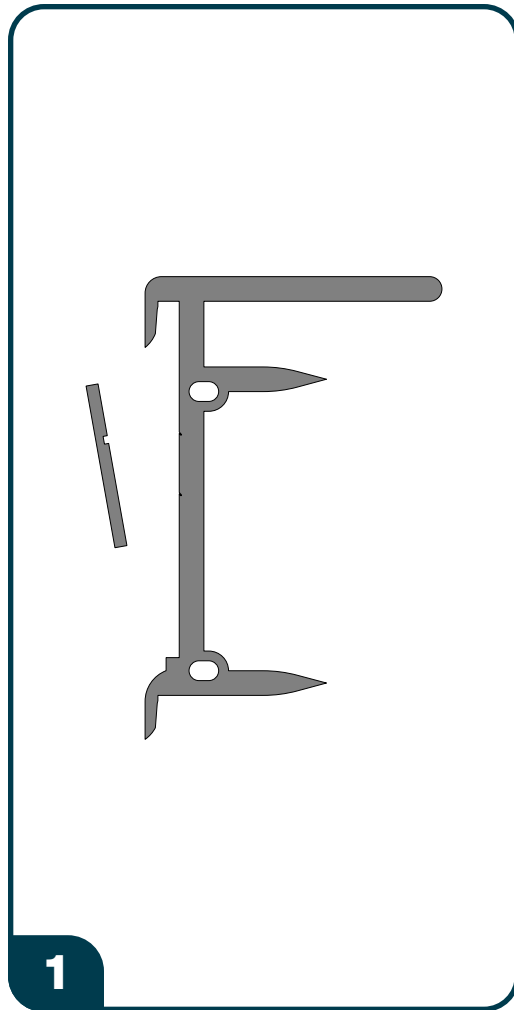
Remove core material and screw in place

8.3 ATTACHING TWIN TAB LOCK

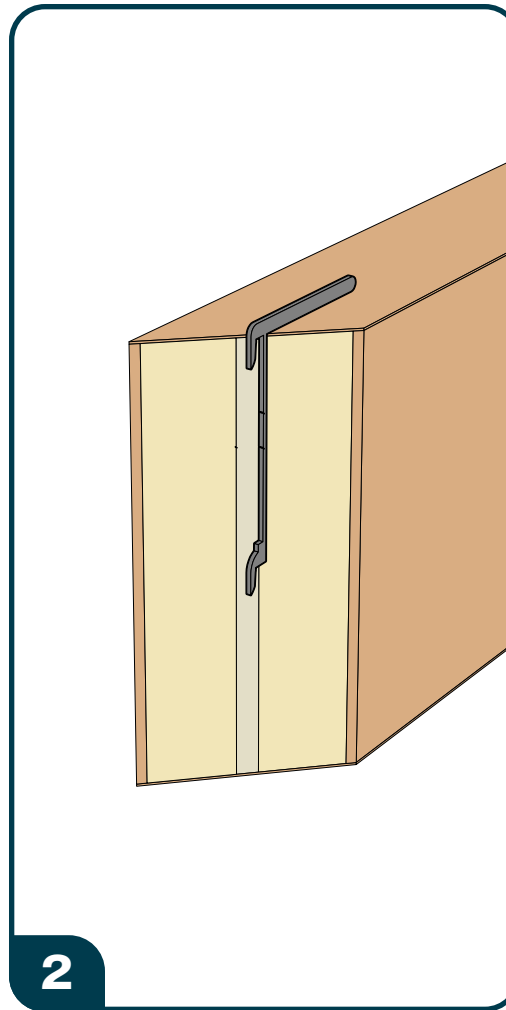


Attach to Mains, piercing edgebanding with upper tab

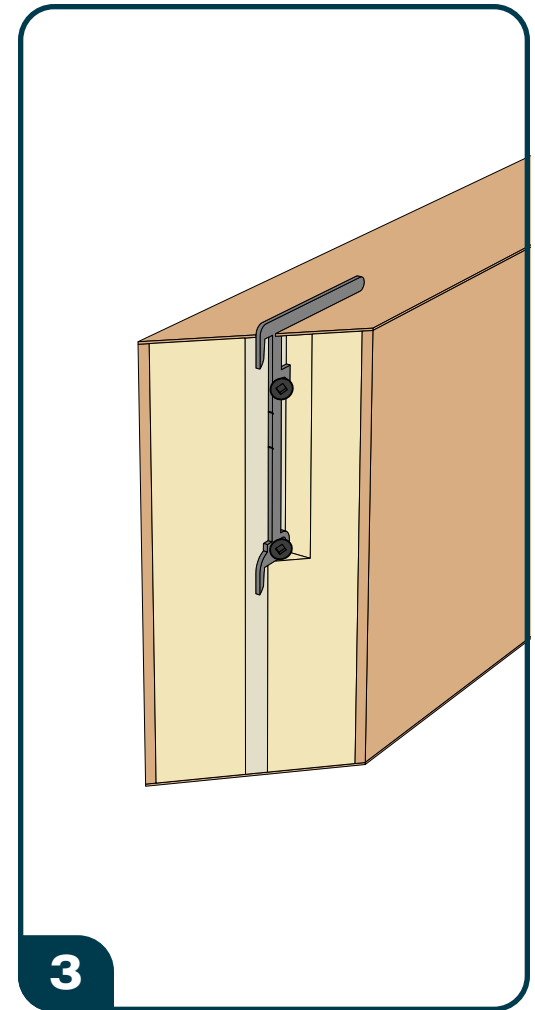
8.4 TWIN TAB LOCK & ANGLES



Break side tab off of Twin
Tab Lock

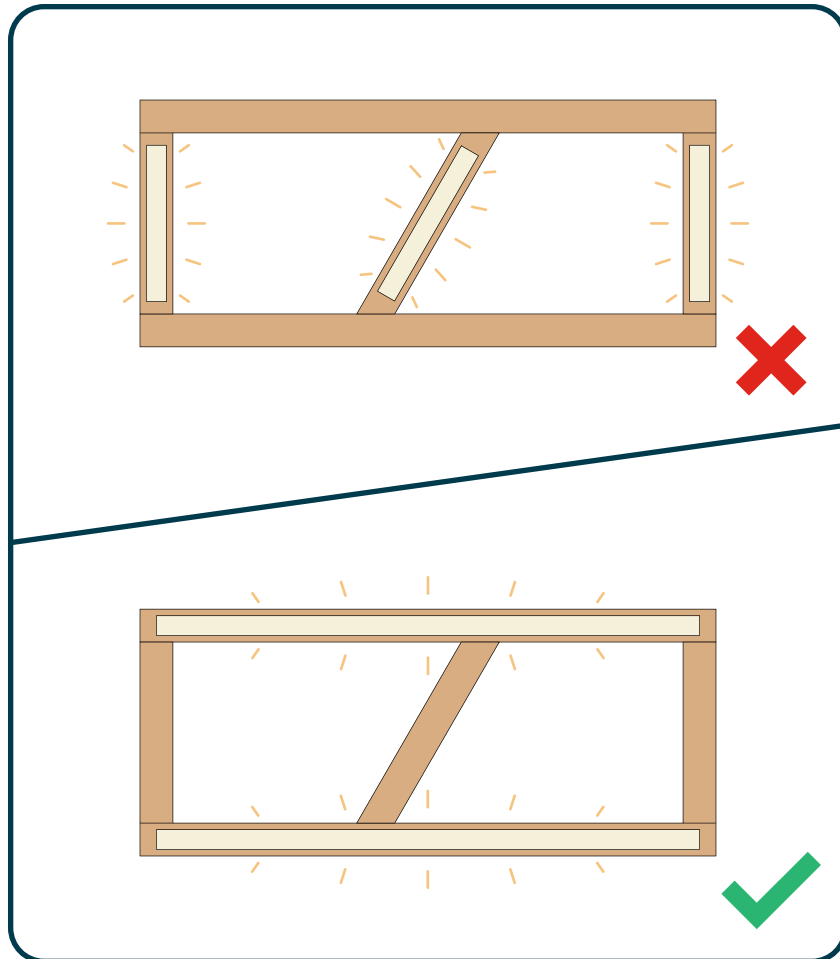


Insert and push into
place until back is flush
with septum

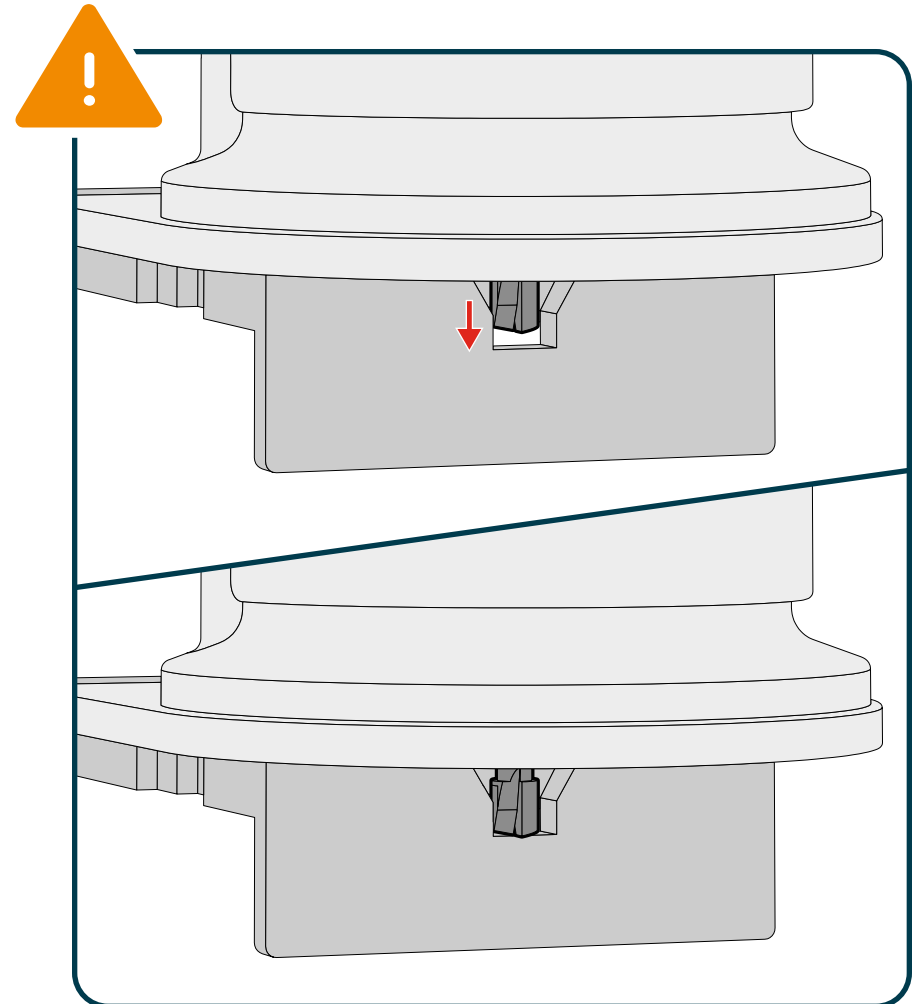


Remove core material
and screw in place

9.1 RENSA LIT BAFFLES



Rensa Lit Baffles can only be Mains,
not Cross Members

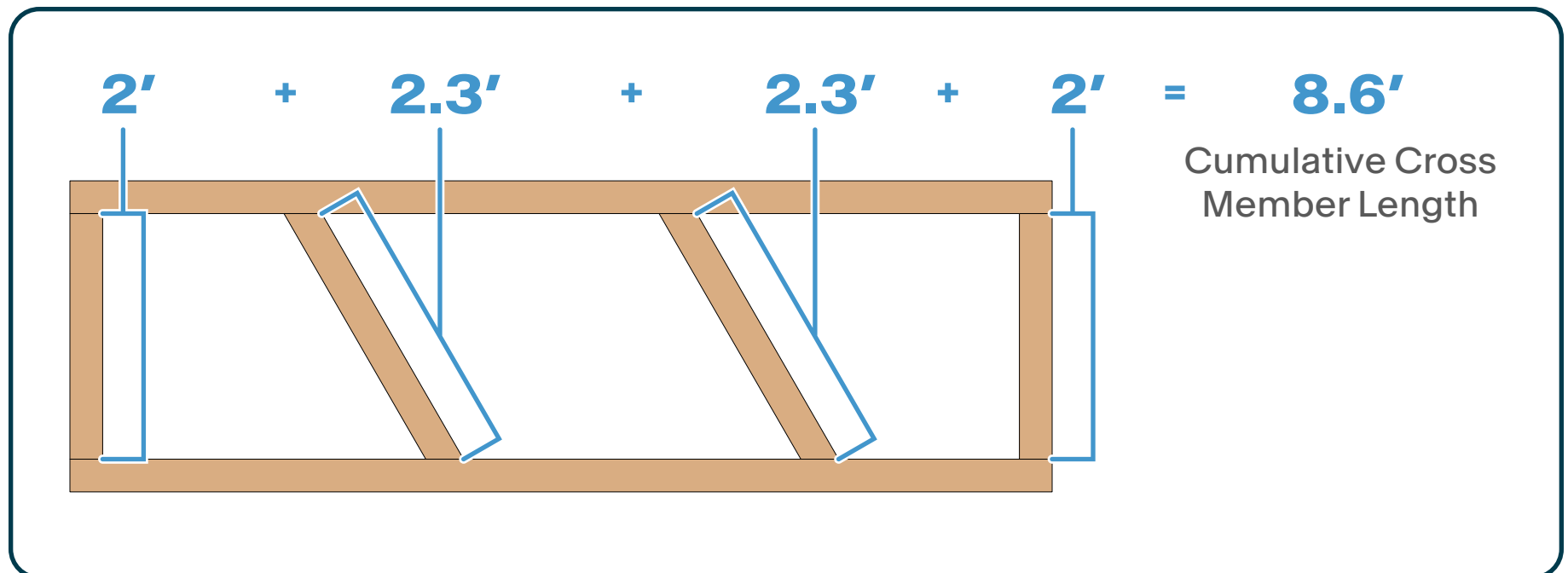


Ensure router bit is set to proper cutting
depth to avoid internal electronics.
Reference Section 3.5 for instructions.

10.1 CROSS MEMBER LENGTHS

The tables on the following pages are used to determine the cumulative allowable Cross Member length that can go between two Mains without additional support.

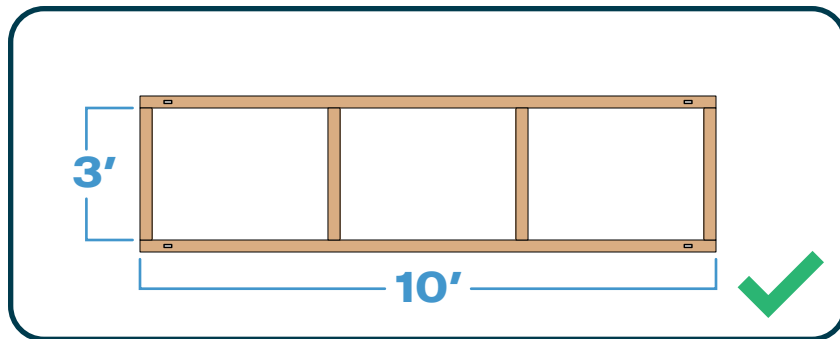
Any combined Cross Member length over these values must be supported by additional X-Hangers placed on the Cross Members.



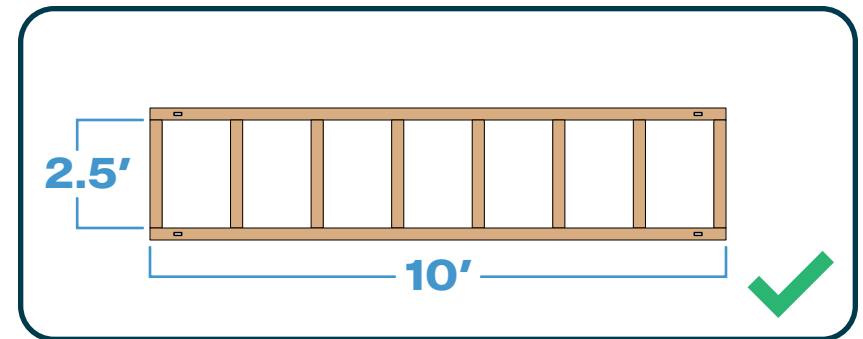
10.2 CROSS MEMBER LENGTHS

EXAMPLE

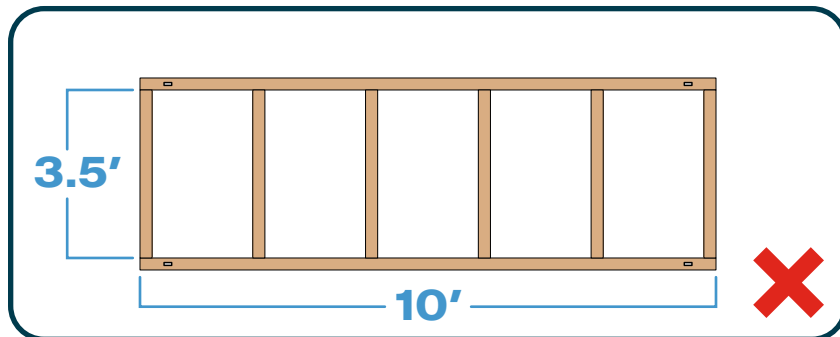
If the array is designed to use 10' Mains that are 18" tall, and Cross Members that are 12" tall, there can be up to 20' of unsupported Cross Member between each pair of Mains.



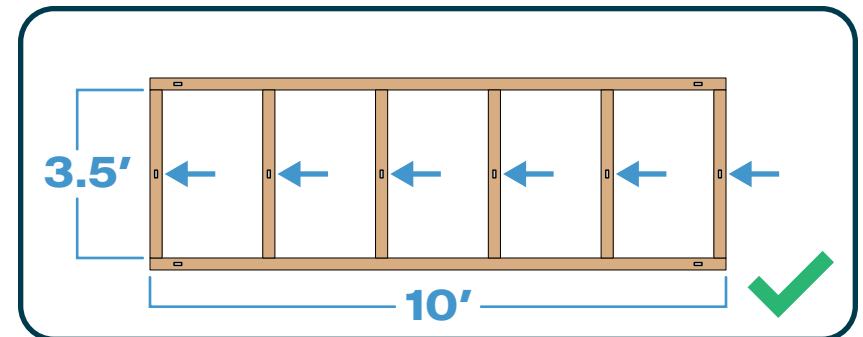
Total Cross Member Length: 12'



Total Cross Member Length: 20'



Total Cross Member Length: 21'
Additional X-Hangers needed



Total Cross Member Length: 21'
Additional X-Hangers on Cross Members

10.3 10' MAIN TABLE

10' Mains Total Allowable Cross Member Length (ft)										
		Main Height								
		4"	6"	8"	10"	12"	14"	16"	18"	20"
Cross Member Height	4"	94	90	84	80	74	70	64	60	54
	6"	---	60	56	52	50	46	42	40	36
	8"	---	---	42	40	37	35	32	30	27
	10"	---	---	---	32	30	28	26	24	22
	12"	---	---	---	---	25	23	21	20	18
	14"	---	---	---	---	---	20	18	17	16
	16"	---	---	---	---	---	---	16	15	14
	18"	---	---	---	---	---	---	---	13	12
	20"	---	---	---	---	---	---	---	---	11

10.4 8' MAIN TABLE

8' Mains Total Allowable Cross Member Length (ft)										
		Main Height								
		4"	6"	8"	10"	12"	14"	16"	18"	20"
Cross Member Height	4"	96	92	88	84	80	76	72	68	64
	6"	---	61	58	56	53	51	48	45	42
	8"	---	---	44	42	40	38	36	34	32
	10"	---	---	---	34	32	30	29	27	26
	12"	---	---	---	---	27	25	24	23	22
	14"	---	---	---	---	---	22	21	20	18
	16"	---	---	---	---	---	---	18	17	16
	18"	---	---	---	---	---	---	---	15	14
	20"	---	---	---	---	---	---	---	---	13

10.5 6' MAIN TABLE

6' Mains Total Allowable Cross Member Length (ft)										
		Main Height								
		4"	6"	8"	10"	12"	14"	16"	18"	20"
Cross Member Height	4"	98	95	92	89	86	83	80	77	74
	6"	---	64	61	60	58	55	53	52	50
	8"	---	---	46	45	43	42	40	39	37
	10"	---	---	---	36	34	33	32	31	30
	12"	---	---	---	---	29	28	27	26	25
	14"	---	---	---	---	---	24	23	22	21
	16"	---	---	---	---	---	---	20	19	18
	18"	---	---	---	---	---	---	---	17	16
	20"	---	---	---	---	---	---	---	---	15

10.6 4' MAIN TABLE

4' Mains Total Allowable Cross Member Length (ft)										
		Main Height								
		4"	6"	8"	10"	12"	14"	16"	18"	20"
Cross Member Height	4"	100	98	96	94	92	90	88	86	84
	6"	---	66	64	63	61	60	59	58	56
	8"	---	---	48	47	46	45	44	43	42
	10"	---	---	---	38	37	36	35	34	33
	12"	---	---	---	---	31	30	29	29	28
	14"	---	---	---	---	---	26	25	25	24
	16"	---	---	---	---	---	---	22	22	21
	18"	---	---	---	---	---	---	---	19	19
	20"	---	---	---	---	---	---	---	---	17