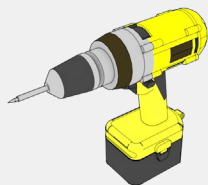


# Installation Instructions

## Required Tools / Hardware

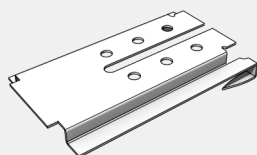


DRILL/DRIVER

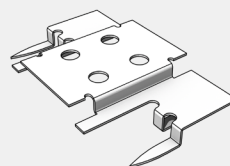


CLIP SCREWS

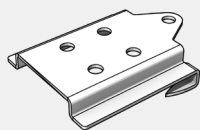
## Supplied Hardware



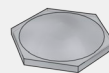
STARTER CLIPS



BAYONET CLIPS



FINISHING CLIPS



SPACER



## Before Beginning Installation...

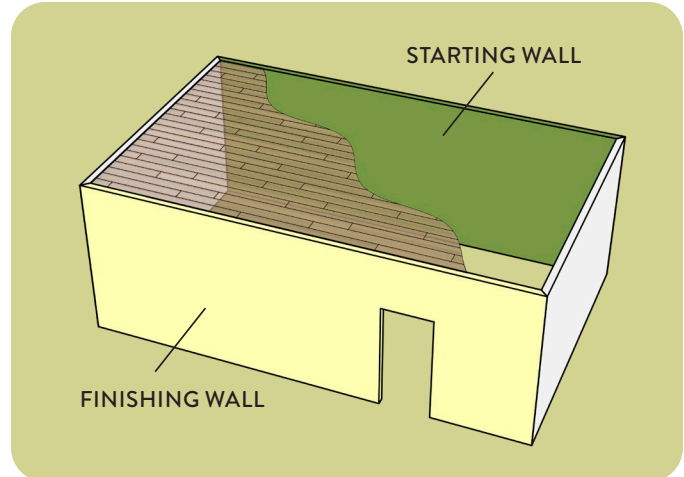
*Open and inspect all packages to ensure all parts listed are included and undamaged.*

## Installation Preparation

1

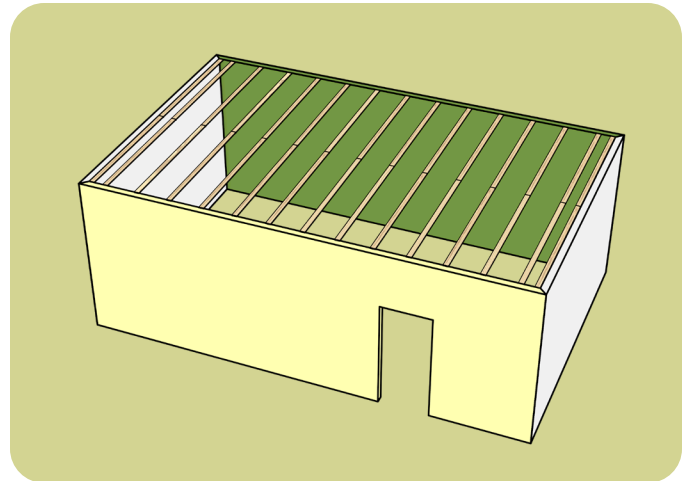
Identify the direction in which the ceiling planks need to be installed. Then identify the starting and finishing walls, which must run parallel to the direction of the ceiling planks.

*Although planks can be mounted directly to studs, joists, or plywood, furring strips are recommended to achieve uniform level plank installation. Locate and mark stud/joists with a pencil or chalk lines.*



2

Install furring strips at both ends of the starting wall, within 6" from the corner. Furring strips should be spaced a maximum of 24" apart from each other.

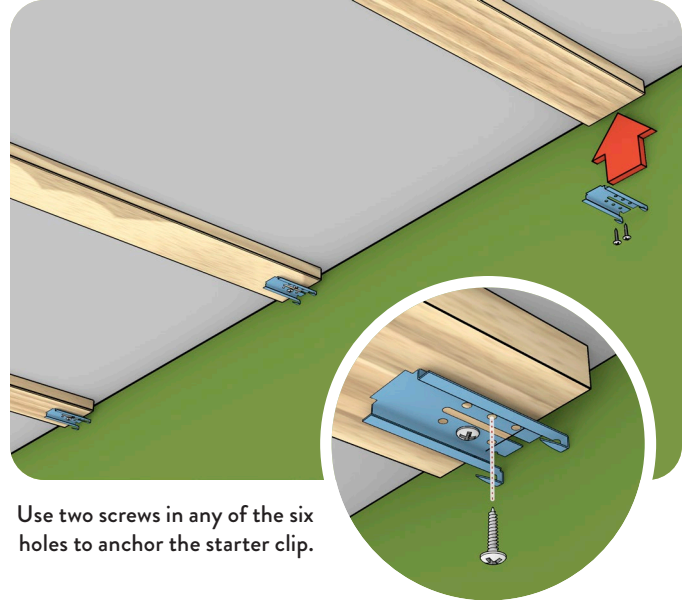


## Install Starter Clip

3

Install starter clips along the starting wall using the furring strips or studs/joists as placement guides.

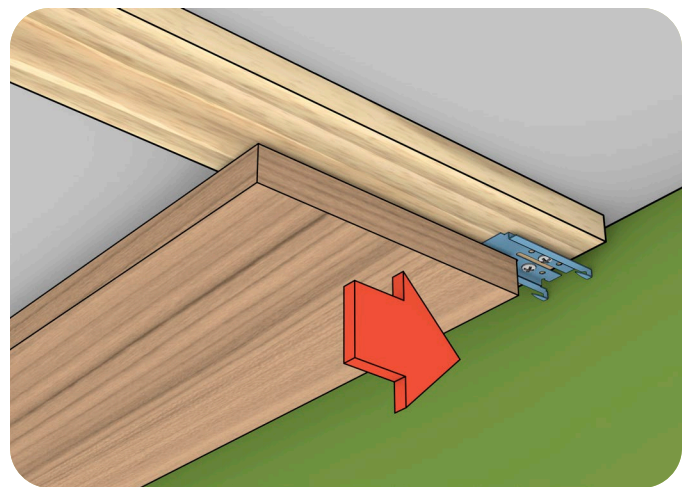
*To ensure straight starting row of planks, use a laser level or string line when installing the Starter Clips.*



## Engage First Plank

4

Press the plank tight against the bottom of the starter clip and slide the plank into the clip's prongs. Ensure the plank is fully seated against the back of prongs.



## Install First Row of Clips

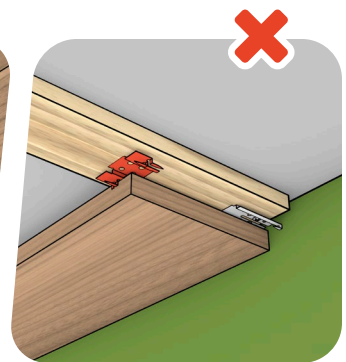
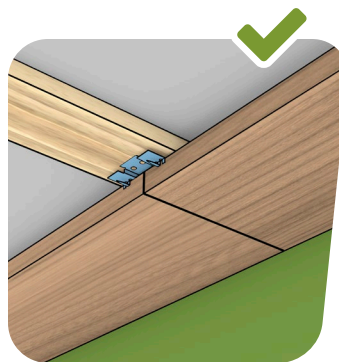
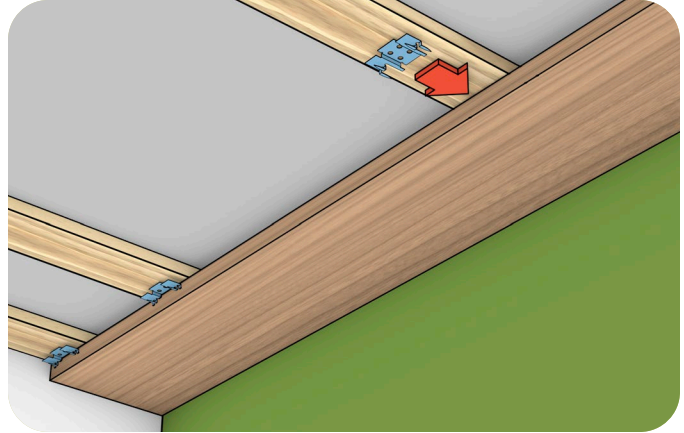
5

With the plank engaged into the starter clip, insert bayonet clips along the exposed edge of the plank using the furring strips as placement guides.

*In many instances, measuring the installation locations and attaching the bayonet clips on the plank's exposed edge **before** installing is an easier and faster process.*



**Do not install a Bayonet Clip at the end of a plank until the adjacent plank has been installed.**

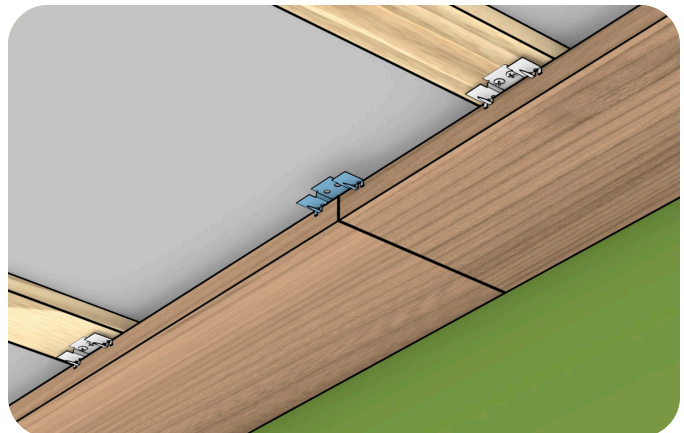


6

When using random plank lengths, the ends of the planks may fall between furring strips. When this occurs, the end of the adjacent planks should be bridged with bayonet clips on each side.

*Bridging bayonet clips do not need to be anchored to a furring strip, since they use neighboring planks for stabilization.*

*For plank joints occurring on the first and last rows, starting/finishing clips can be used on the sides adjacent to the wall.*



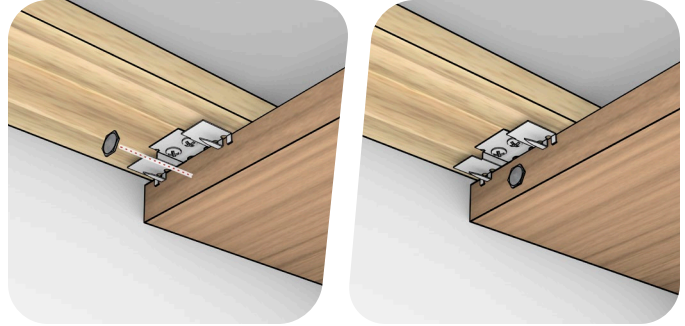


## Install Reveal Spacers

7

Apply reveal spacers within 2" of each end of the plank for each subsequent row.

*In most instances, it is easier to apply the reveal spacers before installing the plank.*

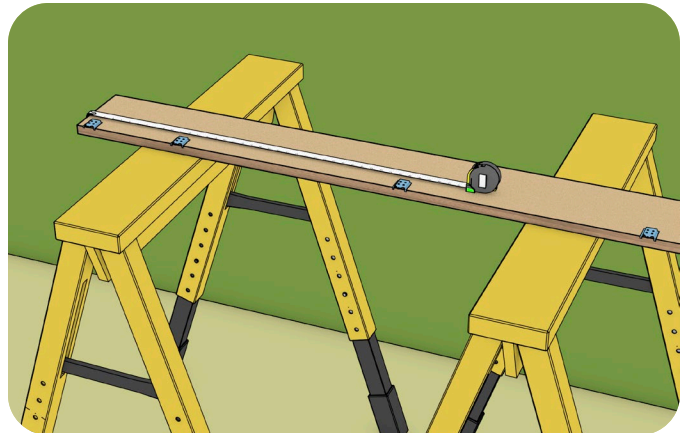


## Final Row Installation

8

Rip the final row of planks to a width allowing for a 1/4" reveal to ensure clearance for the finishing clip.

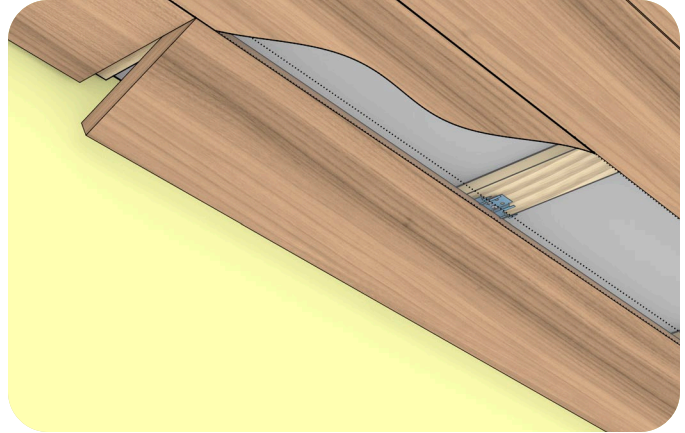
Prior to installation, attach the finishing clip to each plank in locations that correspond to the furring strips.



## Final Row Installation (cont.)

9

Lift the opposite edge of the plank against the base of the bayonet clip and securely seat plank into the prongs.



10

Using an extension drill bit, secure one screw through the exposed hole of each finishing clip.

